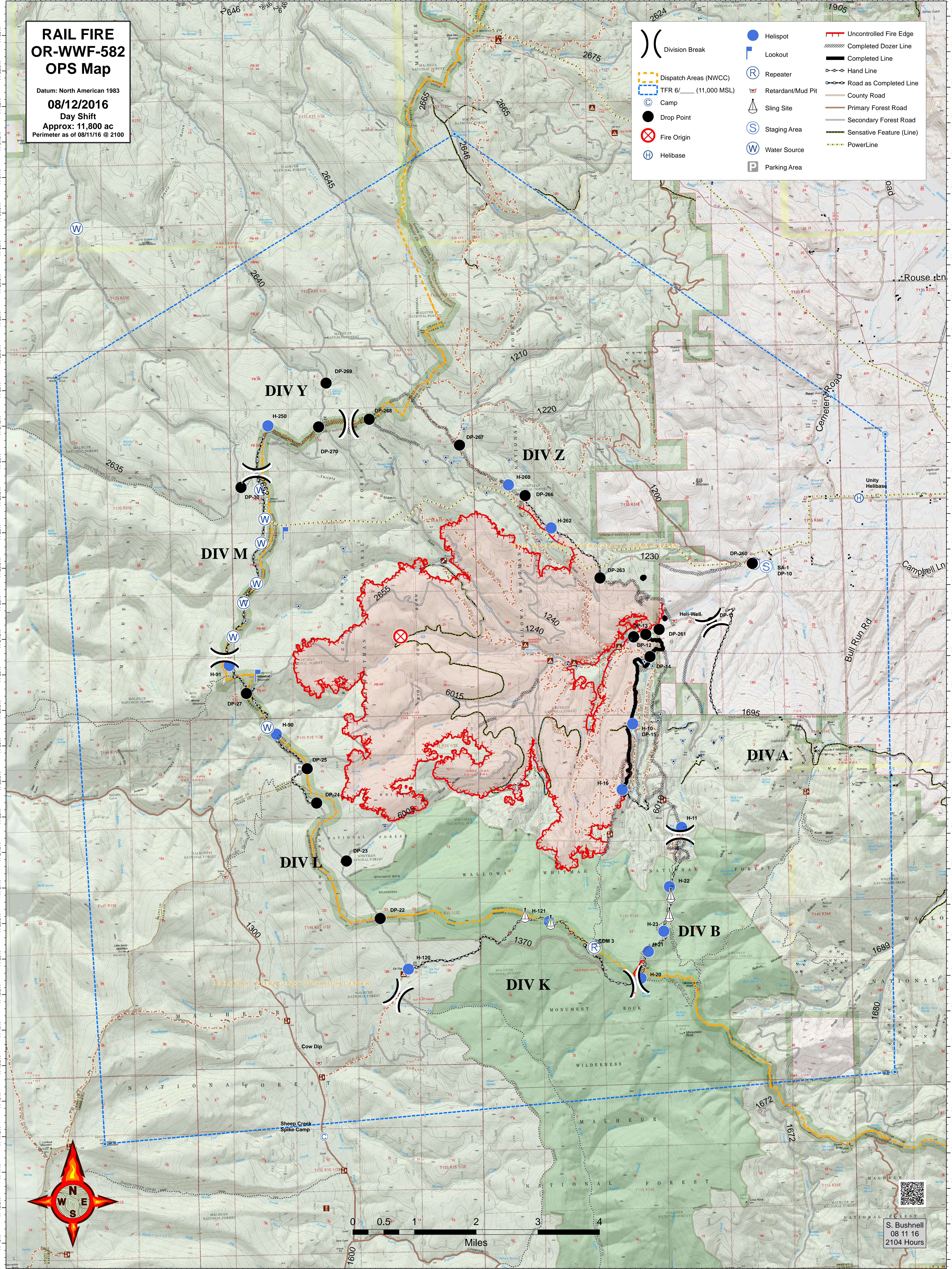


# RAIL FIRE OR-WWF-582 OPS Map

Datum: North American 1983  
08/12/2016  
Day Shift  
Approx: 11,800 ac  
Perimeter as of 08/11/16 @ 2100

	Division Break		Helispot		Uncontrolled Fire Edge
	Dispatch Areas (NWCC)		Lookout		Completed Dozer Line
	TFR 6/ (11,000 MSL)		Repeater		Completed Line
	Camp		Retardant/Mud Pit		Hand Line
	Drop Point		Sling Site		Road as Completed Line
	Fire Origin		Staging Area		Primary Forest Road
	Helibase		Water Source		Secondary Forest Road
			Parking Area		Sensitive Feature (Line)
					PowerLine



S. Bushnell  
08 11 16  
2104 Hours