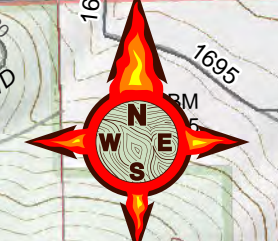
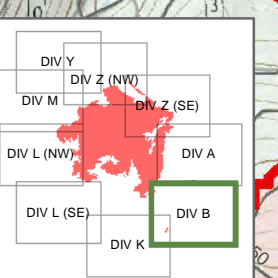


**RAIL FIRE
OR-WWF-582
OPS Map
DIV B**
Drawn: North American 1983
08/12/2016
Day Shift
Approx: 11,800 ac
Perimeter as of 08/11/16 @ 2100



- Division Break
- Helispot
- Lookout
- Repeater
- Sling Site
- Structures
- Sensitive Feature (Line)
- Uncontrolled Fire Edge
- Completed Dozer Line
- Completed Line
- Hand Line
- Road as Completed Line



S. Bushnell
08 11 16
2056 Hours