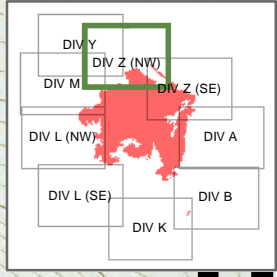


**RAIL FIRE
OR-WWF-582
OPS Map
DIV Z (NW)**
Drawn: North American 1983
08/12/2016
Day Shift
Approx: 11,800 ac
Perimeter as of 08/11/16 @ 2100



- Division Break
- Helispot
- Sensitive Feature (Point)
- Lookout
- Sensitive Feature (Line)
- Water Source
- Power Line
- Uncontrolled Fire Edge
- Structures
- Completed Dozer Line
- Completed Line
- Road as Completed Line



S. Bushnell
08/11/16
2057 Hours
DP-13