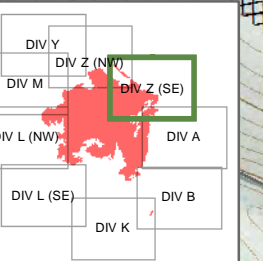
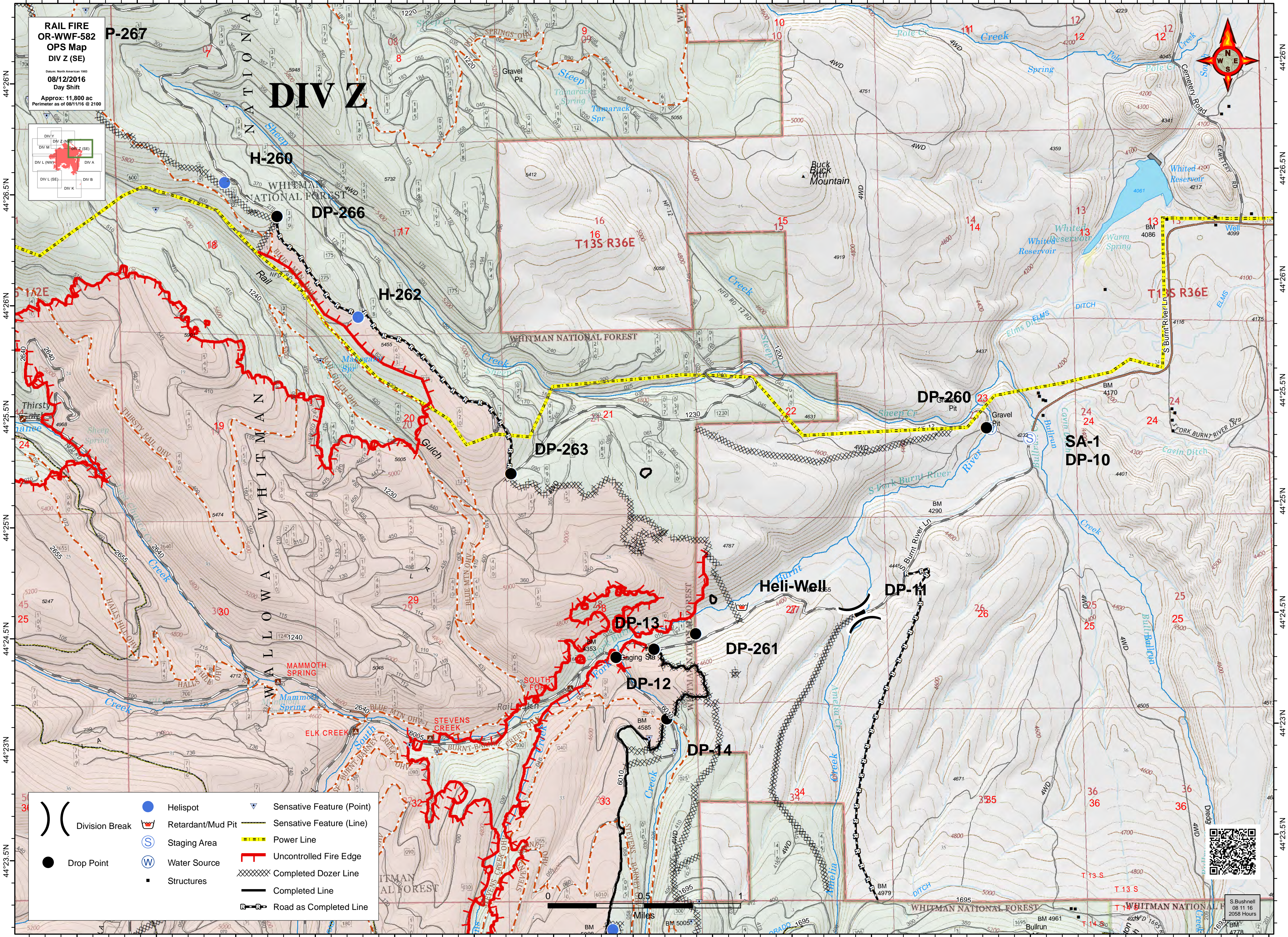


118°21.5'W 118°21'W 118°20.5'W 118°20'W 118°19.5'W 118°19'W 118°18.5'W 118°18'W 118°17.5'W 118°17'W 118°16.5'W 118°16'W 118°15.5'W 118°15'W 118°14.5'W 118°14'W

**RAIL FIRE  
OR-WWF-582  
OPS Map  
DIV Z (SE)**  
Date: North American 1983  
**08/12/2016**  
Day Shift  
Approx: 11,800 ac  
Perimeter as of 08/11/16 @ 2100



# DIV Z



- Division Break
- Helispot
- Retardant/Mud Pit
- Sensitive Feature (Point)
- Staging Area
- Water Source
- Sensitive Feature (Line)
- Drop Point
- Structures
- Power Line
- Uncontrolled Fire Edge
- Completed Dozer Line
- Completed Line
- Road as Completed Line



S. Bushnell  
08/11/16  
2058 Hours

118°21.5'W 118°21'W 118°20.5'W 118°20'W 118°19.5'W 118°19'W 118°18.5'W 118°18'W 118°17.5'W 118°17'W 118°16.5'W 118°16'W 118°15.5'W 118°15'W 118°14.5'W 118°14'W