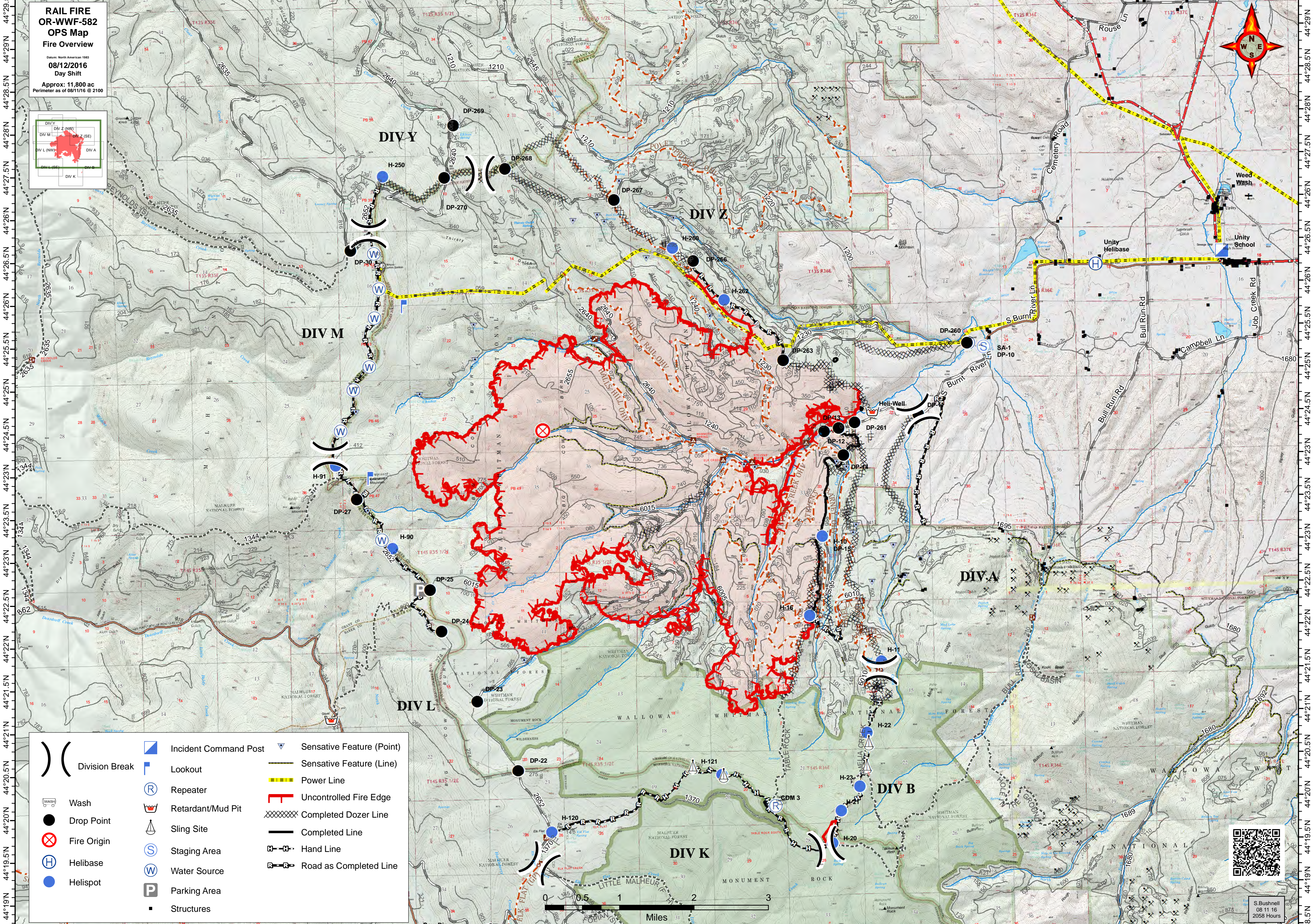
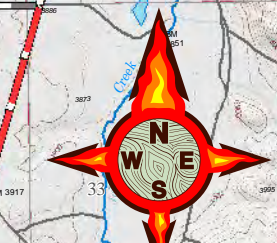
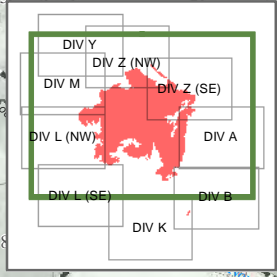
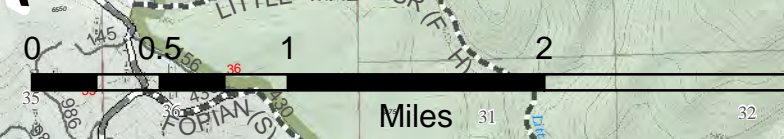


118°30.5'W 118°29.5'W 118°28.5'W 118°27.5'W 118°26.5'W 118°25.5'W 118°24.5'W 118°23.5'W 118°22.5'W 118°21.5'W 118°20.5'W 118°19.5'W 118°18.5'W 118°17.5'W 118°16.5'W 118°15.5'W 118°14.5'W 118°13.5'W 118°12.5'W 118°11.5'W 118°10.5'W

**RAIL FIRE
OR-WWF-582
OPS Map
Fire Overview**
Drawn: North American 1983
08/12/2016
Day Shift
Approx: 11,800 ac
Perimeter as of 08/11/16 @ 2100



	Division Break		Incident Command Post		Sensitive Feature (Point)
	Lookout		Repeater		Sensitive Feature (Line)
	Wash		Retardant/Mud Pit		Power Line
	Drop Point		Sling Site		Uncontrolled Fire Edge
	Fire Origin		Staging Area		Completed Dozer Line
	Helibase		Water Source		Completed Line
	Helispot		Parking Area		Hand Line
			Structures		Road as Completed Line



S. Bushnell
08/11/16
2058 Hours

118°31'W 118°30'W 118°29'W 118°28'W 118°26'W 118°26'W 118°23'W 118°23'W 118°22'W 118°21'W 118°20'W 118°19'W 118°18'W 118°17'W 118°16'W 118°15'W 118°14'W 118°13'W 118°11'W 118°11'W