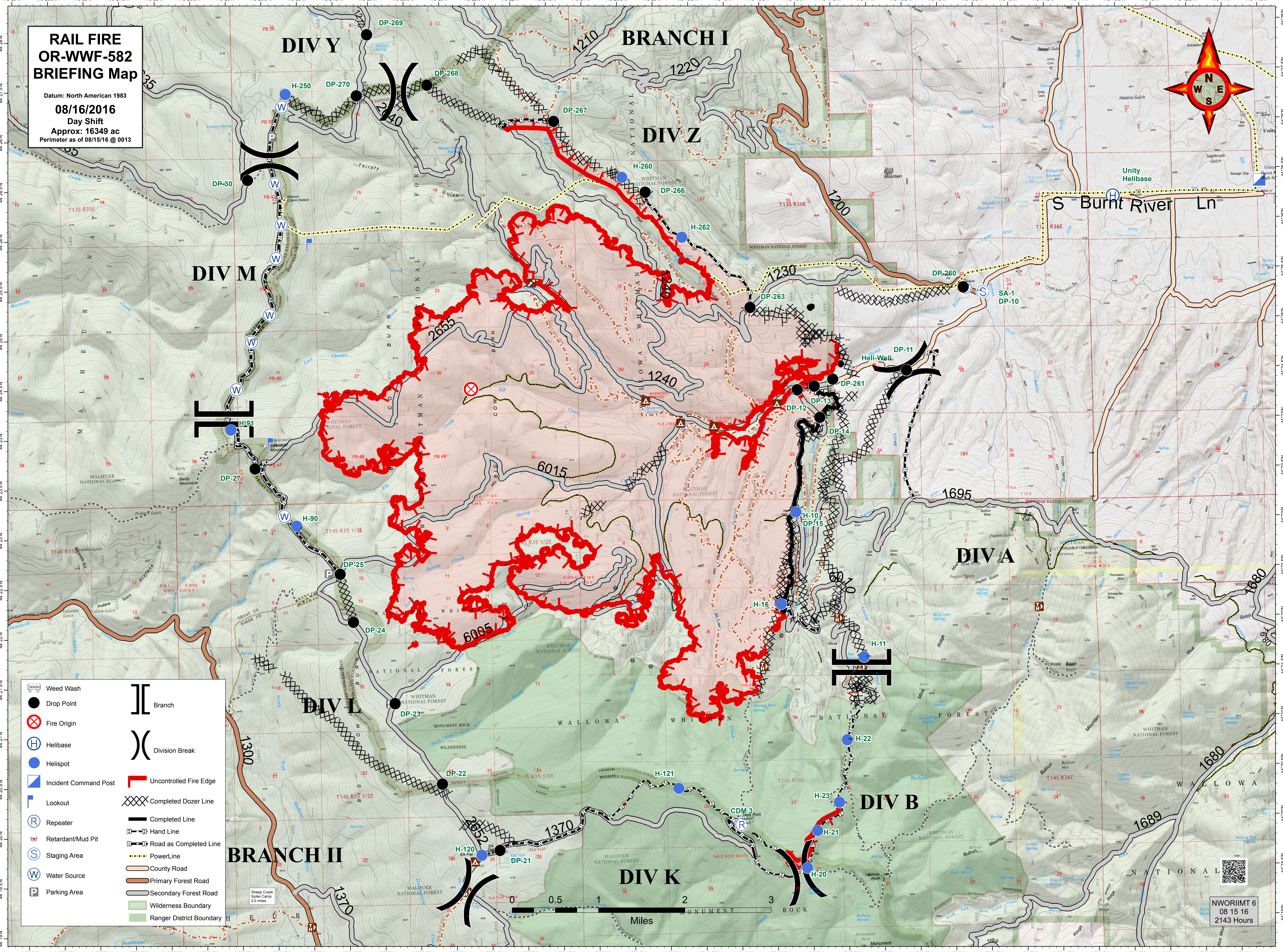


RAIL FIRE OR-WWF-582 BRIEFING Map

Datum: North American 1983
08/16/2016
 Day Shift
 Approx: 16349 ac
 Perimeter as of 08/15/16 @ 0013



- | | |
|-----------------------|--------------------------|
| Wash | Branch |
| Drop Point | Division Break |
| Fire Origin | Uncontrolled Fire Edge |
| Helibase | Completed Dozer Line |
| Helispot | Completed Line |
| Incident Command Post | Hand Line |
| Lookout | Road as Completed Line |
| Repeater | PowerLine |
| Retardant/Mud Pit | County Road |
| Staging Area | Primary Forest Road |
| Water Source | Secondary Forest Road |
| Parking Area | Wilderness Boundary |
| | Ranger District Boundary |



NWORIMT 6
 08 15 16
 2143 Hours