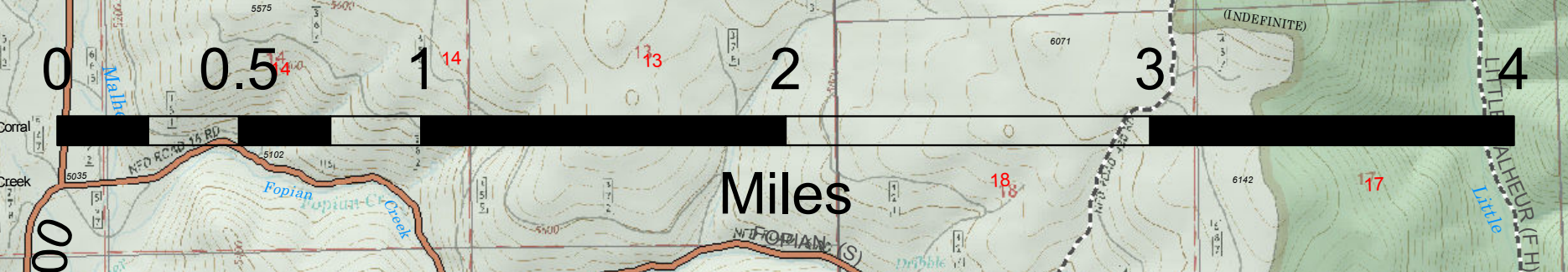
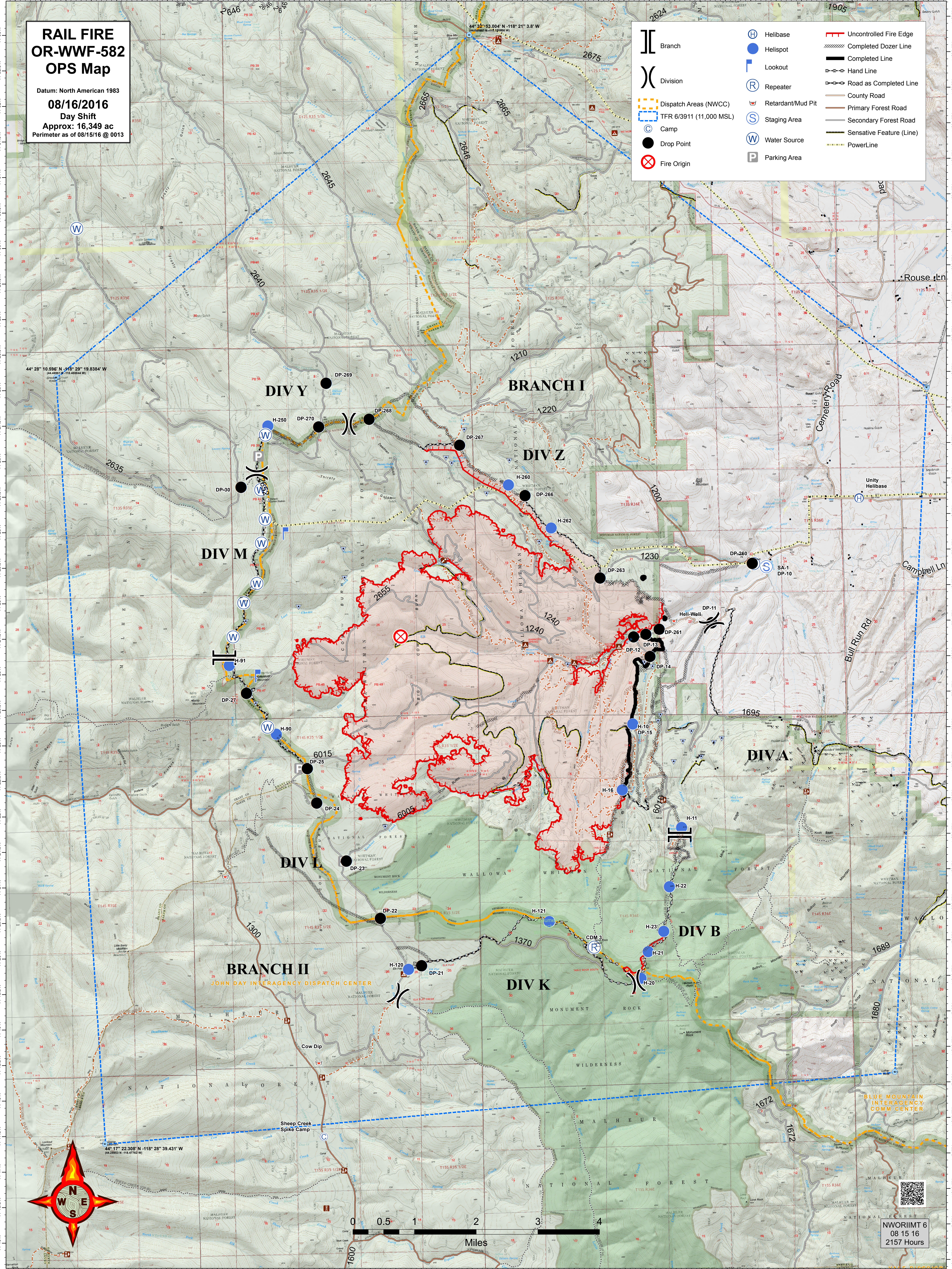


# RAIL FIRE OR-WWF-582 OPS Map

Datum: North American 1983  
**08/16/2016**  
Day Shift  
Approx: 16,349 ac  
Perimeter as of 08/15/16 @ 0013

	Branch		Helibase		Uncontrolled Fire Edge
	Division		Helispot		Completed Dozer Line
	Dispatch Areas (NWCC)		Lookout		Completed Line
	TFR 6/3911 (11,000 MSL)		Repeater		Hand Line
	Camp		Retardant/Mud Pit		Road as Completed Line
	Drop Point		Staging Area		Primary Forest Road
	Fire Origin		Water Source		Secondary Forest Road
			Parking Area		Sensitive Feature (Line)
					PowerLine



NWORIMT 6  
08 15 16  
2157 Hours