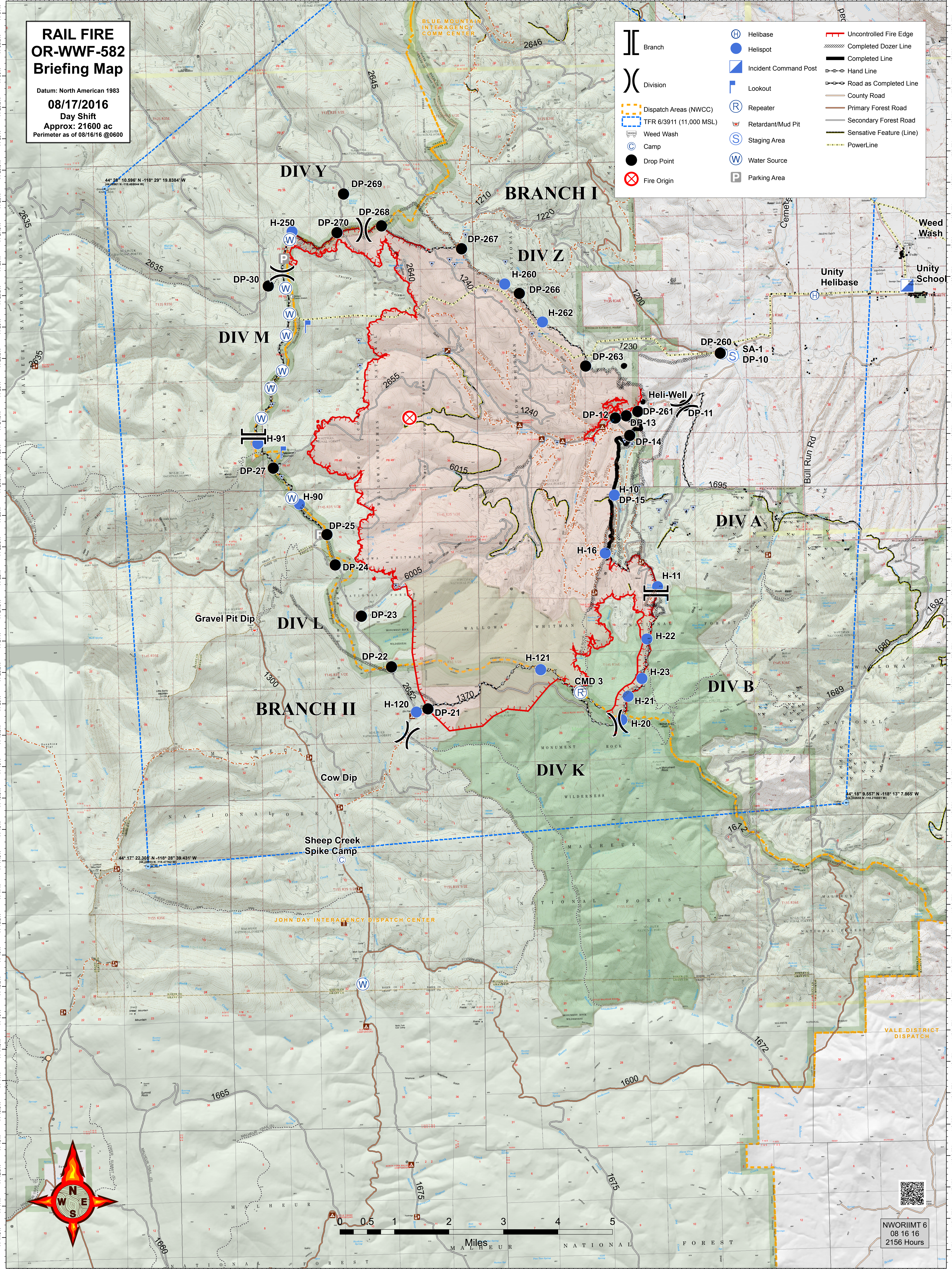


# RAIL FIRE OR-WWF-582 Briefing Map

Datum: North American 1983  
**08/17/2016**  
Day Shift  
Approx: 21600 ac  
Perimeter as of 08/16/16 @0600

	Branch		Helibase		Uncontrolled Fire Edge
	Division		Helispot		Completed Dozer Line
	Dispatch Areas (NWCC)		Incident Command Post		Completed Line
	TFR 6/3911 (11,000 MSL)		Lookout		Hand Line
	Weed Wash		Repeater		Road as Completed Line
	Camp		Retardant/Mud Pit		Primary Forest Road
	Drop Point		Staging Area		Secondary Forest Road
	Fire Origin		Water Source		Sensitive Feature (Line)
			Parking Area		PowerLine



NWORIMT 6  
08 16 16  
2156 Hours