

RAIL FIRE OR-WWF-582

AIROPS Map

08/17/2016 Day Shift
 Perimeter as of: 08/17/2016 @ 0600
 Approx: 21,600 ac

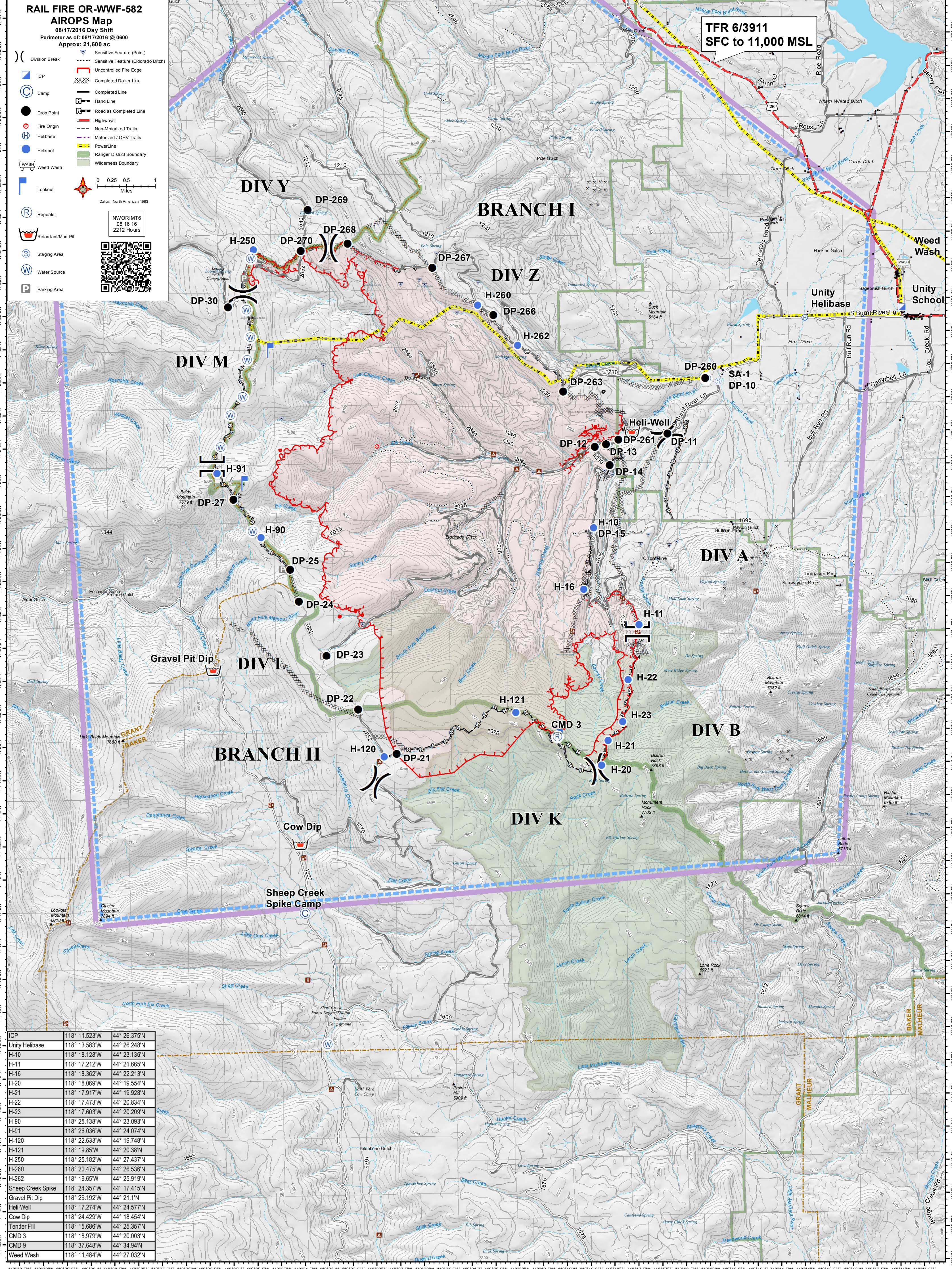
- () Division Break
- ICP
- Camp
- Drop Point
- Fire Origin
- Helibase
- Helispot
- WASH Weed Wash
- Lookout
- Repeater
- Retardant/Mud Pit
- Staging Area
- Water Source
- Parking Area
- Sensitive Feature (Point)
- Sensitive Feature (Eldorado Ditch)
- Uncontrolled Fire Edge
- Completed Dozer Line
- Completed Line
- Hand Line
- Road as Completed Line
- Highways
- Non-Motorized Trails
- Motorized / OHV Trails
- PowerLine
- Ranger District Boundary
- Wilderness Boundary

0 0.25 0.5 1
Miles

Datum: North American 1983

NWORIMT6
08 16 16
2212 Hours

TFR 6/3911
SFC to 11,000 MSL



ICP	118° 11.523'W	44° 26.375'N
Unity Helibase	118° 13.583'W	44° 26.248'N
H-10	118° 18.128'W	44° 23.138'N
H-11	118° 17.212'W	44° 21.665'N
H-16	118° 18.362'W	44° 22.213'N
H-20	118° 18.069'W	44° 19.554'N
H-21	118° 17.917'W	44° 19.928'N
H-22	118° 17.473'W	44° 20.834'N
H-23	118° 17.603'W	44° 20.209'N
H-90	118° 25.138'W	44° 23.093'N
H-91	118° 26.036'W	44° 24.074'N
H-120	118° 22.633'W	44° 19.748'N
H-121	118° 19.85'W	44° 20.38'N
H-250	118° 25.182'W	44° 27.437'N
H-260	118° 20.475'W	44° 26.536'N
H-262	118° 19.65'W	44° 25.919'N
Sheep Creek Spike	118° 24.357'W	44° 17.415'N
Gravel Pit Dip	118° 26.192'W	44° 21.1'N
Heli-Well	118° 17.274'W	44° 24.577'N
Cow Dip	118° 24.429'W	44° 18.454'N
Tender Fill	118° 15.686'W	44° 25.357'N
CMD 3	118° 18.979'W	44° 20.003'N
CMD 9	118° 37.648'W	44° 34.94'N
Weed Wash	118° 11.484'W	44° 27.032'N