

RAIL FIRE OR-WWF-582 IAP Map 3

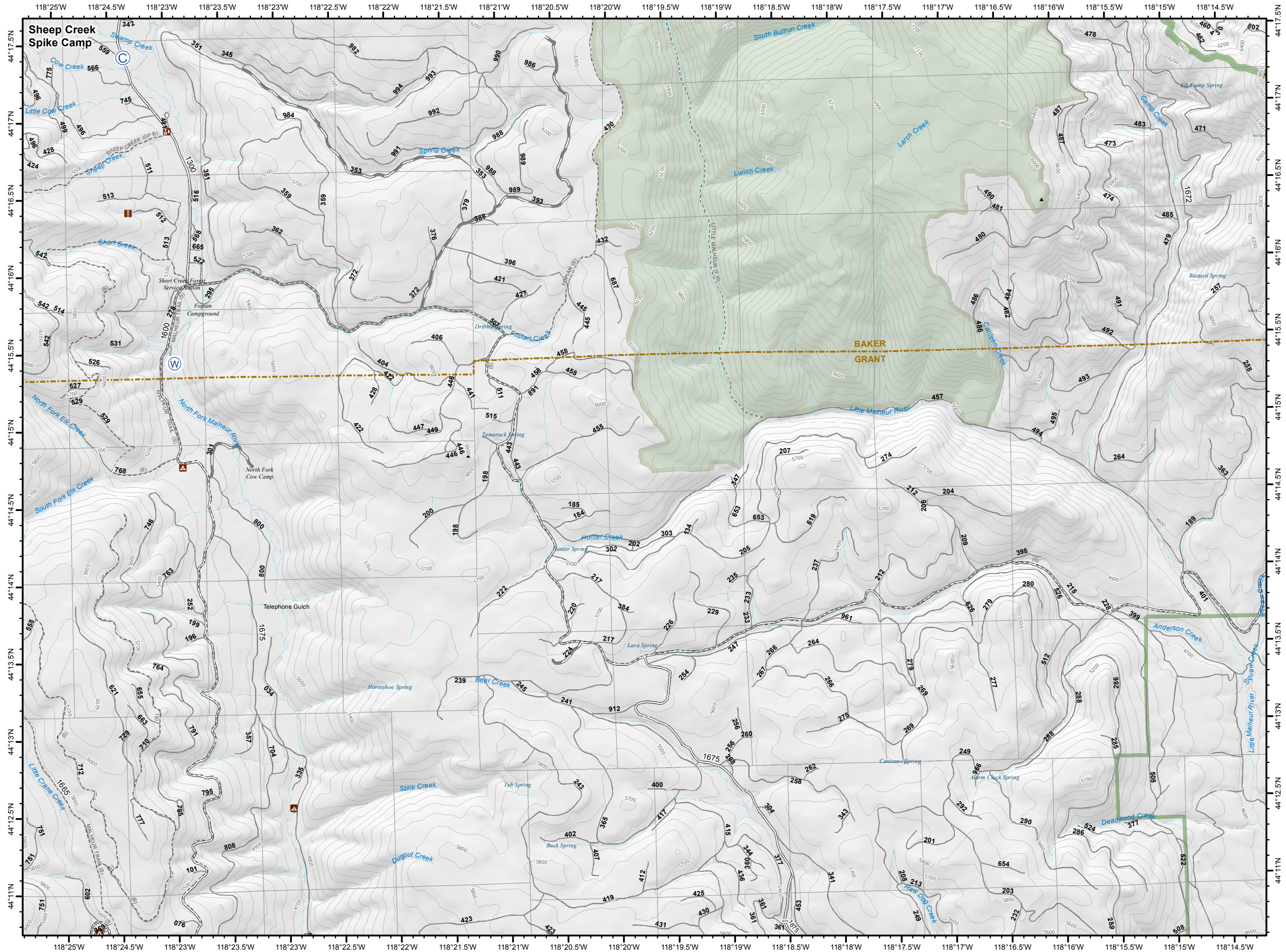
08/17/2016 Day Shift
Perimeter as of: 08/16/2016 @ 0600
Approx: 21300 ac

- Division Break
- Camp
- Water Source
- Paved Road
- Gravel Road
- Natural / Unknown Road
- Non-Motorized Trails
- Motorized / OHV Trails
- Ranger District Boundary
- Wilderness Boundary



0 0.25 0.5 1
Miles

Datum: North American 1983



RAIL FIRE OR-WWF-582 IAP Map 1

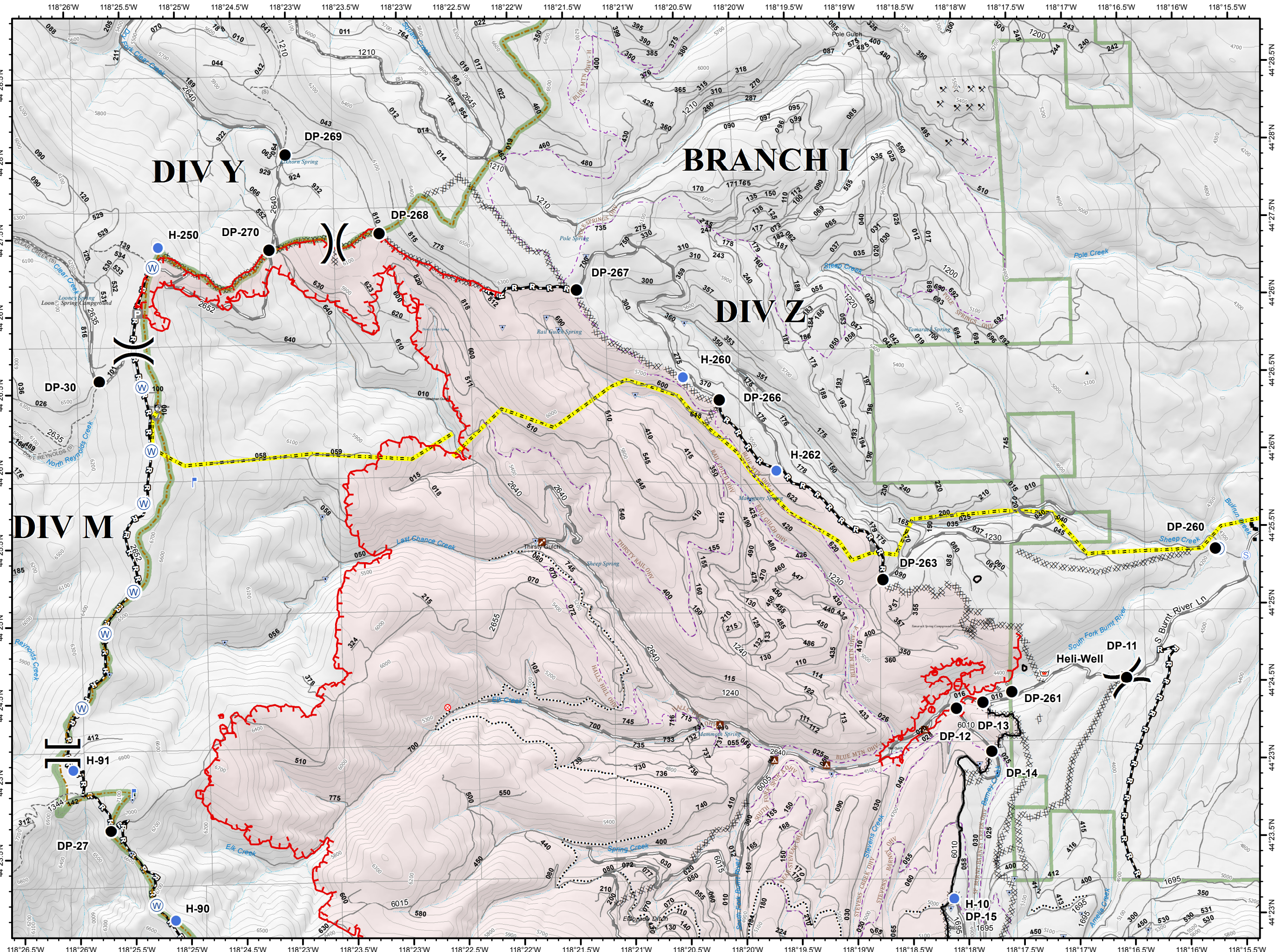
08/17/2016 Day Shift
Perimeter as of: 08/16/2016 @ 0600
Approx: 21300 ac

- () Division Break
- Drop Point
- ⊙ Fire Origin
- Helispot
- ⌵ Lookout
- 🛑 Retardant/Mud Pit
- Ⓢ Staging Area
- Ⓜ Water Source
- P Parking Area
- 📡 Microwave Station
- ⚠ Sensitive Feature (Point)
- ⋯ Sensitive Feature (Eldorado Ditch)
- 🔴 Uncontrolled Fire Edge
- XXXXX Completed Dozer Line
- Completed Line
- Road as Completed Line
- Paved Road
- Gravel Road
- Natural / Unknown Road
- - - Non-Motorized Trails
- - - Motorized / OHV Trails
- ⚡ PowerLine
- 🟩 Ranger District Boundary



0 0.25 0.5 1
Miles

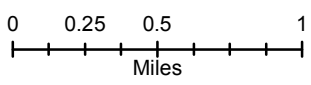
Datum: North American 1983



RAIL FIRE OR-WWF-582 IAP Map 2

08/17/2016 Day Shift
Perimeter as of: 08/16/2016 @ 0600
Approx: 21300 ac

- () Division Break
- (C) Camp
- (●) Drop Point
- (●) Helispot
- (L) Lookout
- (R) Repeater
- (M) Retardant/Mud Pit
- (W) Water Source
- (P) Parking Area
- (T) Lookout Tower
- (▲) Sensitive Feature (Point)
- (.....) Sensitive Feature (Eldorado Ditch)
- (=) Uncontrolled Fire Edge
- (XXXXX) Completed Dozer Line
- (—) Completed Line
- (H-H) Hand Line
- (R-R) Road as Completed Line
- (—) Paved Road
- (—) Gravel Road
- (—) Natural / Unknown Road
- (- - -) Non-Motorized Trails
- (- - -) Motorized / OHV Trails
- (—) Ranger District Boundary
- (—) Wilderness Boundary



Datum: North American 1983

