

RAIL FIRE OR-WWF-582

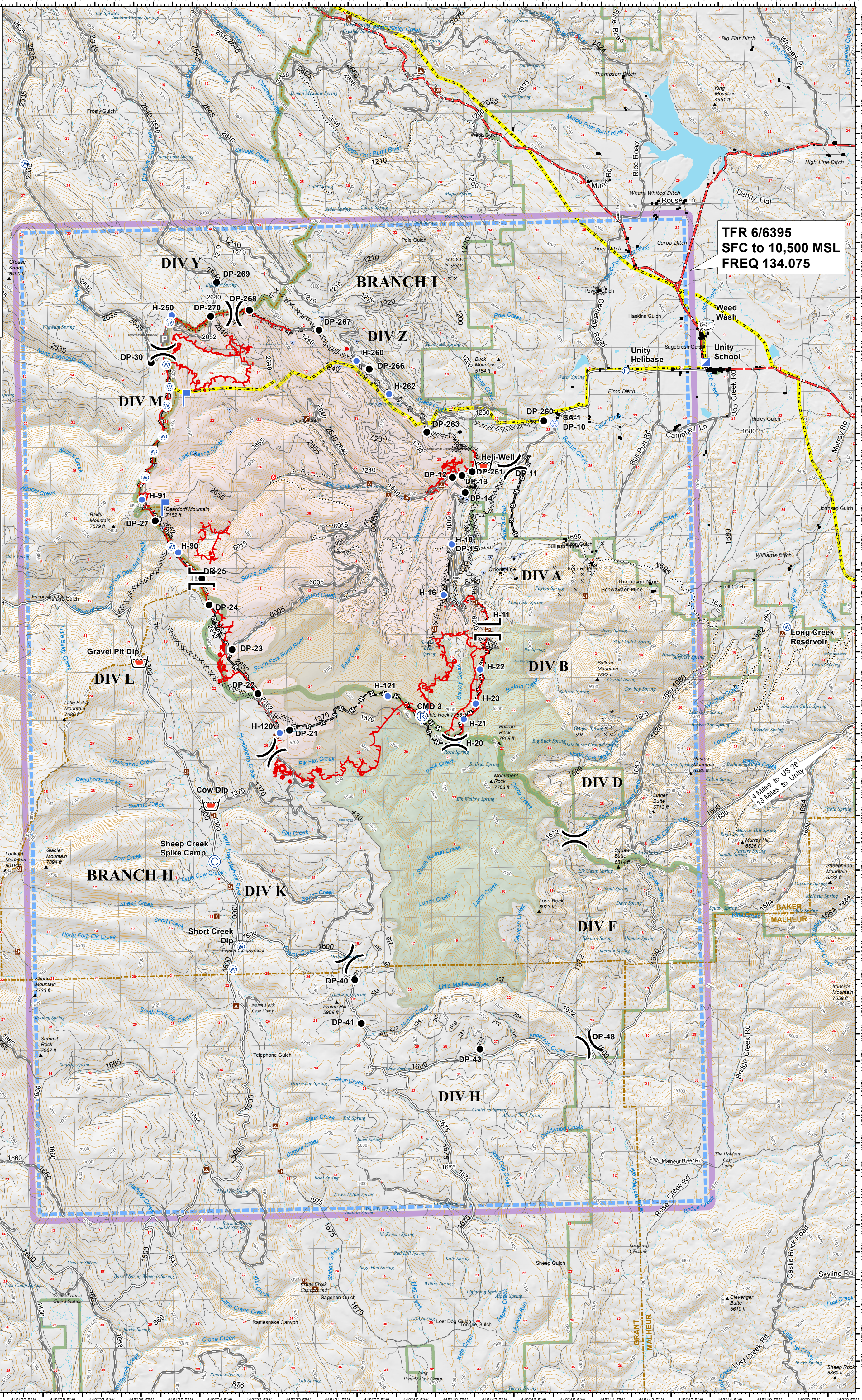
AIROPS Map

08/19/2016 Day Shift
Perimeter as of: 08/17/2016 @ 2044
Approx: 28,209 ac

Datum: North American 1983

NWORIMT6
08 18 16
2136 Hours

| | | |
|----------------------|---------------|--------------|
| ICP | 118° 11.523'W | 44° 26.375'N |
| Unity Helibase | 118° 13.583'W | 44° 26.248'N |
| H-10 | 118° 18.128'W | 44° 23.136'N |
| H-11 | 118° 17.212'W | 44° 21.665'N |
| H-16 | 118° 18.362'W | 44° 22.213'N |
| H-20 | 118° 18.069'W | 44° 19.554'N |
| H-21 | 118° 17.917'W | 44° 19.928'N |
| H-22 | 118° 17.473'W | 44° 20.834'N |
| H-23 | 118° 17.603'W | 44° 20.209'N |
| H-90 | 118° 25.138'W | 44° 23.093'N |
| H-91 | 118° 26.036'W | 44° 24.074'N |
| H-120 | 118° 22.633'W | 44° 19.748'N |
| H-121 | 118° 19.85'W | 44° 20.38'N |
| H-250 | 118° 25.182'W | 44° 27.437'N |
| H-260 | 118° 20.475'W | 44° 26.536'N |
| H-262 | 118° 19.95'W | 44° 25.919'N |
| Sheep Creek Spike | 118° 24.357'W | 44° 17.415'N |
| Gravel Pit Dip | 118° 26.192'W | 44° 21.1'N |
| Helix-Well | 118° 17.274'W | 44° 24.577'N |
| Cow Dip | 118° 24.429'W | 44° 18.454'N |
| Tender Fill | 118° 15.686'W | 44° 25.357'N |
| CMD 3 | 118° 18.979'W | 44° 20.003'N |
| CMD 9 | 118° 37.648'W | 44° 34.94'N |
| Weed Wash | 118° 11.484'W | 44° 27.032'N |
| Long Creek Reservoir | 118° 9.597'W | 44° 21.486'N |
| Short Creek Dip | 118° 23.737'W | 44° 15.844'N |



TFR 6/6395
SFC to 10,500 MSL
FREQ 134.075

4 Miles to US 26
13 Miles to Unity