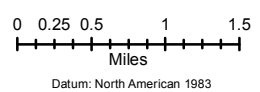


RAIL FIRE OR-WWF-582
AIROPS Map
 08/26/2016 Day Shift
 Perimeter as of: 08/24/2016 @ 2215
 Approx: 32,840 acres

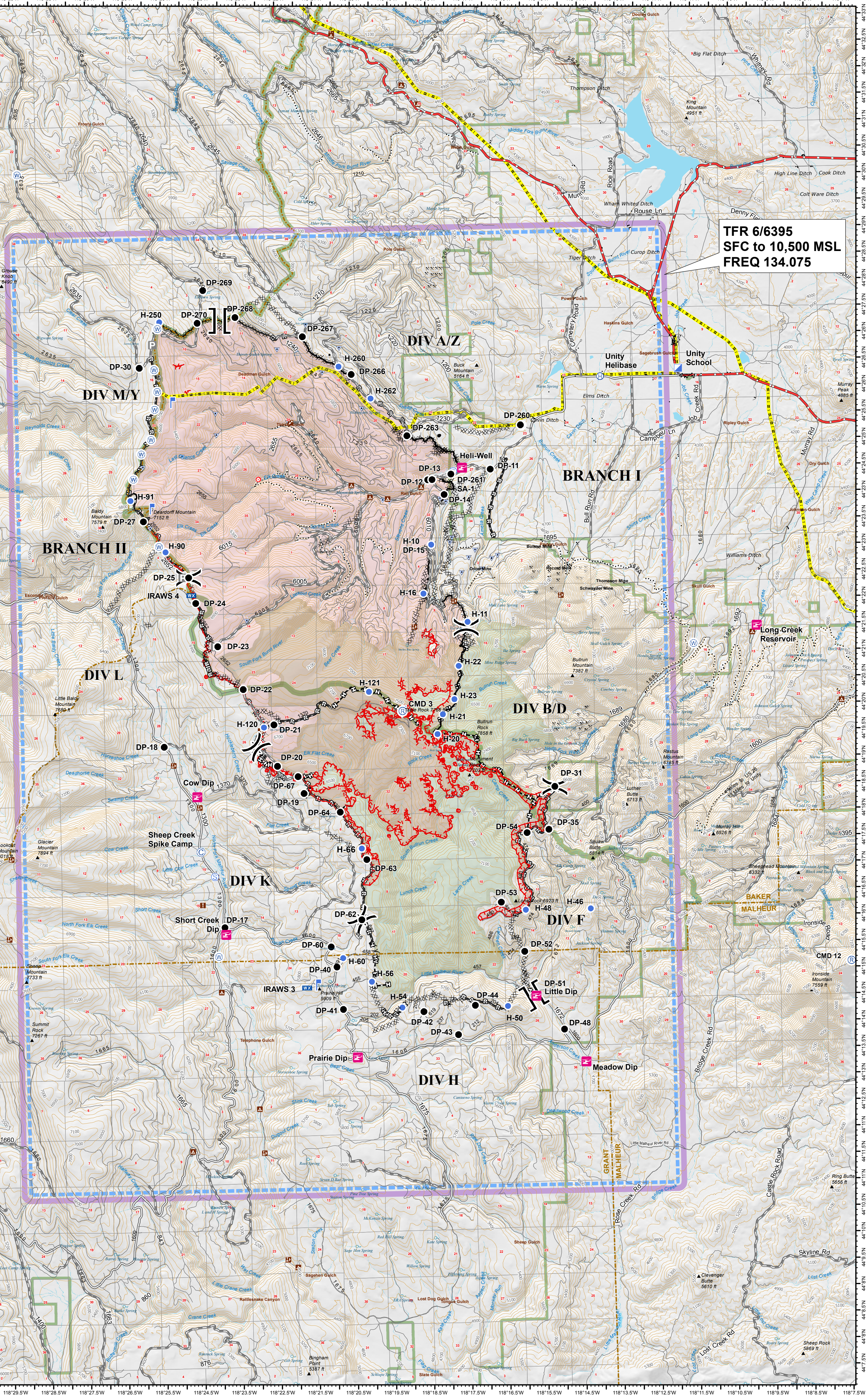
- () Division Break
- ICP
- Camp
- Drop Point
- Fire Origin
- Helibase
- Helispot
- Lookout
- WX Mobile Weather Unit
- Repeater
- Staging Area
- Water Source
- Parking Area
- Sensitive Feature (Point)
- Sensitive Feature (Eldorado Ditch)
- Uncontrolled Fire Edge
- Completed Dozer Line
- Completed Line
- Hand Line
- Road as Completed Line
- Ridge / Geographic Feature
- Highways
- Non-Motorized Trails
- Motorized / OHV Trails
- Power Line
- Ranger District Boundary
- Wilderness Boundary



Datum: North American 1983
 NWORIMT6
 08 25 16
 2143 Hours



ICP	118° 11.523'W	44° 26.375'N
Unity Helibase	118° 13.583'W	44° 26.248'N
H-10	118° 18.128'W	44° 23.138'N
H-11	118° 17.212'W	44° 21.665'N
H-16	118° 18.362'W	44° 22.213'N
H-20	118° 18.069'W	44° 19.554'N
H-21	118° 17.917'W	44° 19.928'N
H-22	118° 17.473'W	44° 20.834'N
H-23	118° 17.603'W	44° 20.209'N
H-46	118° 14.133'W	44° 16.20'N
H-48	118° 16.837'W	44° 16.20'N
H-50	118° 16.367'W	44° 14.933'N
H-54	118° 18.143'W	44° 14.407'N
H-56	118° 19.932'W	44° 14.905'N
H-60	118° 20.677'W	44° 15.36'N
H-66	118° 20.122'W	44° 17.425'N
H-90	118° 25.138'W	44° 23.093'N
H-91	118° 26.036'W	44° 24.074'N
H-120	118° 22.633'W	44° 19.748'N
H-121	118° 19.85'W	44° 20.38'N
H-250	118° 25.182'W	44° 27.437'N
H-260	118° 20.475'W	44° 26.536'N
H-262	118° 19.65'W	44° 25.919'N
Sheep Creek Spike	118° 24.357'W	44° 17.415'N
Heli-Well	118° 17.274'W	44° 24.577'N
Cow Dip	118° 24.429'W	44° 18.454'N
Long Creek Reservoir	118° 9.597'W	44° 21.486'N
Short Creek Dip	118° 23.737'W	44° 15.844'N
Little Dip	118° 15.614'W	44° 14.569'N
Prairie Dip	118° 20.342'W	44° 13.478'N
Meadow Dip	118° 14.338'W	44° 13.121'N
Tender Fill	118° 15.686'W	44° 25.357'N
CMD 3	118° 18.979'W	44° 20.003'N
CMD 9	118° 37.648'W	44° 34.94'N
CMD 12	118° 7.308'W	44° 15.117'N
IRAWS 3	118° 21.599'W	44° 14.807'N
IRAWS 4	118° 24.484'W	44° 22.267'N



TFR 6/6395
SFC to 10,500 MSL
FREQ 134.075