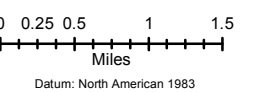


RAIL FIRE OR-WWF-582
AIROPS Map
 09/01/2016 Day Shift
 Perimeter as of: 08/31/2016 @ 0800
 Approx: 40,983 acres

- () Division Break
- ICP
- Camp
- Drop Point
- Fire Origin
- Helibase
- Helispot
- Lookout
- Mobile Weather Unit
- Repeater
- Spot Fire
- Staging Area
- Water Source
- Parking Area
- Helicopter Dip
- FirePoint - black spot
- Sensitive Feature (Point)
- Sensitive Feature (Eldorado Ditch)
- Uncontrolled Fire Edge
- Completed Dozer Line
- Completed Line
- Hand Line
- Road as Completed Line
- Ridge / Geographic Feature
- Highways
- Non-Motorized Trails
- Motorized / OHV Trails
- PowerLine
- CountyLine
- Ranger District Boundary
- Wilderness Boundary

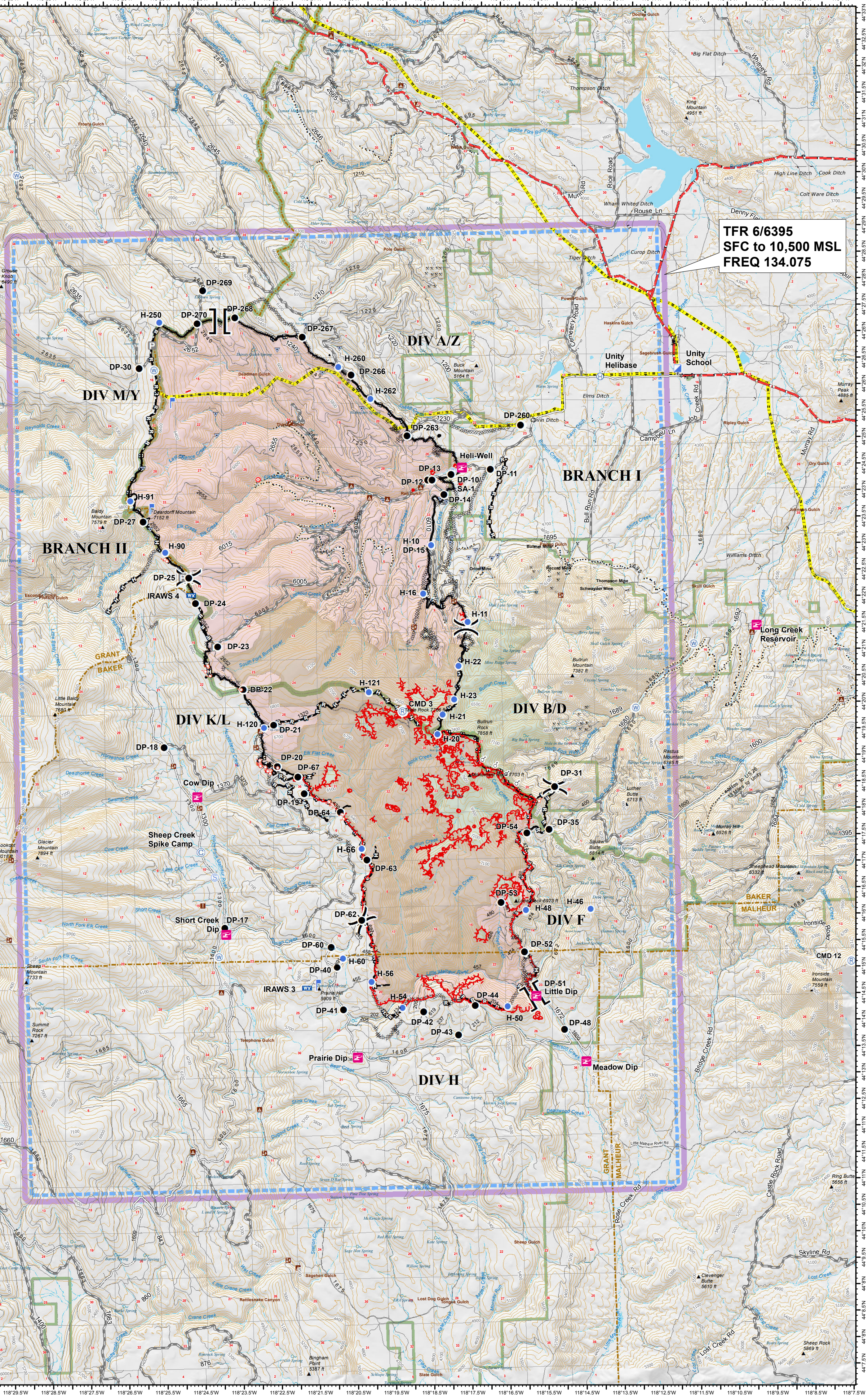


Datum: North American 1983

NWMT13
 08 31 16
 2042 Hours

ICP	118° 11.523'W	44° 26.375'N
Unity Helibase	118° 13.583'W	44° 26.248'N
H-10	118° 18.128'W	44° 23.138'N
H-11	118° 17.212'W	44° 21.665'N
H-16	118° 18.362'W	44° 22.213'N
H-20	118° 18.069'W	44° 19.554'N
H-21	118° 17.917'W	44° 19.928'N
H-22	118° 17.473'W	44° 20.834'N
H-23	118° 17.603'W	44° 20.209'N
H-46	118° 14.133'W	44° 16.20'N
H-48	118° 15.837'W	44° 16.20'N
H-50	118° 16.367'W	44° 14.393'N
H-54	118° 18.143'W	44° 14.407'N
H-56	118° 19.322'W	44° 14.905'N
H-60	118° 20.677'W	44° 15.36'N
H-66	118° 20.122'W	44° 17.425'N
H-90	118° 25.138'W	44° 23.093'N
H-91	118° 26.036'W	44° 24.074'N
H-120	118° 22.633'W	44° 19.748'N
H-121	118° 19.85'W	44° 20.38'N
H-250	118° 25.182'W	44° 27.437'N
H-260	118° 20.475'W	44° 26.536'N
H-262	118° 19.65'W	44° 25.919'N
Sheep Creek Spike	118° 24.357'W	44° 17.415'N
Heli-Well	118° 17.274'W	44° 24.577'N
Cow Dip	118° 24.429'W	44° 18.454'N
Long Creek Reservoir	118° 9.597'W	44° 21.486'N
Short Creek Dip	118° 23.737'W	44° 15.844'N
Little Dip	118° 15.614'W	44° 14.569'N
Prairie Dip	118° 20.342'W	44° 13.478'N
Meadow Dip	118° 14.338'W	44° 13.312'N
Tender Fill	118° 15.686'W	44° 25.357'N
CMD 3	118° 18.979'W	44° 20.003'N
CMD 9	118° 37.648'W	44° 34.94'N
CMD 12	118° 7.308'W	44° 15.117'N
IRAWS 3	118° 21.599'W	44° 14.807'N
IRAWS 4	118° 24.484'W	44° 22.267'N

TFR 6/6395
SFC to 10,500 MSL
FREQ 134.075



118°33'W 118°32'W 118°31'W 118°30'W 118°29'W 118°28'W 118°27'W 118°26'W 118°25'W 118°24'W 118°23'W 118°22'W 118°21'W 118°20'W 118°19'W 118°18'W 118°17'W 118°16'W 118°15'W 118°14'W 118°13'W 118°12'W 118°11'W 118°10'W 118°9'W 118°8'W 118°7'W

44°7'N 44°6'N 44°5'N 44°4'N 44°3'N 44°2'N 44°1'N 44°0'N 43°59'N 43°58'N 43°57'N 43°56'N 43°55'N 43°54'N 43°53'N 43°52'N 43°51'N 43°50'N 43°49'N 43°48'N 43°47'N 43°46'N 43°45'N 43°44'N 43°43'N 43°42'N 43°41'N 43°40'N 43°39'N 43°38'N 43°37'N 43°36'N 43°35'N 43°34'N 43°33'N 43°32'N 43°31'N 43°30'N 43°29'N 43°28'N 43°27'N 43°26'N 43°25'N 43°24'N 43°23'N 43°22'N 43°21'N 43°20'N 43°19'N 43°18'N 43°17'N 43°16'N 43°15'N 43°14'N 43°13'N 43°12'N 43°11'N 43°10'N 43°9'N 43°8'N 43°7'N 43°6'N 43°5'N 43°4'N 43°3'N 43°2'N 43°1'N 43°0'N