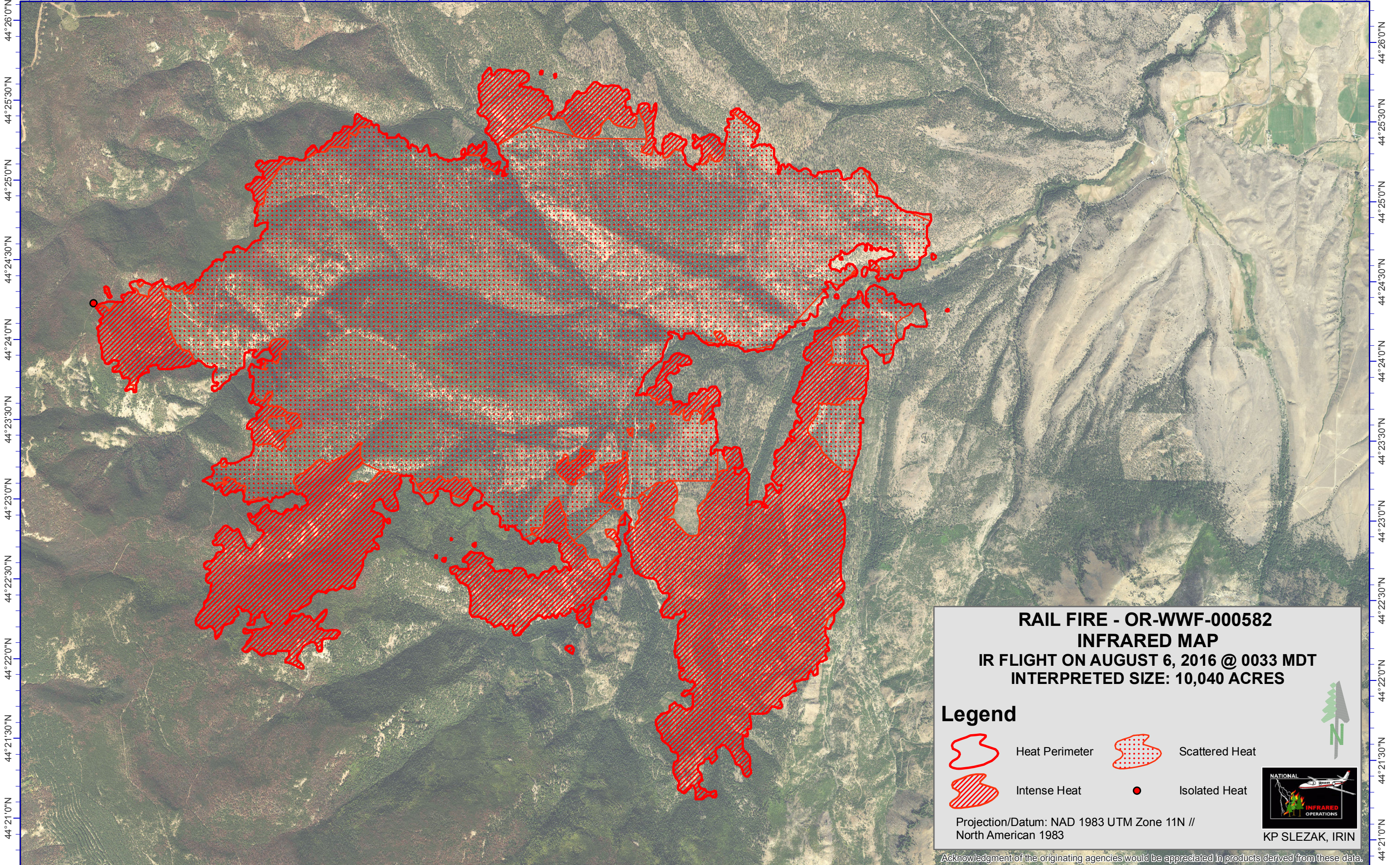






118°25'0"W 118°24'30"W 118°24'0"W 118°23'30"W 118°23'0"W 118°22'30"W 118°22'0"W 118°21'30"W 118°21'0"W 118°20'30"W 118°20'0"W 118°19'30"W 118°19'0"W 118°18'30"W 118°18'0"W 118°17'30"W 118°17'0"W 118°16'30"W 118°16'0"W 118°15'30"W 118°15'0"W 118°14'30"W 118°14'0"W




RAIL FIRE - OR-WWF-000582
INFRARED MAP
 IR FLIGHT ON AUGUST 6, 2016 @ 0033 MDT
 INTERPRETED SIZE: 10,040 ACRES

Legend

	Heat Perimeter		Scattered Heat
	Intense Heat		Isolated Heat

Projection/Datum: NAD 1983 UTM Zone 11N // North American 1983


 NATIONAL INFRARED OPERATIONS
 KP SLEZAK, IRIN

Acknowledgment of the originating agencies would be appreciated in products derived from these data.

118°25'0"W 118°24'30"W 118°24'0"W 118°23'30"W 118°23'0"W 118°22'30"W 118°22'0"W 118°21'30"W 118°21'0"W 118°20'30"W 118°20'0"W 118°19'30"W 118°19'0"W 118°18'30"W 118°18'0"W 118°17'30"W 118°17'0"W 118°16'30"W 118°16'0"W 118°15'30"W 118°15'0"W 118°14'30"W 118°14'0"W