

118°26'30"W 118°26'0"W 118°25'30"W 118°25'0"W 118°24'30"W 118°24'0"W 118°23'30"W 118°23'0"W 118°22'30"W 118°22'0"W 118°21'30"W 118°21'0"W 118°20'30"W 118°20'0"W 118°19'30"W 118°19'0"W 118°18'30"W 118°18'0"W 118°17'30"W 118°17'0"W 118°16'30"W 118°16'0"W 118°15'30"W



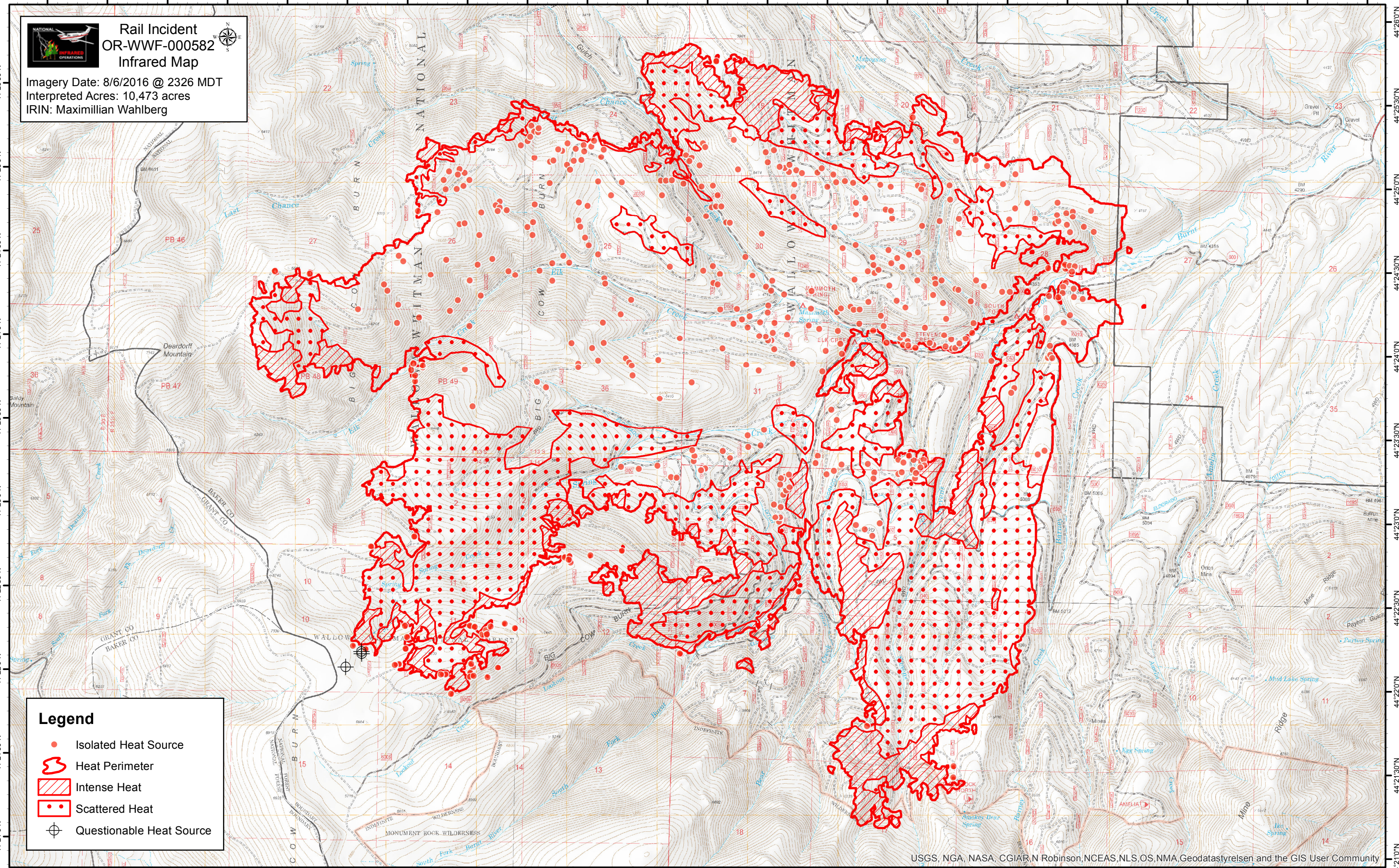
# Rail Incident OR-WWF-000582 Infrared Map



Imagery Date: 8/6/2016 @ 2326 MDT  
Interpreted Acres: 10,473 acres  
IRIN: Maximilian Wahlberg

## Legend

- Isolated Heat Source
- ⊃ Heat Perimeter
- ▨ Intense Heat
- Scattered Heat
- Questionable Heat Source



118°26'30"W 118°26'0"W 118°25'30"W 118°25'0"W 118°24'30"W 118°24'0"W 118°23'30"W 118°23'0"W 118°22'30"W 118°22'0"W 118°21'30"W 118°21'0"W 118°20'30"W 118°20'0"W 118°19'30"W 118°19'0"W 118°18'30"W 118°18'0"W 118°17'30"W 118°17'0"W 118°16'30"W 118°16'0"W 118°15'30"W