

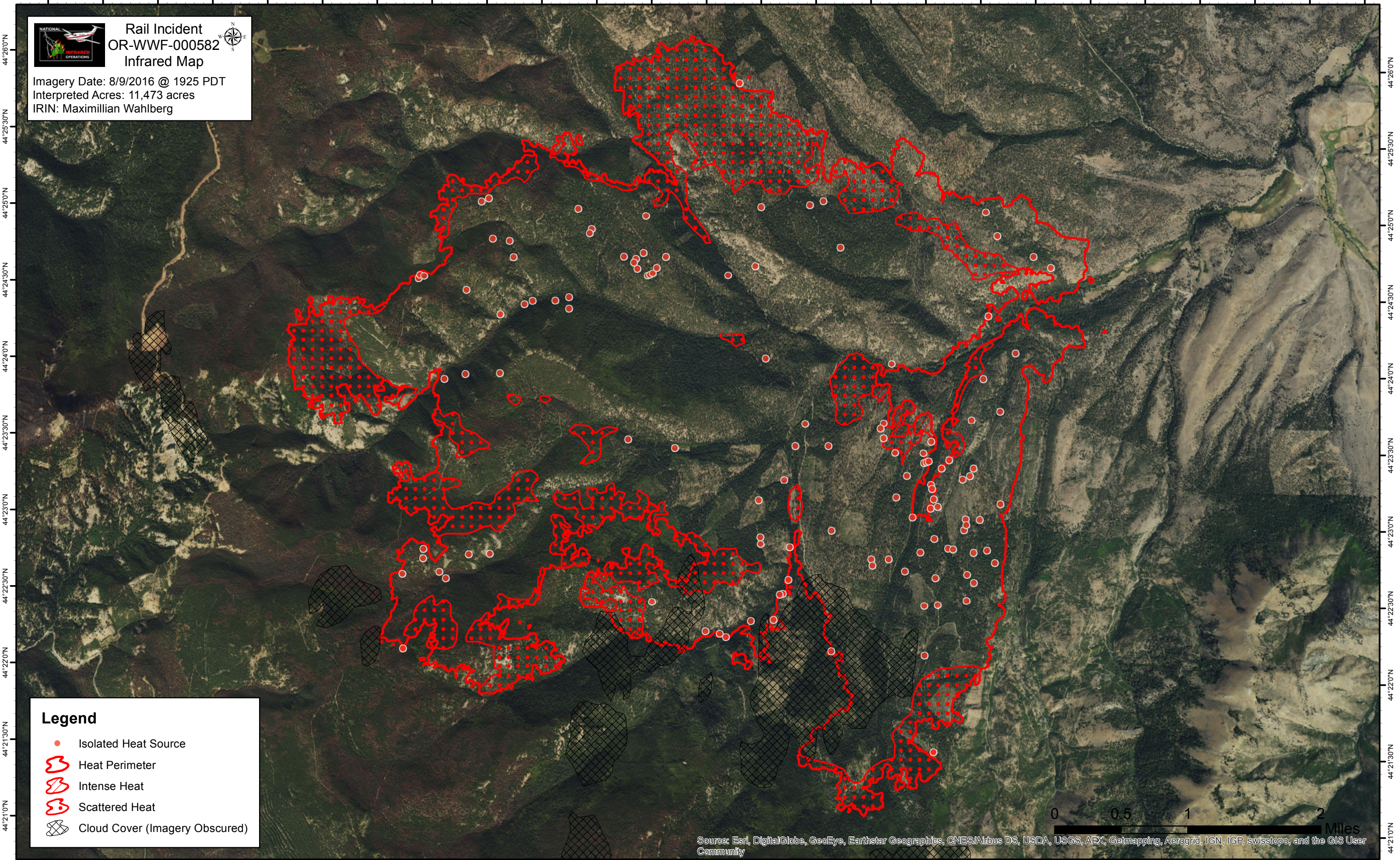
118°27'0"W 118°26'30"W 118°26'0"W 118°25'30"W 118°25'0"W 118°24'30"W 118°24'0"W 118°23'30"W 118°23'0"W 118°22'30"W 118°22'0"W 118°21'30"W 118°21'0"W 118°20'30"W 118°20'0"W 118°19'30"W 118°19'0"W 118°18'30"W 118°18'0"W 118°17'30"W 118°17'0"W 118°16'30"W 118°16'0"W 118°15'30"W 118°15'0"W



Rail Incident OR-WWF-000582 Infrared Map

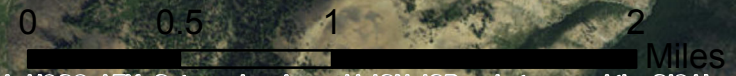


Imagery Date: 8/9/2016 @ 1925 PDT
Interpreted Acres: 11,473 acres
IRIN: Maximillian Wahlberg



Legend

- Isolated Heat Source
- ⬮ Heat Perimeter
- ⬮ Intense Heat
- ⬮ Scattered Heat
- ⬮ Cloud Cover (Imagery Obscured)



Source: Esri, DigitalGlobe, GeoEye, Earthstar Geographics, CNES/Airbus DS, USDA, USGS, AEX, Getmapping, Aerogrid, IGN, IGP, swisstopo, and the GIS User Community

118°27'0"W 118°26'30"W 118°26'0"W 118°25'30"W 118°25'0"W 118°24'30"W 118°24'0"W 118°23'30"W 118°23'0"W 118°22'30"W 118°22'0"W 118°21'30"W 118°21'0"W 118°20'30"W 118°20'0"W 118°19'30"W 118°19'0"W 118°18'30"W 118°18'0"W 118°17'30"W 118°17'0"W 118°16'30"W 118°16'0"W 118°15'30"W 118°15'0"W