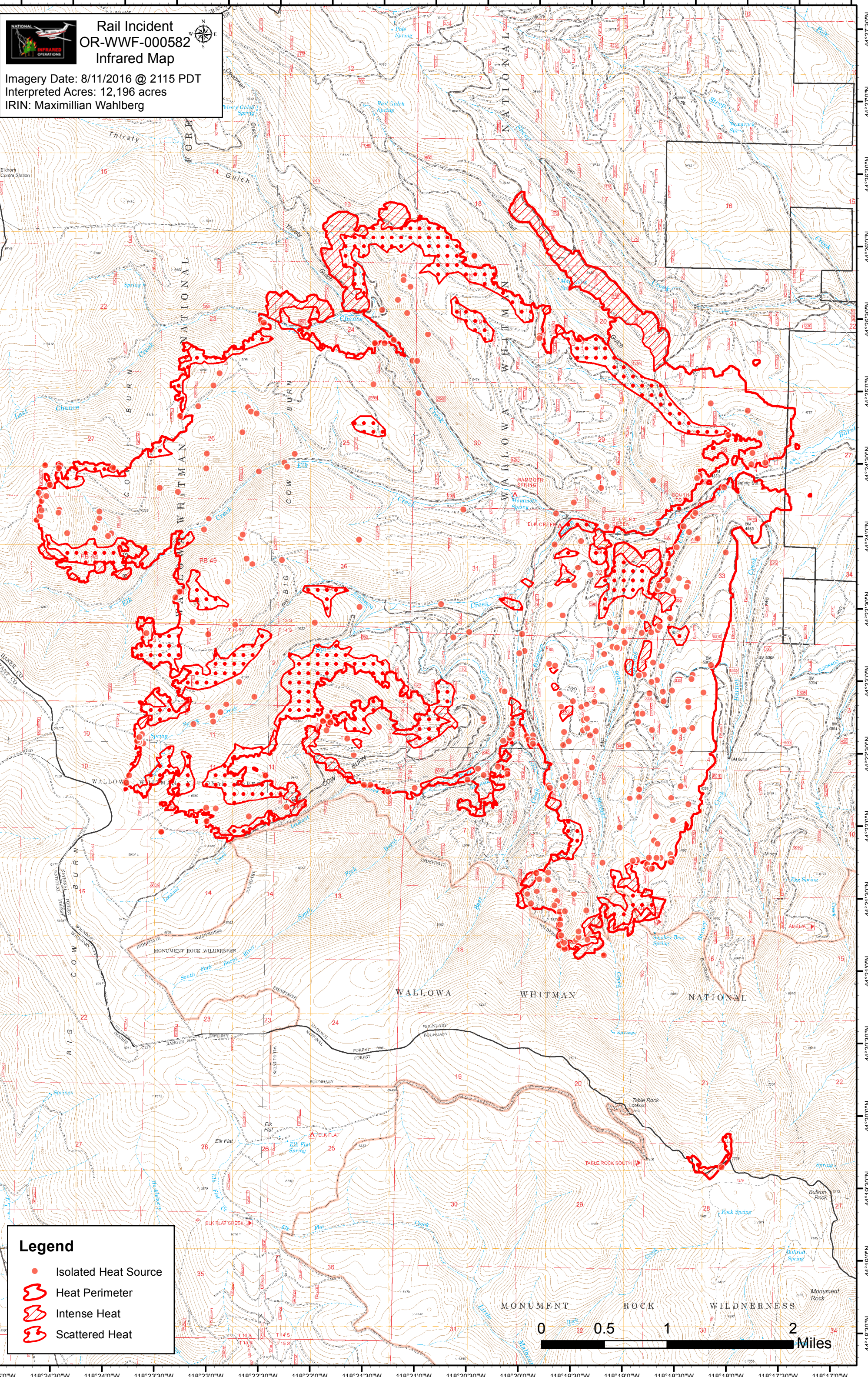


118°25'0"W 118°24'30"W 118°24'0"W 118°23'30"W 118°23'0"W 118°22'30"W 118°22'0"W 118°21'30"W 118°21'0"W 118°20'30"W 118°20'0"W 118°19'30"W 118°19'0"W 118°18'30"W 118°18'0"W 118°17'30"W 118°17'0"W

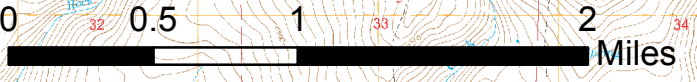


Rail Incident OR-WWF-000582 Infrared Map

Imagery Date: 8/11/2016 @ 2115 PDT
Interpreted Acres: 12,196 acres
IRIN: Maximillian Wahlberg

Legend

- Isolated Heat Source
- ⊃ Heat Perimeter
- ⊂ Intense Heat
- ⊄ Scattered Heat



118°25'0"W 118°24'30"W 118°24'0"W 118°23'30"W 118°23'0"W 118°22'30"W 118°22'0"W 118°21'30"W 118°21'0"W 118°20'30"W 118°20'0"W 118°19'30"W 118°19'0"W 118°18'30"W 118°18'0"W 118°17'30"W 118°17'0"W