

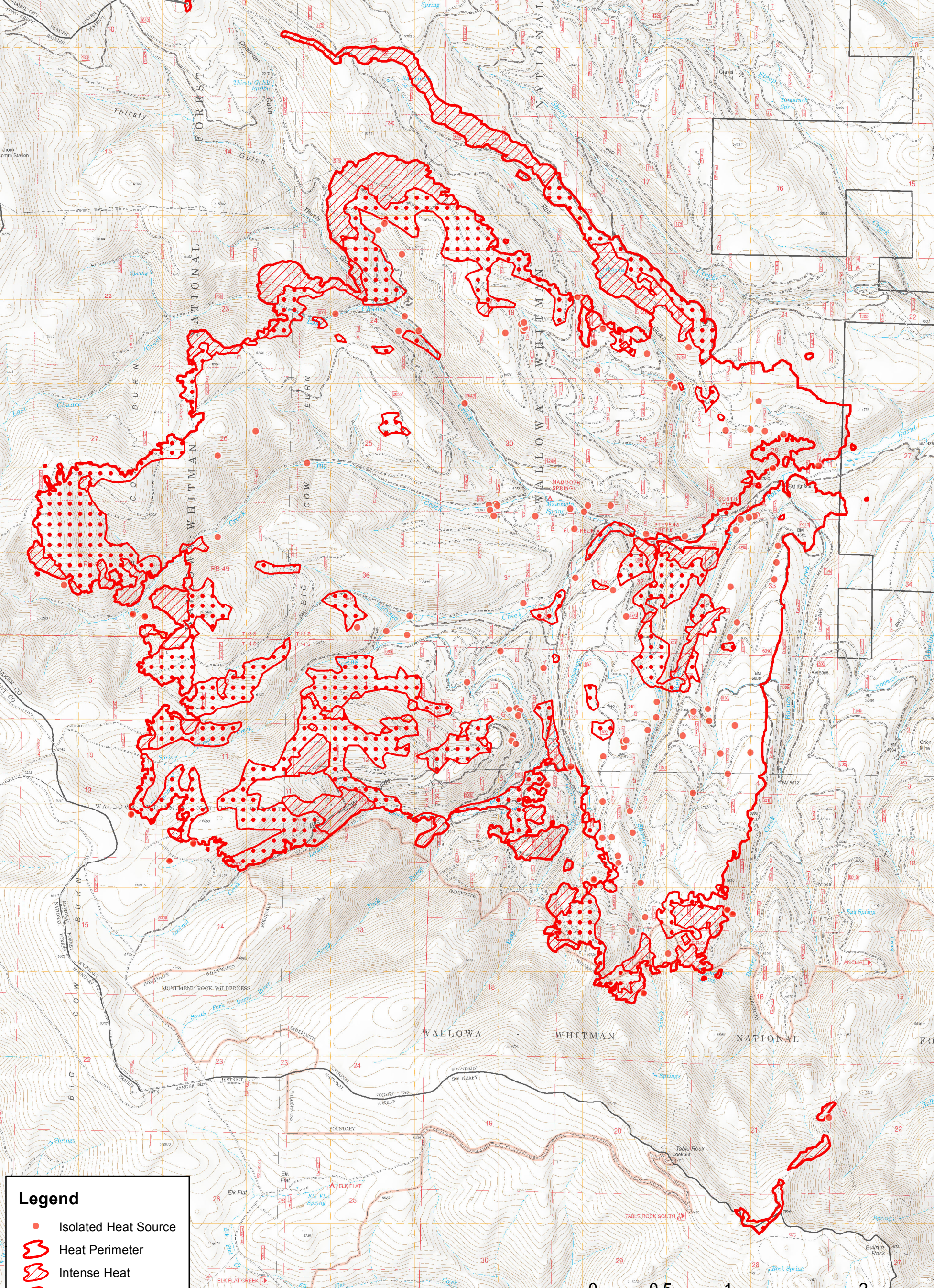
118°25'0"W 118°24'30"W 118°24'0"W 118°23'30"W 118°23'0"W 118°22'30"W 118°22'0"W 118°21'30"W 118°21'0"W 118°20'30"W 118°20'0"W 118°19'30"W 118°19'0"W 118°18'30"W 118°18'0"W 118°17'30"W 118°17'0"W



Rail Incident OR-WWF-000582 Infrared Map

Imagery Date: 8/12/2016 @ 2104 PDT
Interpreted Acres: 13,500 acres
IRIN: Maximillian Wahlberg

118 23 28.36 W 44 27 22.63 N



Legend

- Isolated Heat Source
- ▭ Heat Perimeter
- ▨ Intense Heat
- ▩ Scattered Heat

USGS, NGA, NASA, CGIAR, www.fedcenter.gov, www.eas.nls.os.gov, www.ecoquery.com, and the User Community

118°25'0"W 118°24'30"W 118°24'0"W 118°23'30"W 118°23'0"W 118°22'30"W 118°22'0"W 118°21'30"W 118°21'0"W 118°20'30"W 118°20'0"W 118°19'30"W 118°19'0"W 118°18'30"W 118°18'0"W 118°17'30"W 118°17'0"W

44°28'0"N
44°27'30"N
44°27'0"N
44°26'30"N
44°26'0"N
44°25'30"N
44°25'0"N
44°24'30"N
44°24'0"N
44°23'30"N
44°23'0"N
44°22'30"N
44°22'0"N
44°21'30"N
44°21'0"N
44°20'30"N
44°20'0"N
44°19'30"N
44°19'0"N

44°28'0"N
44°28'0"N
44°27'30"N
44°27'0"N
44°26'30"N
44°26'0"N
44°25'30"N
44°25'0"N
44°24'30"N
44°24'0"N
44°23'30"N
44°23'0"N
44°22'30"N
44°22'0"N
44°21'30"N
44°21'0"N
44°20'30"N
44°20'0"N
44°19'30"N
44°19'0"N