

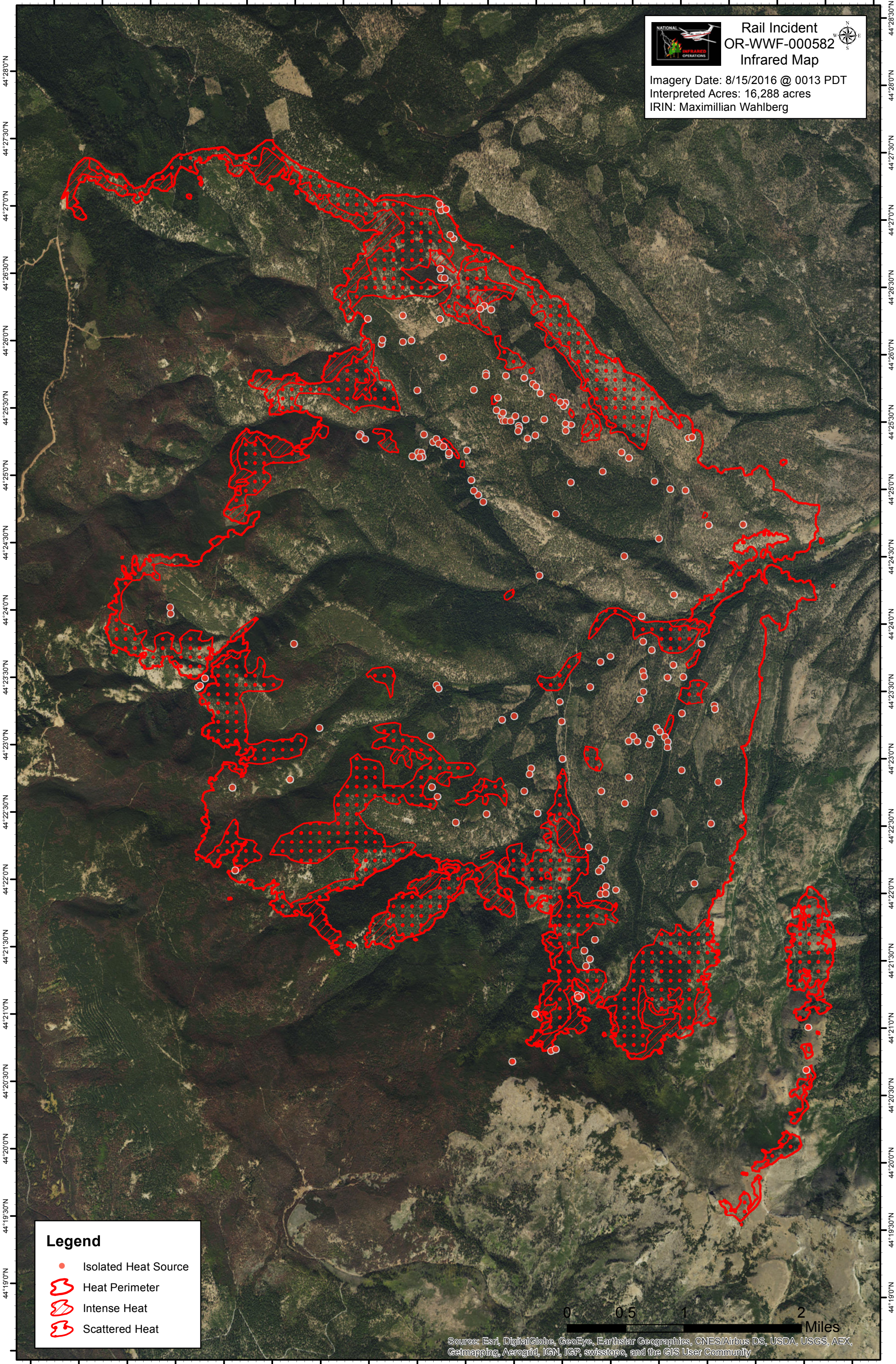


118°25'30"W 118°25'0"W 118°24'30"W 118°24'0"W 118°23'30"W 118°23'0"W 118°22'30"W 118°22'0"W 118°21'30"W 118°21'0"W 118°20'30"W 118°20'0"W 118°19'30"W 118°19'0"W 118°18'30"W 118°18'0"W 118°17'30"W 118°17'0"W



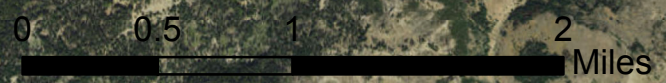
Rail Incident
OR-WWF-000582
Infrared Map

Imagery Date: 8/15/2016 @ 0013 PDT
 Interpreted Acres: 16,288 acres
 IRIN: Maximillian Wahlberg

Legend

- Isolated Heat Source
- ⬮ Heat Perimeter
- ⬭ Intense Heat
- ⬮ Scattered Heat



Source: Esri, DigitalGlobe, GeoEye, Earthstar Geographics, CNES/Airbus DS, USDA, USGS, AEX, Getmapping, Aerogrid, IGN, IGP, swisstopo, and the GIS User Community

118°25'30"W 118°25'0"W 118°24'30"W 118°24'0"W 118°23'30"W 118°23'0"W 118°22'30"W 118°22'0"W 118°21'30"W 118°21'0"W 118°20'30"W 118°20'0"W 118°19'30"W 118°19'0"W 118°18'30"W 118°18'0"W 118°17'30"W 118°17'0"W