

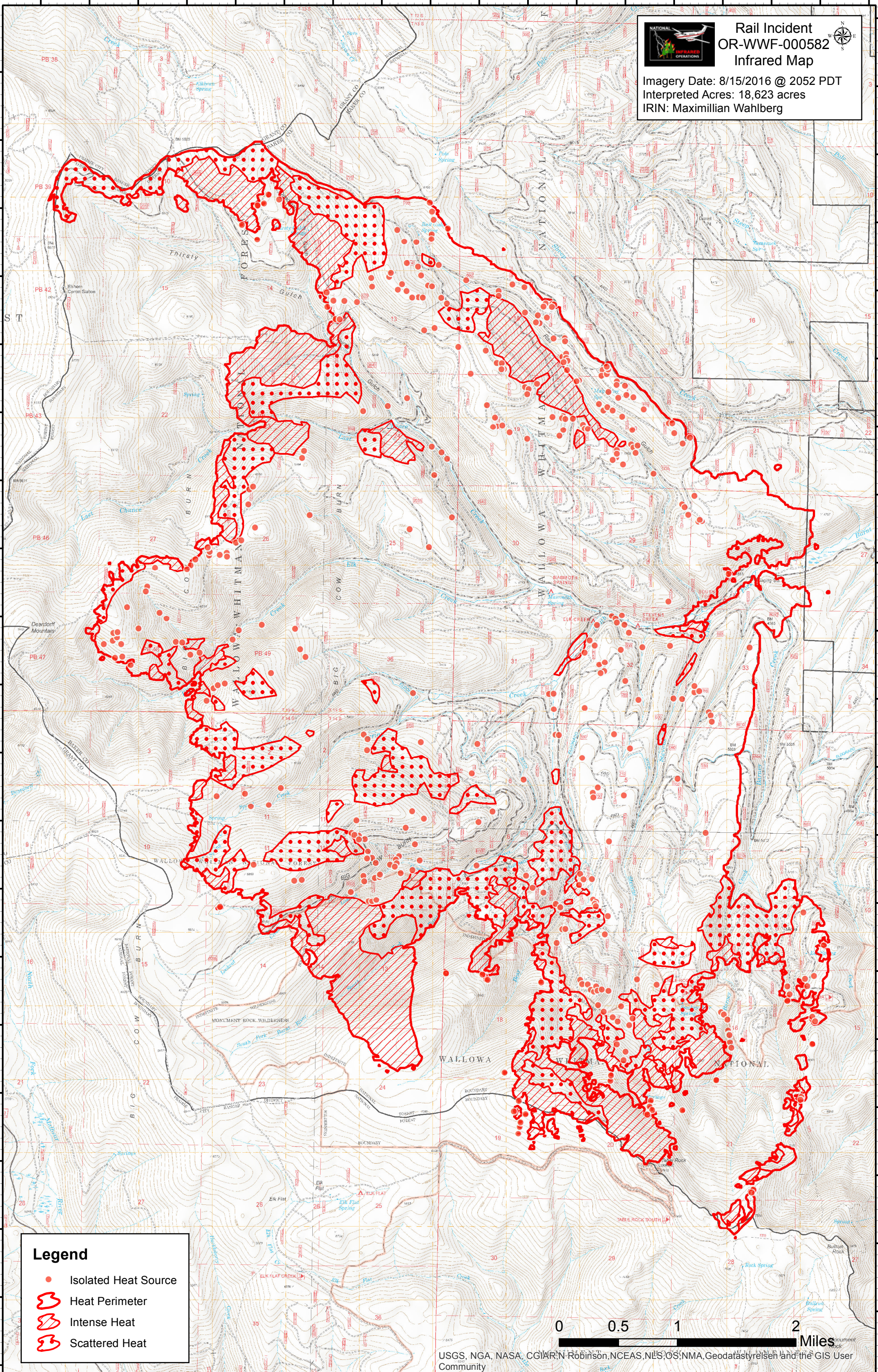


118°25'30"W 118°25'0"W 118°24'30"W 118°24'0"W 118°23'30"W 118°23'0"W 118°22'30"W 118°22'0"W 118°21'30"W 118°21'0"W 118°20'30"W 118°20'0"W 118°19'30"W 118°19'0"W 118°18'30"W 118°18'0"W 118°17'30"W 118°17'0"W



**Rail Incident
OR-WWF-000582
Infrared Map**

Imagery Date: 8/15/2016 @ 2052 PDT
Interpreted Acres: 18,623 acres
IRIN: Maximillian Wahlberg

Legend

- Isolated Heat Source
- ⊃ Heat Perimeter
- ⊂ Intense Heat
- ⊄ Scattered Heat



USGS, NGA, NASA, CGIAR/N Robinson, NCEAS, NLS, OS, NMA, Geodastyreisen and the GIS User Community

118°25'30"W 118°25'0"W 118°24'30"W 118°24'0"W 118°23'30"W 118°23'0"W 118°22'30"W 118°22'0"W 118°21'30"W 118°21'0"W 118°20'30"W 118°20'0"W 118°19'30"W 118°19'0"W 118°18'30"W 118°18'0"W 118°17'30"W 118°17'0"W