
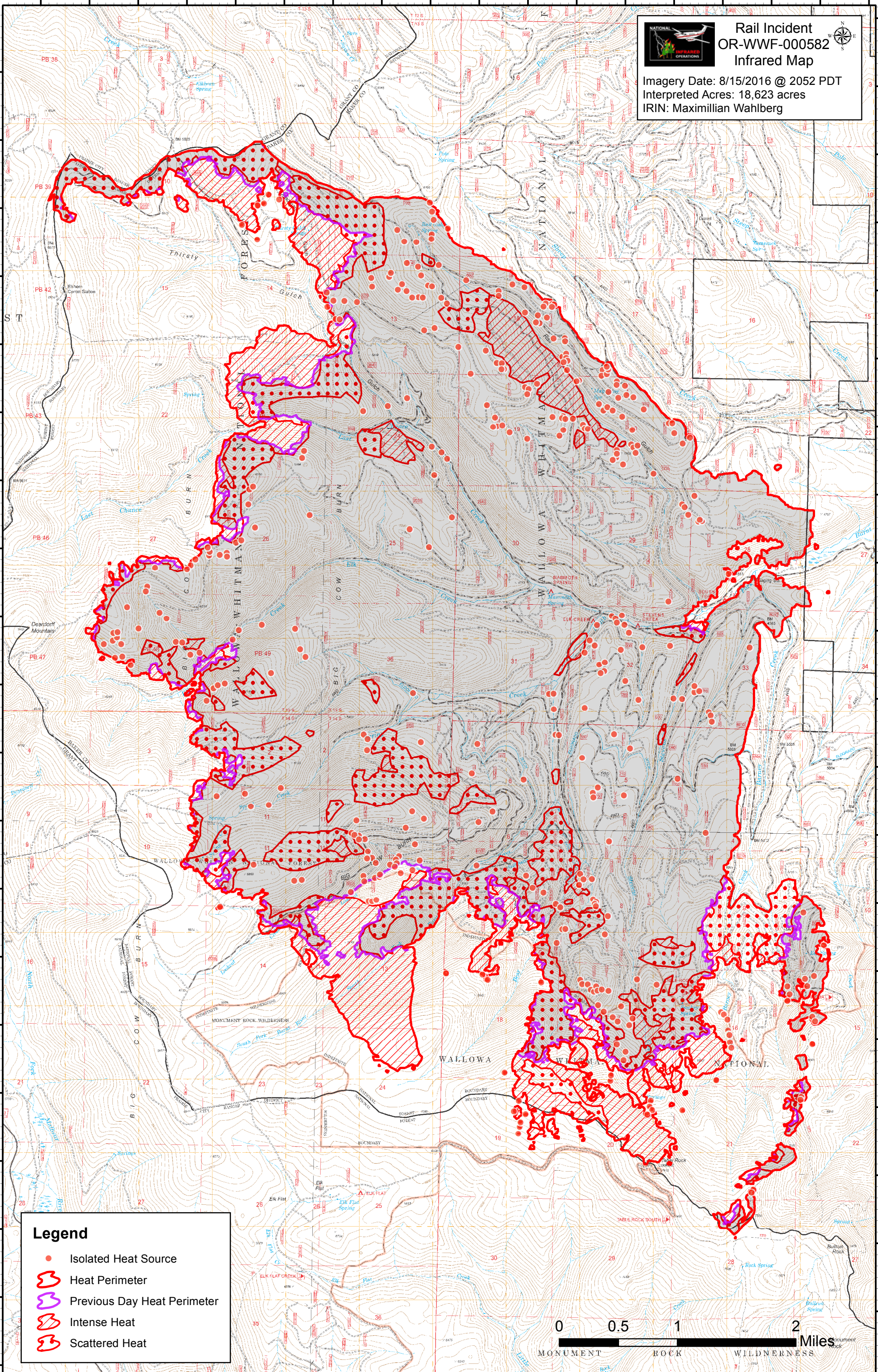


118°25'30"W 118°25'0"W 118°24'30"W 118°24'0"W 118°23'30"W 118°23'0"W 118°22'30"W 118°22'0"W 118°21'30"W 118°21'0"W 118°20'30"W 118°20'0"W 118°19'30"W 118°19'0"W 118°18'30"W 118°18'0"W 118°17'30"W 118°17'0"W



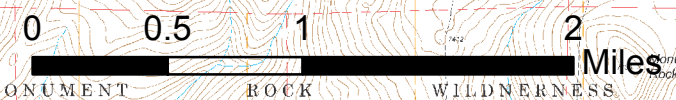
**Rail Incident  
OR-WWF-000582  
Infrared Map**

Imagery Date: 8/15/2016 @ 2052 PDT  
Interpreted Acres: 18,623 acres  
IRIN: Maximillian Wahlberg



**Legend**

- Isolated Heat Source
- ⬮ Heat Perimeter
- ⬮ Previous Day Heat Perimeter
- ⬮ Intense Heat
- ⬮ Scattered Heat



118°25'30"W 118°25'0"W 118°24'30"W 118°24'0"W 118°23'30"W 118°23'0"W 118°22'30"W 118°22'0"W 118°21'30"W 118°21'0"W 118°20'30"W 118°20'0"W 118°19'30"W 118°19'0"W 118°18'30"W 118°18'0"W 118°17'30"W 118°17'0"W