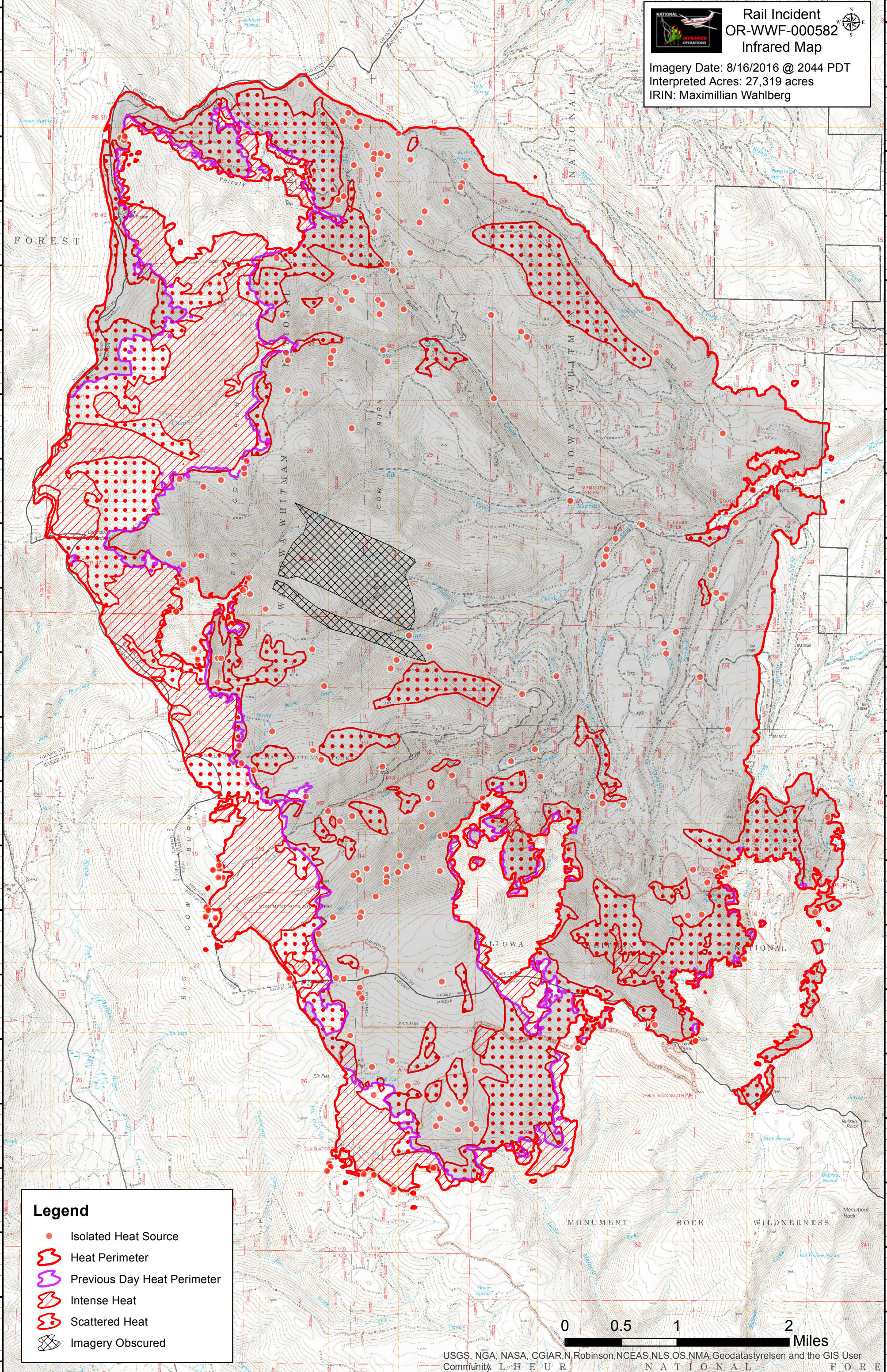


Rail Incident
OR-WWF-000582
Infrared Map

Imagery Date: 8/16/2016 @ 2044 PDT
 Interpreted Acres: 27,319 acres
 IRIN: Maximillian Wahlberg



Legend

- Isolated Heat Source
- Heat Perimeter
- Previous Day Heat Perimeter
- Intense Heat
- Scattered Heat
- Imagery Obscured



USGS, NGA, NASA, CGIAR, NRobinson, NCEAS, NLS, OS, NMA, Geodatastyrelsen and the GIS User Community

44°28'00"N 44°27'30"N 44°27'00"N 44°26'30"N 44°26'00"N 44°25'30"N 44°25'00"N 44°24'30"N 44°24'00"N 44°23'30"N 44°23'00"N 44°22'30"N 44°22'00"N 44°21'30"N 44°21'00"N 44°20'30"N 44°20'00"N 44°19'30"N 44°19'00"N 44°18'30"N 44°18'00"N 44°17'30"N

118°26'30"W 118°26'00"W 118°25'30"W 118°25'00"W 118°24'30"W 118°24'00"W 118°23'30"W 118°23'00"W 118°22'30"W 118°22'00"W 118°21'30"W 118°21'00"W 118°20'30"W 118°20'00"W 118°19'30"W 118°19'00"W 118°18'30"W 118°18'00"W 118°17'30"W 118°17'00"W