

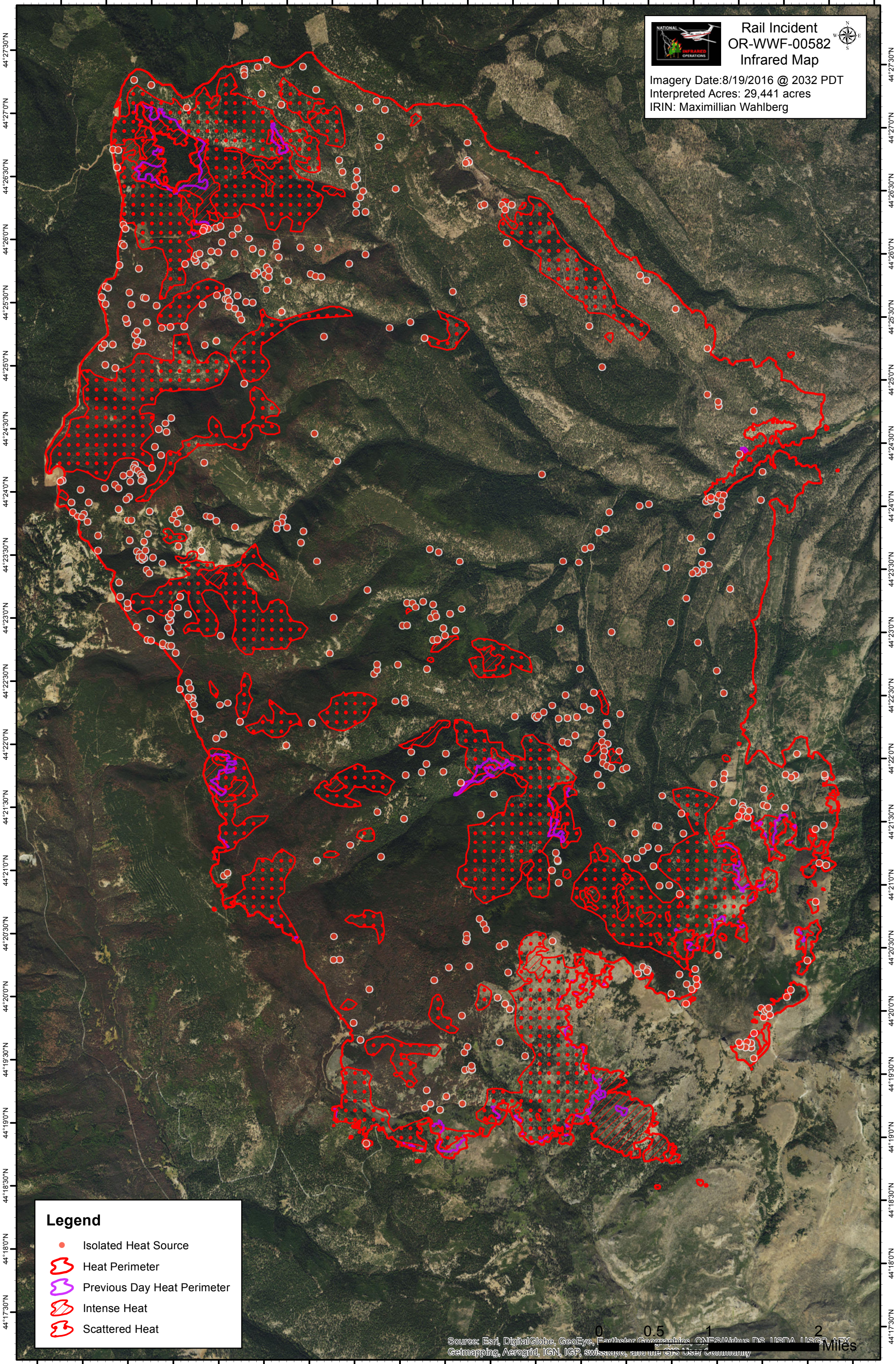


118°26'0"W 118°25'30"W 118°25'0"W 118°24'30"W 118°24'0"W 118°23'30"W 118°23'0"W 118°22'30"W 118°22'0"W 118°21'30"W 118°21'0"W 118°20'30"W 118°20'0"W 118°19'30"W 118°19'0"W 118°18'30"W 118°18'0"W 118°17'30"W 118°17'0"W



**Rail Incident
OR-WWF-00582
Infrared Map**

Imagery Date: 8/19/2016 @ 2032 PDT
Interpreted Acres: 29,441 acres
IRIN: Maximillian Wahlberg

Legend

- Isolated Heat Source
- ⬮ Heat Perimeter
- ⬮ Previous Day Heat Perimeter
- ⬮ Intense Heat
- ⬮ Scattered Heat

0 0.5 1 2 Miles

Source: Esri, DigitalGlobe, GeoEye, Earthstar Geographics, CNES/Airbus DS, USDA, USGS, AeroGRID, IGN, IGP, swisstopo, and the GIS User Community

118°26'0"W 118°25'30"W 118°25'0"W 118°24'30"W 118°24'0"W 118°23'30"W 118°23'0"W 118°22'30"W 118°22'0"W 118°21'30"W 118°21'0"W 118°20'30"W 118°20'0"W 118°19'30"W 118°19'0"W 118°18'30"W 118°18'0"W 118°17'30"W 118°17'0"W