

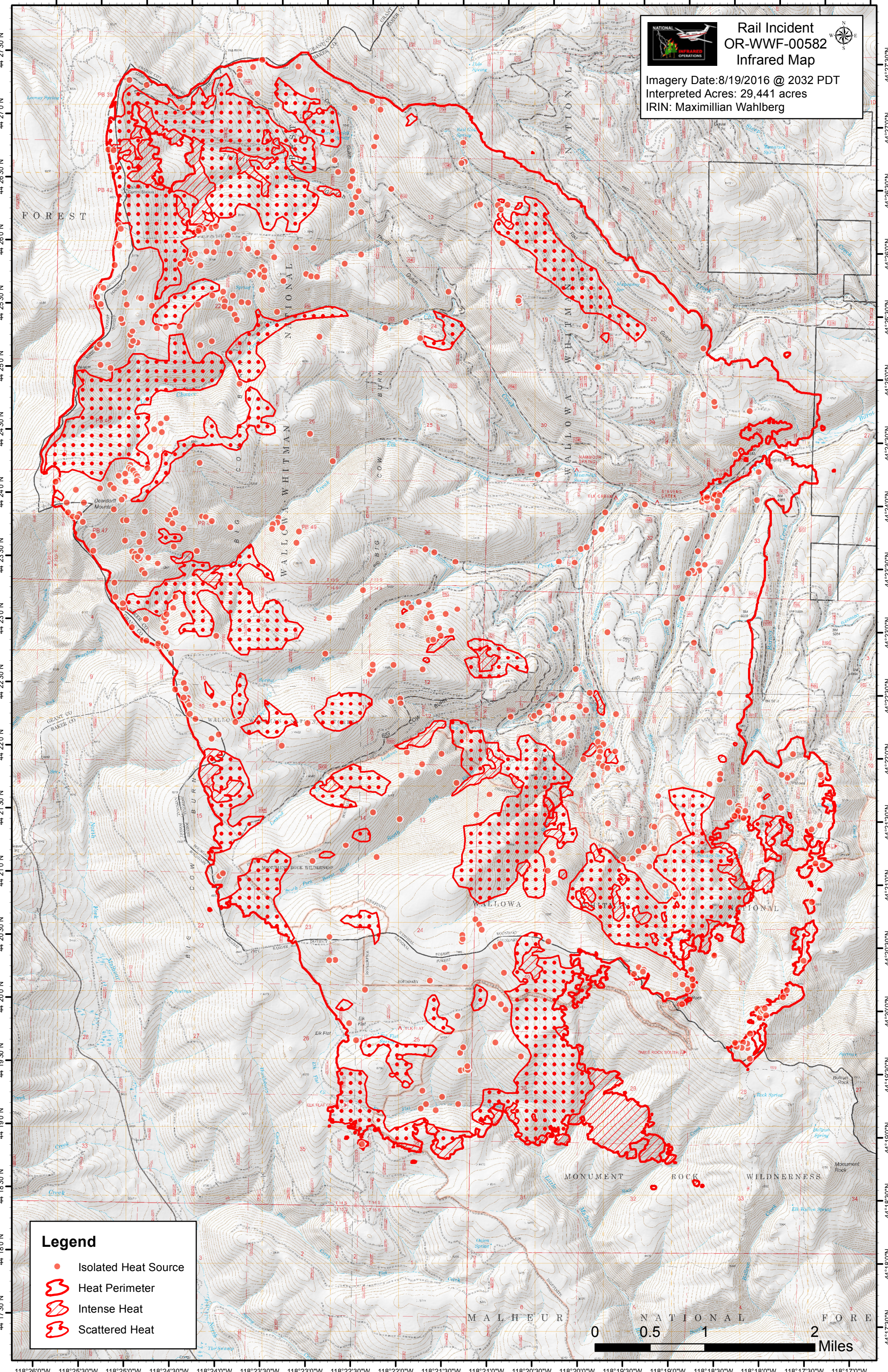


118°26'0"W 118°25'30"W 118°25'0"W 118°24'30"W 118°24'0"W 118°23'30"W 118°23'0"W 118°22'30"W 118°22'0"W 118°21'30"W 118°21'0"W 118°20'30"W 118°20'0"W 118°19'30"W 118°19'0"W 118°18'30"W 118°18'0"W 118°17'30"W 118°17'0"W



**Rail Incident  
OR-WWF-00582  
Infrared Map**

Imagery Date: 8/19/2016 @ 2032 PDT  
Interpreted Acres: 29,441 acres  
IRIN: Maximilian Wahlberg

**Legend**

- Isolated Heat Source
- ⌞ Heat Perimeter
- ⌞ Intense Heat
- ⌞ Scattered Heat



118°26'0"W 118°25'30"W 118°25'0"W 118°24'30"W 118°24'0"W 118°23'30"W 118°23'0"W 118°22'30"W 118°22'0"W 118°21'30"W 118°21'0"W 118°20'30"W 118°20'0"W 118°19'30"W 118°19'0"W 118°18'30"W 118°18'0"W 118°17'30"W 118°17'0"W