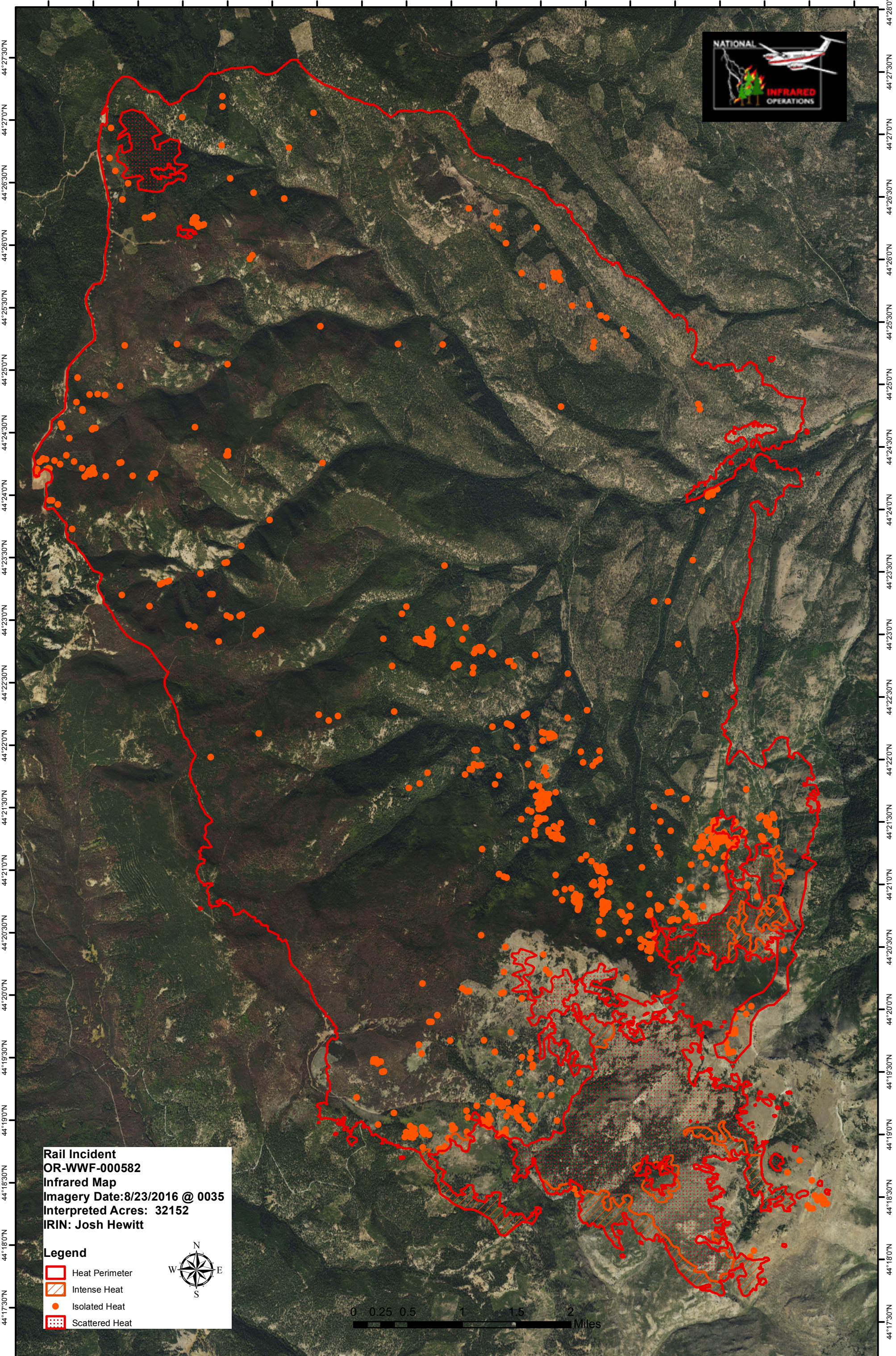




118°26'0"W 118°25'30"W 118°25'0"W 118°24'30"W 118°24'0"W 118°23'30"W 118°23'0"W 118°22'30"W 118°22'0"W 118°21'30"W 118°21'0"W 118°20'30"W 118°20'0"W 118°19'30"W 118°19'0"W 118°18'30"W 118°18'0"W 118°17'30"W 118°17'0"W



Rail Incident
OR-WWF-000582
Infrared Map
Imagery Date: 8/23/2016 @ 0035
Interpreted Acres: 32152
IRIN: Josh Hewitt

Legend

-  Heat Perimeter
-  Intense Heat
-  Isolated Heat
-  Scattered Heat



118°26'0"W 118°25'30"W 118°25'0"W 118°24'30"W 118°24'0"W 118°23'30"W 118°23'0"W 118°22'30"W 118°22'0"W 118°21'30"W 118°21'0"W 118°20'30"W 118°20'0"W 118°19'30"W 118°19'0"W 118°18'30"W 118°18'0"W 118°17'30"W 118°17'0"W 118°16'30"W