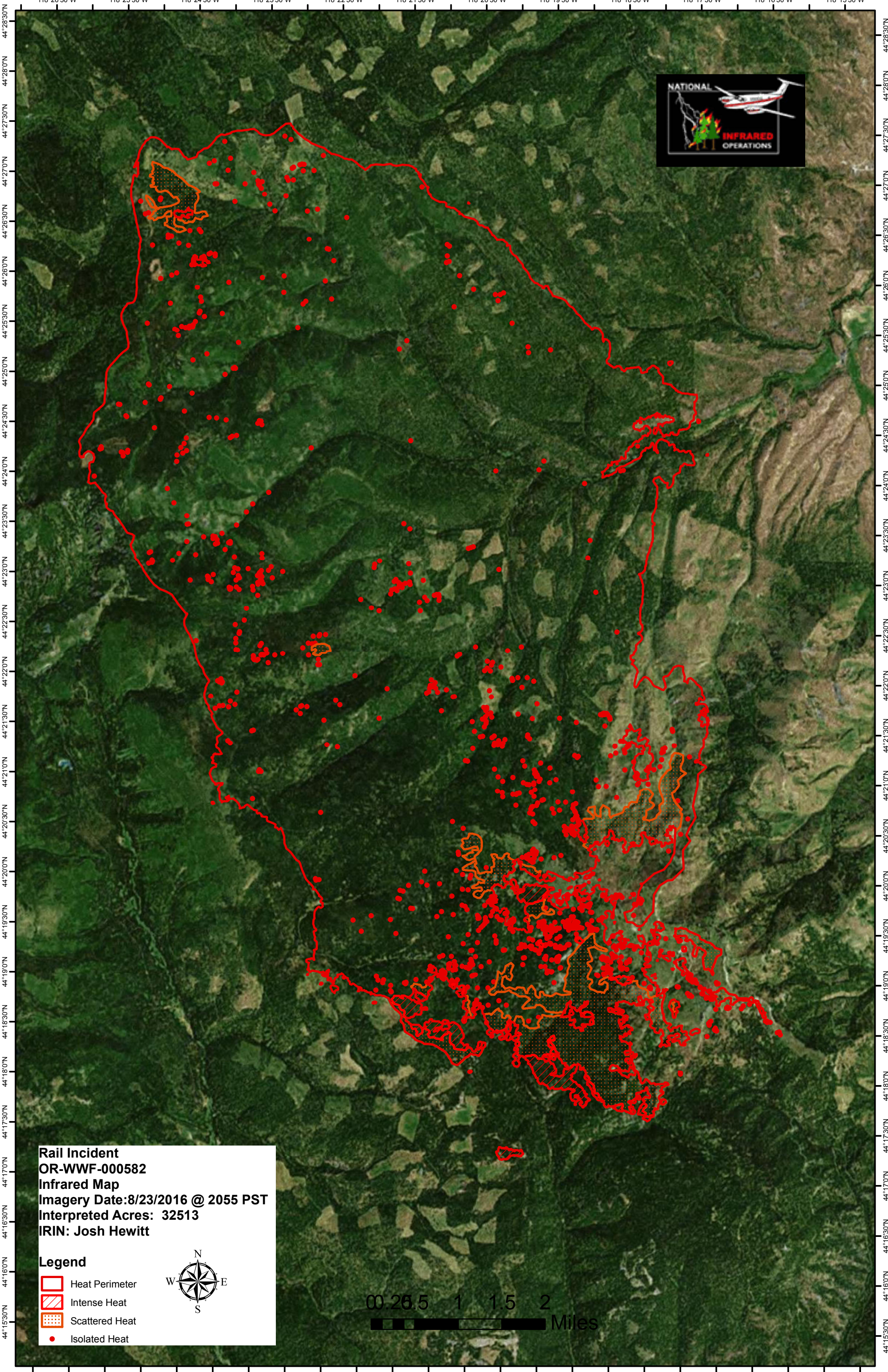
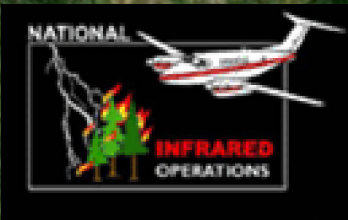



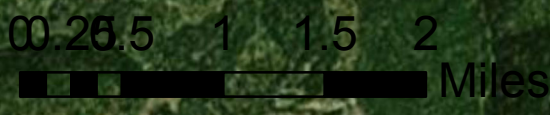
118°26'30"W 118°25'30"W 118°24'30"W 118°23'30"W 118°22'30"W 118°21'30"W 118°20'30"W 118°19'30"W 118°18'30"W 118°17'30"W 118°16'30"W 118°15'30"W



Rail Incident
OR-WWF-000582
Infrared Map
Imagery Date: 8/23/2016 @ 2055 PST
Interpreted Acres: 32513
IRIN: Josh Hewitt

Legend

- Heat Perimeter
- Intense Heat
- Scattered Heat
- Isolated Heat

118°26'30"W 118°25'30"W 118°24'30"W 118°23'30"W 118°22'30"W 118°21'30"W 118°20'30"W 118°19'30"W 118°18'30"W 118°17'30"W 118°16'30"W 118°15'30"W