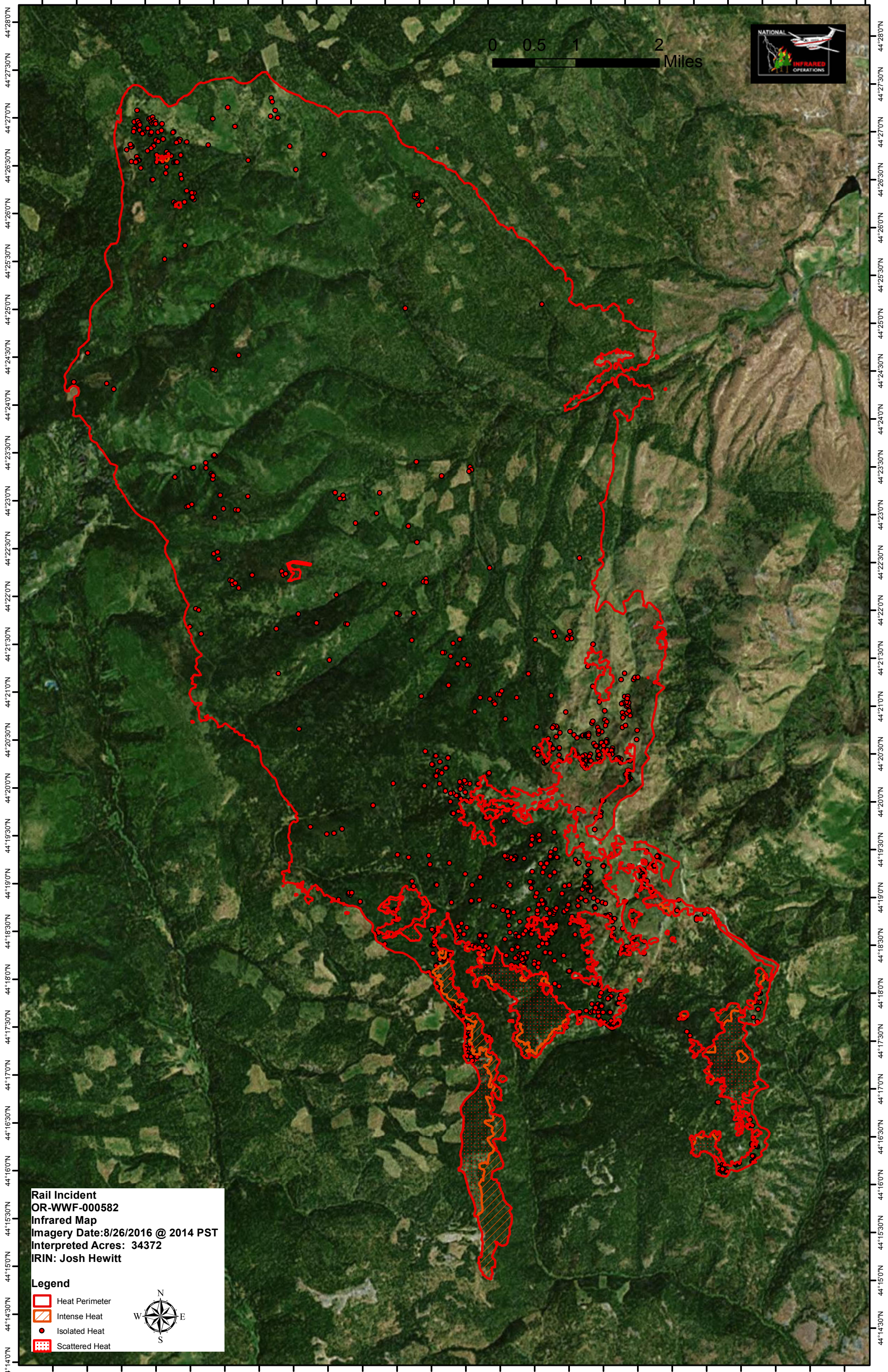






118°26'30"W 118°25'30"W 118°24'30"W 118°23'30"W 118°22'30"W 118°21'30"W 118°20'30"W 118°19'30"W 118°18'30"W 118°17'30"W 118°16'30"W 118°15'30"W 118°14'30"W




0 0.5 1 2 Miles

Rail Incident
OR-WWF-000582
Infrared Map
Imagery Date: 8/26/2016 @ 2014 PST
Interpreted Acres: 34372
IRIN: Josh Hewitt

Legend

-  Heat Perimeter
-  Intense Heat
-  Isolated Heat
-  Scattered Heat



118°25'30"W 118°24'30"W 118°23'30"W 118°22'30"W 118°21'30"W 118°20'30"W 118°19'30"W 118°18'30"W 118°17'30"W 118°16'30"W 118°15'30"W 118°14'30"W