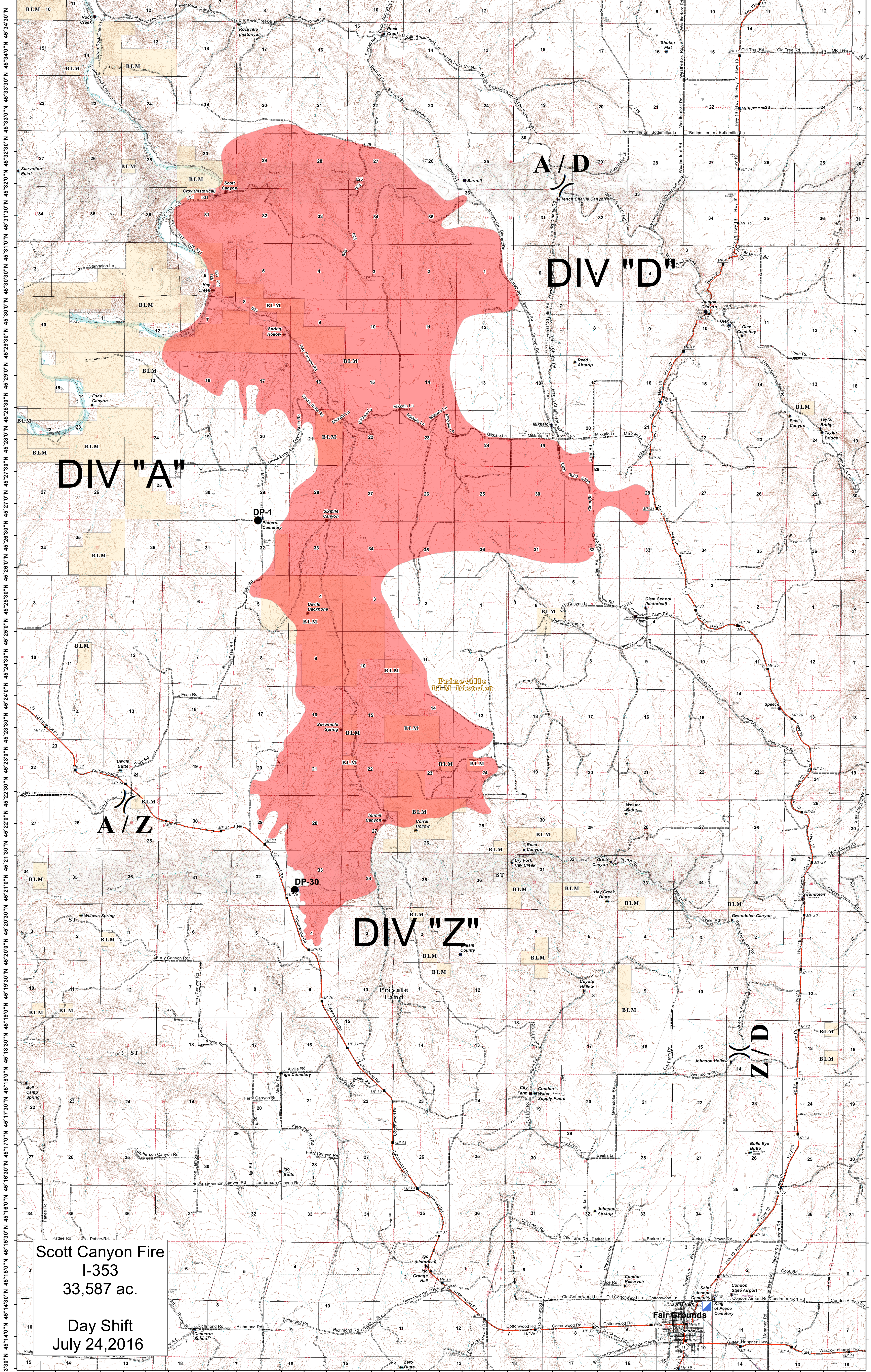


120°26'0"W 120°25'0"W 120°24'0"W 120°23'0"W 120°22'0"W 120°21'0"W 120°20'0"W 120°19'0"W 120°18'0"W 120°17'0"W 120°16'0"W 120°15'0"W 120°14'0"W 120°13'0"W 120°12'0"W 120°11'0"W 120°10'0"W 120°9'0"W 120°8'0"W



DIV "A"

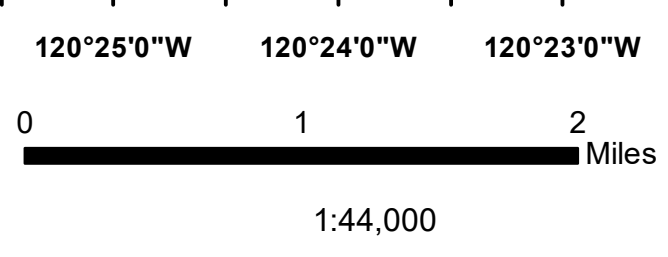
A/D
DIV "D"

DIV "Z"

Z/D

Scott Canyon Fire
I-353
33,587 ac.
Day Shift
July 24, 2016

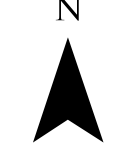
Fair Grounds



Kirk Metzger - 541-815-8028
metzger.kirk@gmail.com
Date: 7/24/2016 Time: 12:57:19 AM

Coordinate System: NAD 1983 Oregon Washington Albers
Projection: Albers
Datum: North American 1983

www.IncidentSupport.com
SCOTT CANYON FIRE



This product is reproduced from geospatial information obtained from multiple public entities. GIS data and product accuracy may vary. They may be developed from sources of differing accuracy, accurate only at certain scales, based on misreading or interpretation, incomplete white being created or revised. GIS products for purposes other than those for which they were created, may yield inaccurate or misleading results.

45°13'30"N 45°14'0"N 45°14'30"N 45°15'0"N 45°15'30"N 45°16'0"N 45°16'30"N 45°17'0"N 45°17'30"N 45°18'0"N 45°18'30"N 45°19'0"N 45°19'30"N 45°20'0"N 45°20'30"N 45°21'0"N 45°21'30"N 45°22'0"N 45°22'30"N 45°23'0"N 45°23'30"N 45°24'0"N 45°24'30"N 45°25'0"N 45°25'30"N 45°26'0"N 45°26'30"N 45°27'0"N 45°27'30"N 45°28'0"N 45°28'30"N 45°29'0"N 45°29'30"N 45°30'0"N 45°30'30"N 45°31'0"N 45°31'30"N 45°32'0"N 45°32'30"N 45°33'0"N 45°33'30"N 45°34'0"N 45°34'30"N