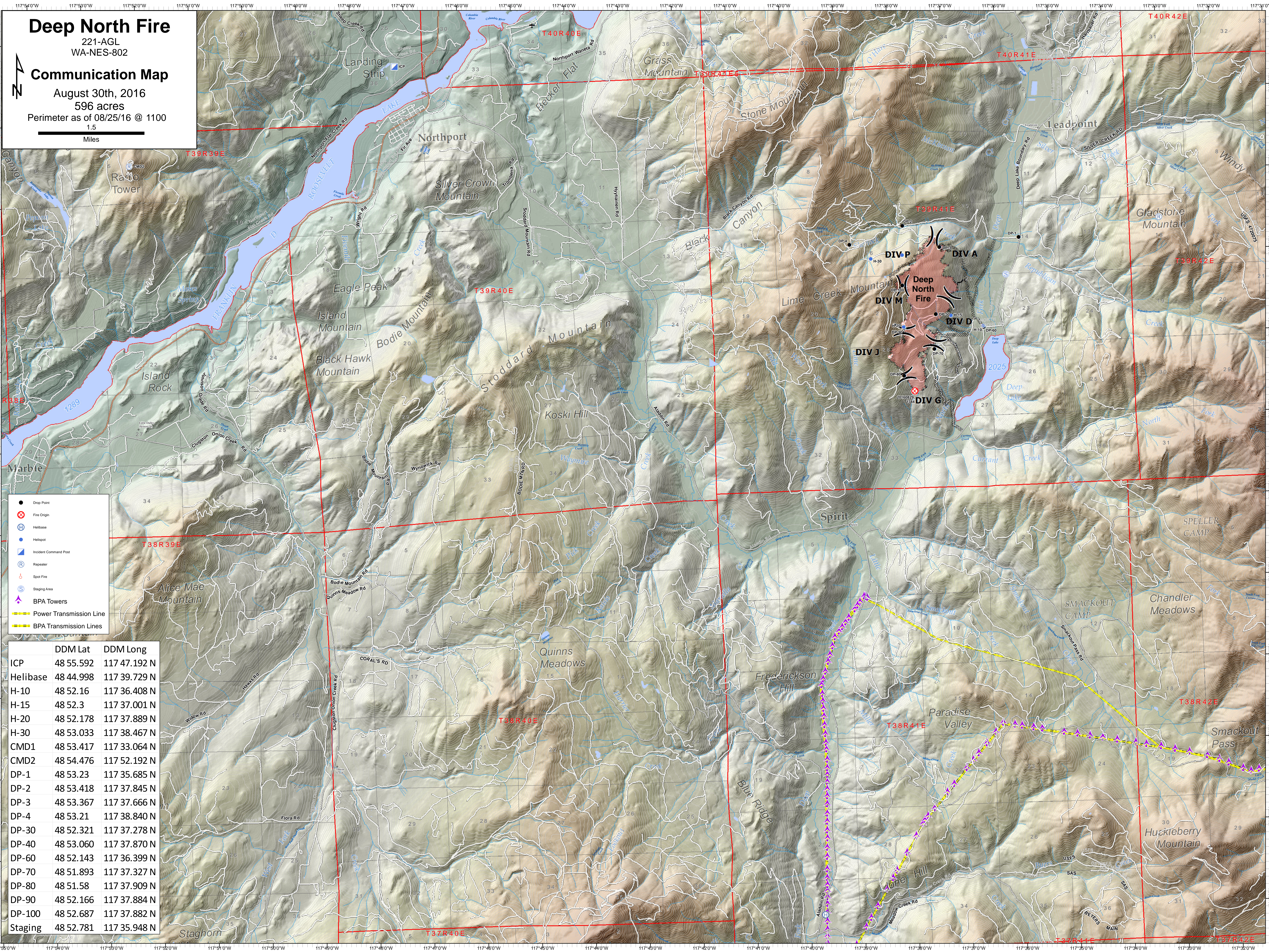


# Deep North Fire

221-AGL  
WA-NES-802

## Communication Map

August 30th, 2016  
596 acres  
Perimeter as of 08/25/16 @ 1100  
1.5  
Miles



- Drop Point
- ⊗ Fire Origin
- Ⓜ Helibase
- Ⓟ Helispot
- Ⓜ Incident Command Post
- Ⓜ Repeater
- Ⓜ Spot Fire
- Ⓜ Staging Area
- Ⓜ BPA Towers
- Power Transmission Line
- BPA Transmission Lines

	DDM Lat	DDM Long
ICP	48 55.592	117 47.192 N
Helibase	48 44.998	117 39.729 N
H-10	48 52.16	117 36.408 N
H-15	48 52.3	117 37.001 N
H-20	48 52.178	117 37.889 N
H-30	48 53.033	117 38.467 N
CMD1	48 53.417	117 33.064 N
CMD2	48 54.476	117 52.192 N
DP-1	48 53.23	117 35.685 N
DP-2	48 53.418	117 37.845 N
DP-3	48 53.367	117 37.666 N
DP-4	48 53.21	117 38.840 N
DP-30	48 52.321	117 37.278 N
DP-40	48 53.060	117 37.870 N
DP-60	48 52.143	117 36.399 N
DP-70	48 51.893	117 37.327 N
DP-80	48 51.58	117 37.909 N
DP-90	48 52.166	117 37.884 N
DP-100	48 52.687	117 37.882 N
Staging	48 52.781	117 35.948 N