



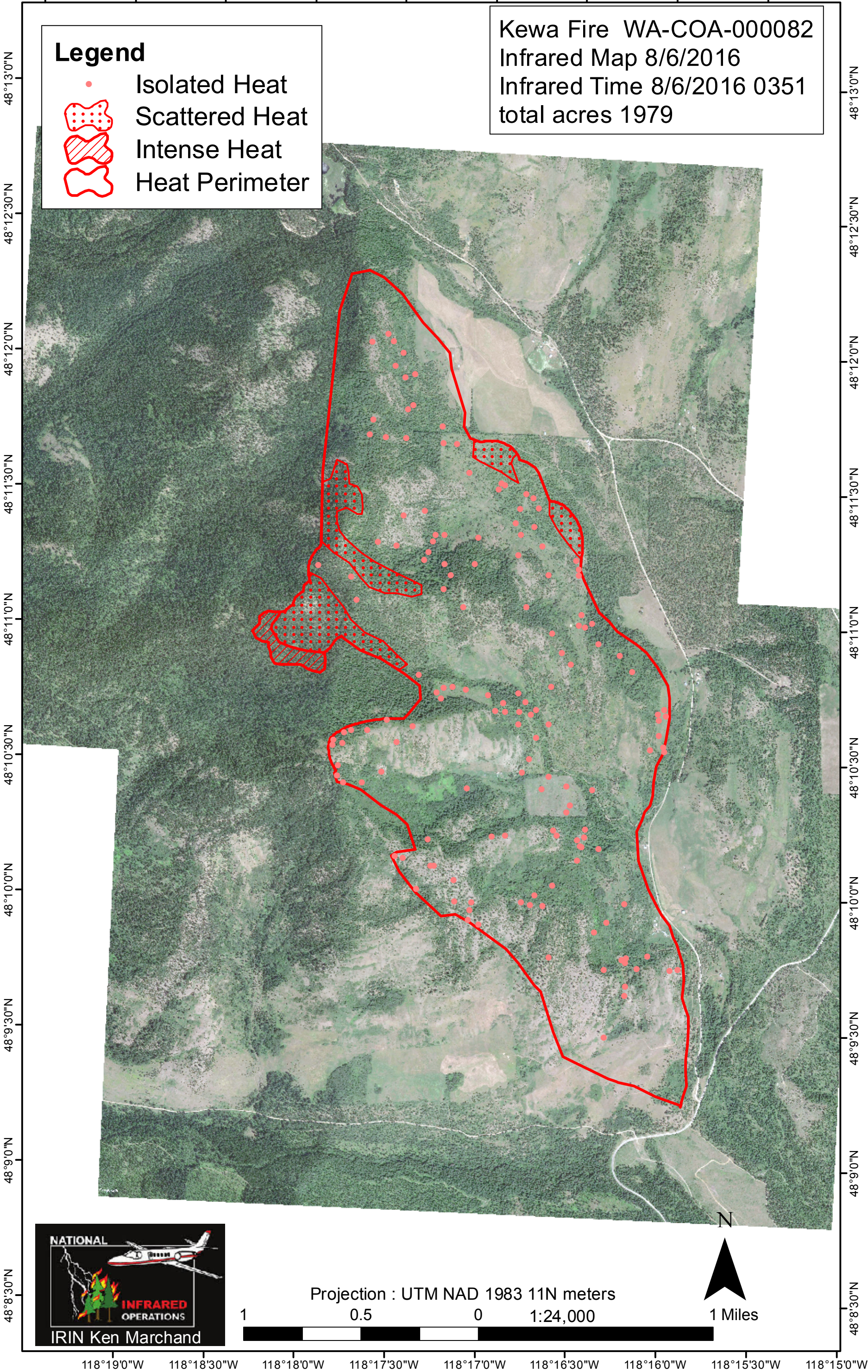


118°19'30"W 118°19'0"W 118°18'30"W 118°18'0"W 118°17'30"W 118°17'0"W 118°16'30"W 118°16'0"W 118°15'30"W

Kewa Fire WA-COA-000082  
Infrared Map 8/6/2016  
Infrared Time 8/6/2016 0351  
total acres 1979

**Legend**

-  Isolated Heat
-  Scattered Heat
-  Intense Heat
-  Heat Perimeter



Projection : UTM NAD 1983 11N meters  
 1 0.5 0 1:24,000 1 Miles



48°8'30"N

48°8'30"N

118°19'0"W 118°18'30"W 118°18'0"W 118°17'30"W 118°17'0"W 118°16'30"W 118°16'0"W 118°15'30"W 118°15'0"W