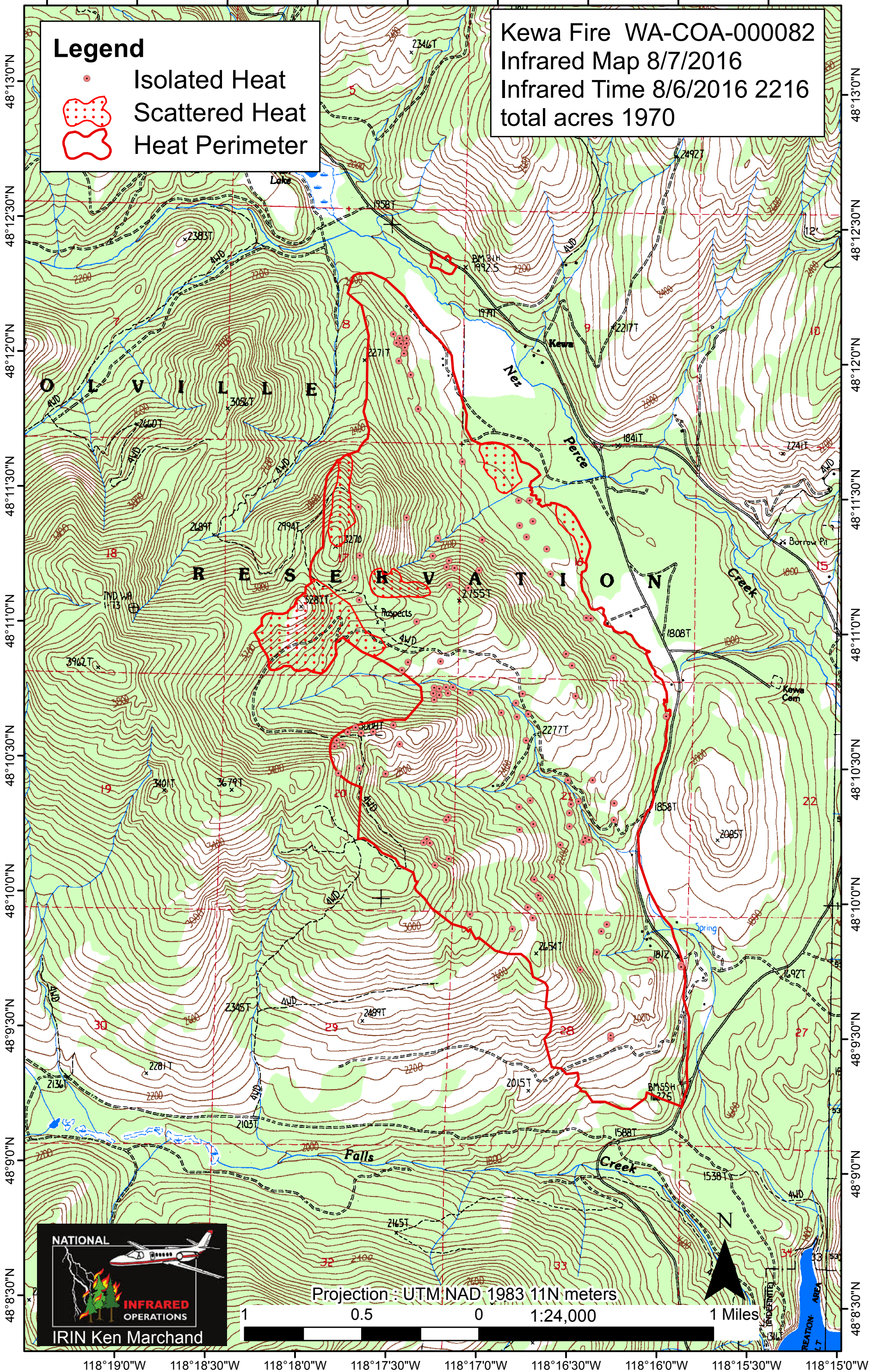


118°19'30"W 118°19'0"W 118°18'30"W 118°18'0"W 118°17'30"W 118°17'0"W 118°16'30"W 118°16'0"W 118°15'30"W

Legend

-  Isolated Heat
-  Scattered Heat
-  Heat Perimeter

Kewa Fire WA-COA-000082
Infrared Map 8/7/2016
Infrared Time 8/6/2016 2216
total acres 1970



Projection : UTM NAD 1983 11N meters

1 0.5 0 1:24,000 1 Miles

118°19'0"W 118°18'30"W 118°18'0"W 118°17'30"W 118°17'0"W 118°16'30"W 118°16'0"W 118°15'30"W