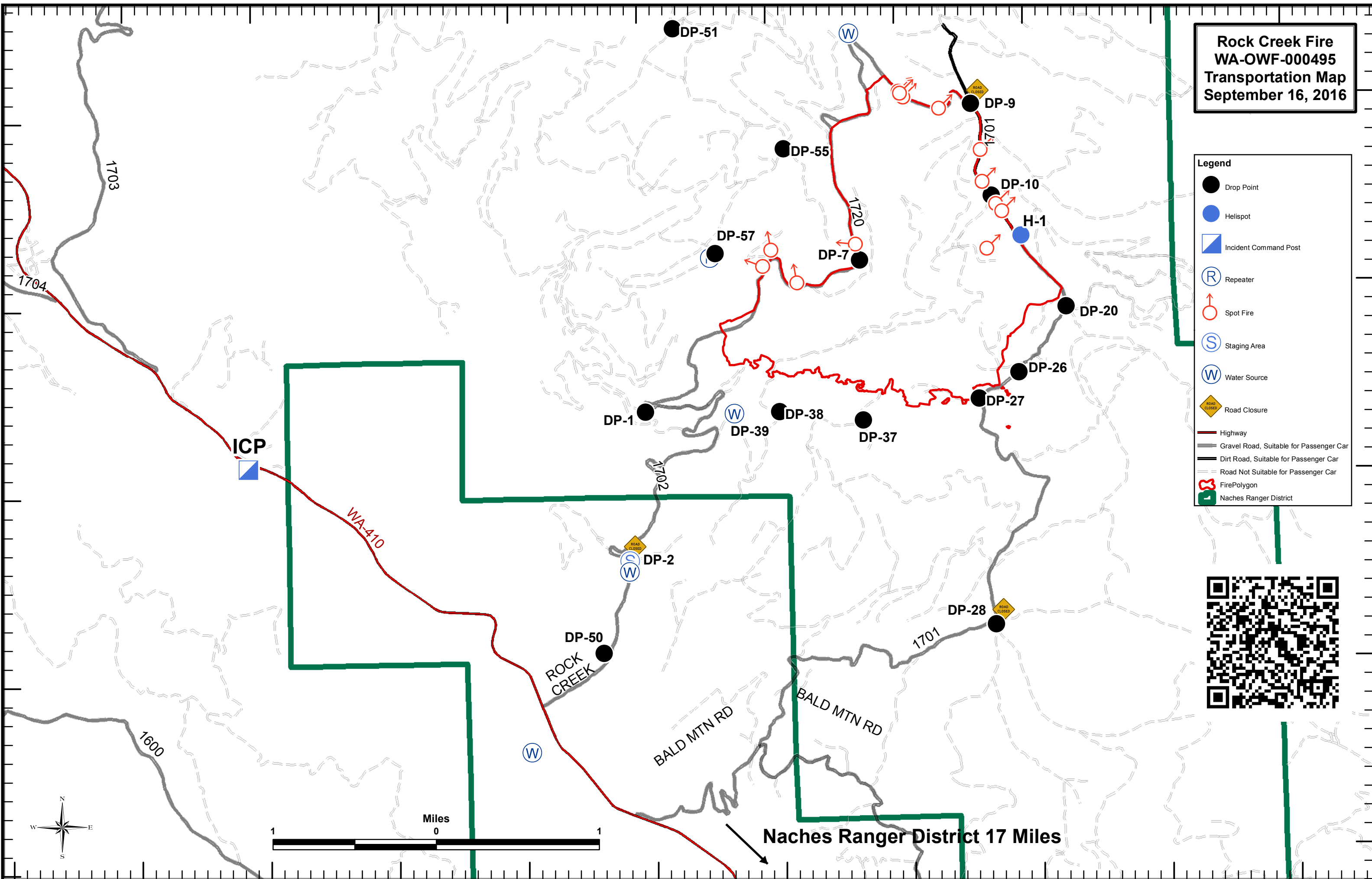


121°2'W 121°1'W 121°0'W 120°59'W 120°58'W 120°57'W 120°56'W 120°55'W 120°54'W 120°53'W

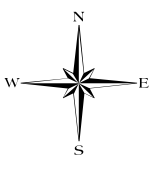
Rock Creek Fire WA-OWF-00495 Transportation Map September 16, 2016

Legend

- Drop Point
- Helispot
- ▣ Incident Command Post
- Ⓜ Repeater
- Ⓢ Spot Fire
- Ⓢ Staging Area
- Ⓜ Water Source
- ⚠ Road Closure
- Highway
- Gravel Road, Suitable for Passenger Car
- Dirt Road, Suitable for Passenger Car
- Road Not Suitable for Passenger Car
- 🔥 Fire Polygon
- 🟩 Naches Ranger District



46°56'N
46°55'N
46°54'N
46°53'N
46°52'N



Naches Ranger District 17 Miles