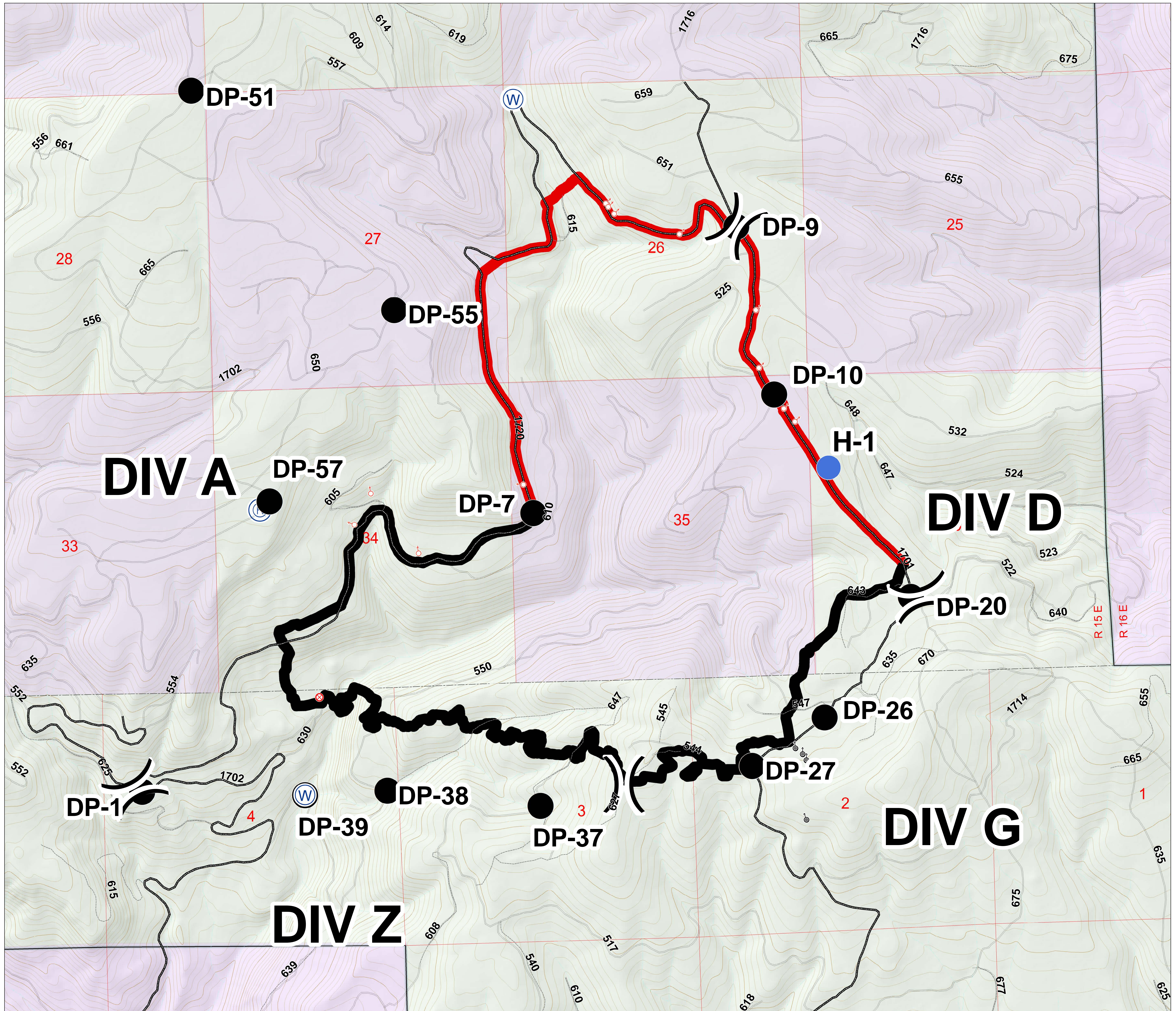


Rock Creek Fire
Briefing
WA-OWF-000495
1,383 Acres
September 17, 2016

Legend

- Fire Containment
 - No (Red line)
 - Yes (Black line)
- Drop Point (Black circle)
- Fire Origin (Red circle with X)
- Helispot (Blue circle)
- Repeater (Blue circle with R)
- Spot Fire (Red circle with dot)
- Water Source (Blue circle with W)
- Spot Fire (Small red circle with dot)
- Division (Black line with parenthesis)
- Road Closure (Yellow diamond with X)
- Streams (Blue line)
- DNR Jurisdiction (Purple shaded area)
- Forest Service Jurisdiction (Green shaded area)
- 1 - BASIC CUSTODIAL CARE (CLOSED) (Dashed line)
- 2 - HIGH CLEARANCE VEHICLES (Thin solid line)
- 3 - SUITABLE FOR PASSENGER CARS (Thick solid line)



NAD 1983
Zone 10

