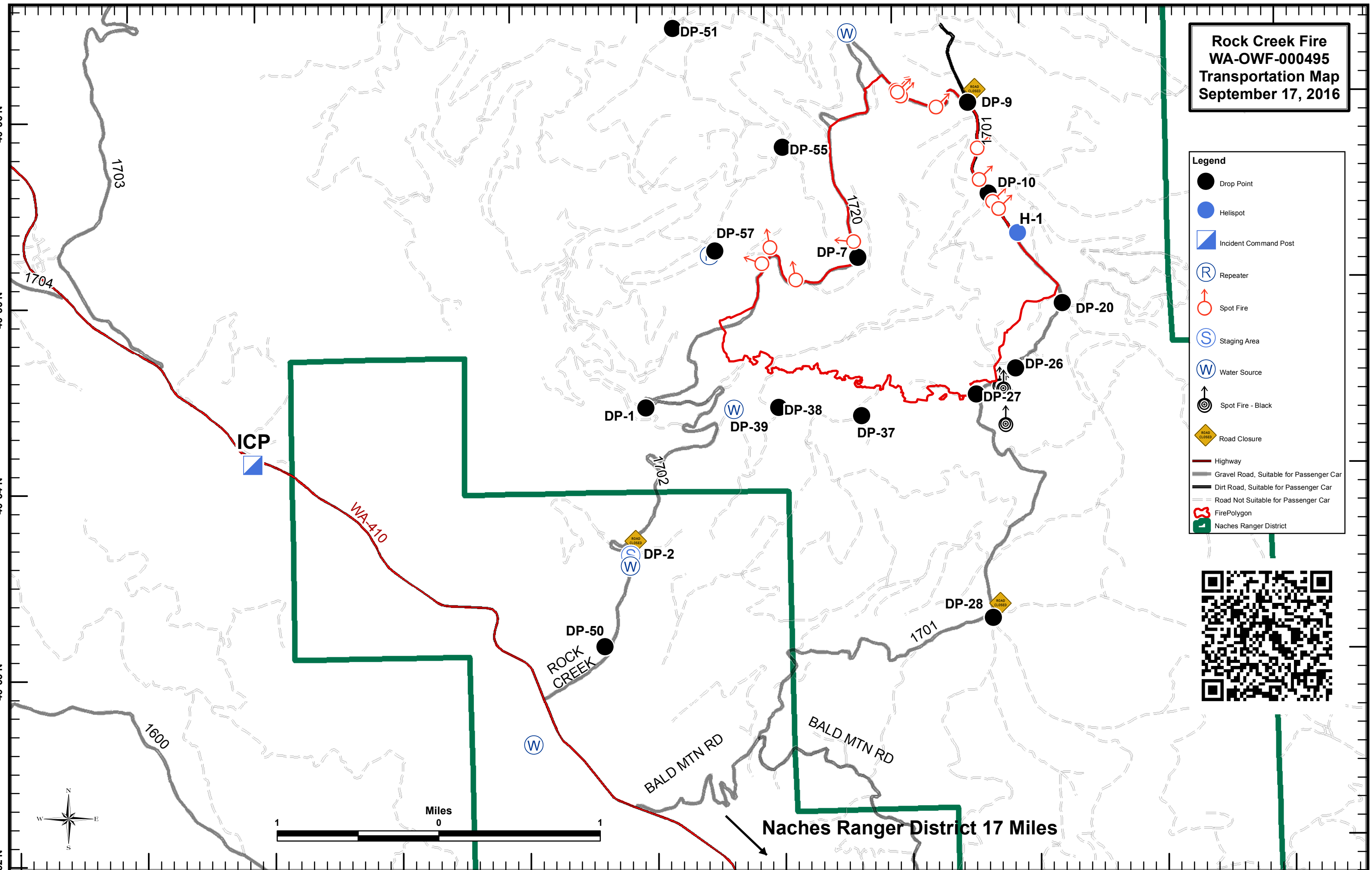


121°2'W 121°1'W 121°0'W 120°59'W 120°58'W 120°57'W 120°56'W 120°55'W 120°54'W 120°53'W

Rock Creek Fire WA-OWF-00495 Transportation Map September 17, 2016

- Legend**
- Drop Point
 - Helispot
 - ▣ Incident Command Post
 - Ⓜ Repeater
 - ⊕ Spot Fire
 - Ⓢ Staging Area
 - Ⓜ Water Source
 - ⊙ Spot Fire - Black
 - ⚠ Road Closure
 - Highway
 - Gravel Road, Suitable for Passenger Car
 - Dirt Road, Suitable for Passenger Car
 - Road Not Suitable for Passenger Car
 - 🔥 Fire Polygon
 - 👤 Naches Ranger District



ICP

WA-410

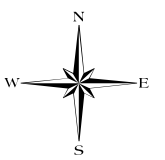
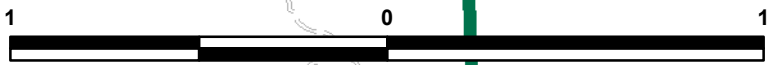
DP-50
ROCK CREEK

BALD MTN RD

BALD MTN RD

Naches Ranger District 17 Miles

Miles



46°56'N

46°55'N

46°54'N

46°53'N

46°52'N

1703

1704

1600

1702

1701

DP-51

DP-55

DP-9

DP-10

H-1

DP-20

DP-26

DP-27

DP-1

DP-57

DP-7

DP-38

DP-37

DP-39

DP-2

DP-28

W

W

W

W

W

Legend

Drop Point

Helispot

Incident Command Post

Repeater

Spot Fire

Staging Area

Water Source

Spot Fire - Black

Road Closure

Highway

Gravel Road, Suitable for Passenger Car

Dirt Road, Suitable for Passenger Car

Road Not Suitable for Passenger Car

Fire Polygon

Naches Ranger District