

Rock Creek Fire

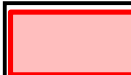
WA-OWF-000495

PILOT Map

09/17/2016



Declination 15.8° E



Fire Area



Watercourse



Helispot



Spot Fire



Water Source

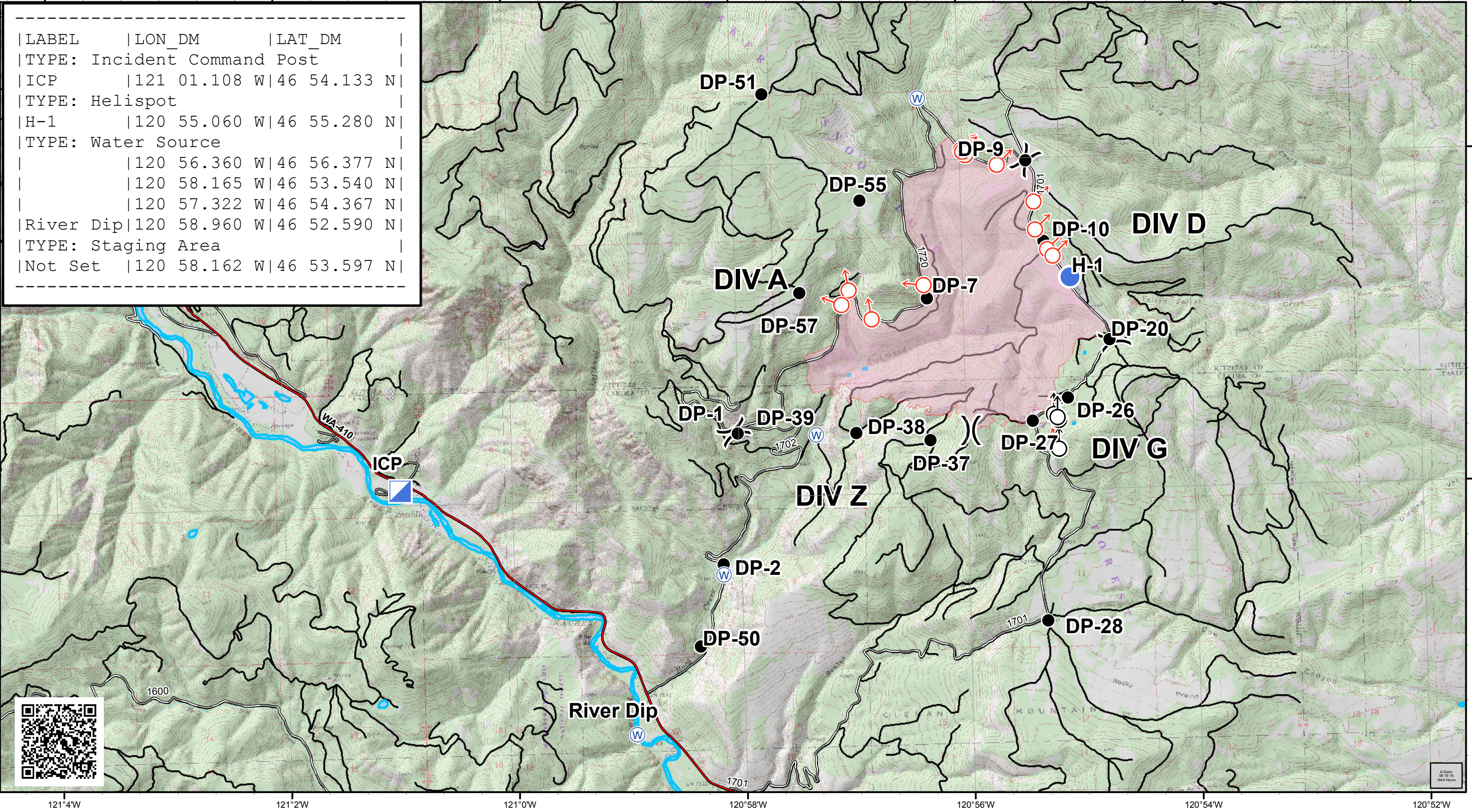


Drop Point



Spot Fire - black

LABEL	LON_DM	LAT_DM
TYPE: Incident Command Post		
ICP	121 01.108 W	46 54.133 N
TYPE: Helispot		
H-1	120 55.060 W	46 55.280 N
TYPE: Water Source		
	120 56.360 W	46 56.377 N
	120 58.165 W	46 53.540 N
	120 57.322 W	46 54.367 N
River Dip	120 58.960 W	46 52.590 N
TYPE: Staging Area		
Not Set	120 58.162 W	46 53.597 N



A.Docs
09 16 16
1044 Hours