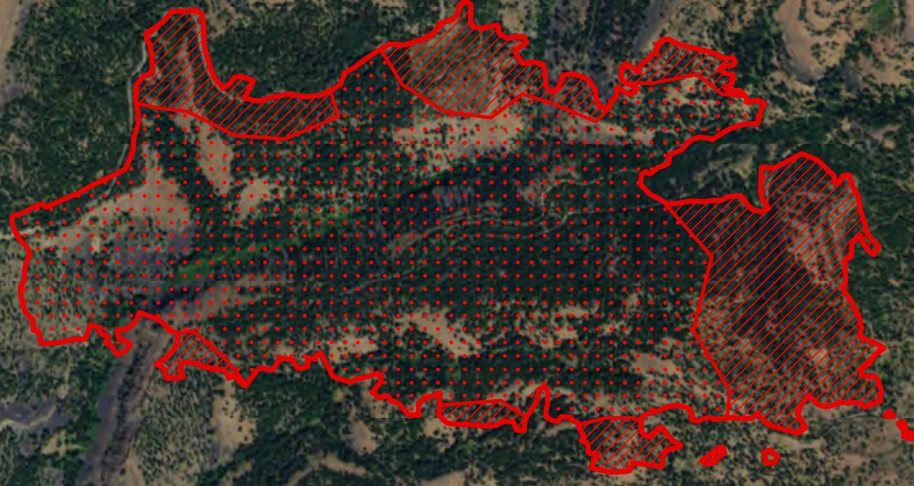





120°59'W 120°58'W 120°57'W 120°56'W 120°55'W 120°54'W 120°53'W 120°52'W

46°56'N
46°55'N
46°54'N
46°53'N

Rock Creek Fire
WA-OWF-000495
Heat Acres: 616
Infrared Interpretation
Imagery Date:
2016/09/12 0012 Hrs



-  Heat Perimeter
 -  Intense Heat Areas
 -  Isolated Heat Sources
- NAD 1983 UTM Zone 10N



IRIN: Kyle Felker
Map produced:
9/12/2016 0136 hrs

120°59'W 120°58'W 120°57'W 120°56'W 120°55'W 120°54'W 120°53'W 120°52'W