

120°58'W

120°57'W

120°56'W

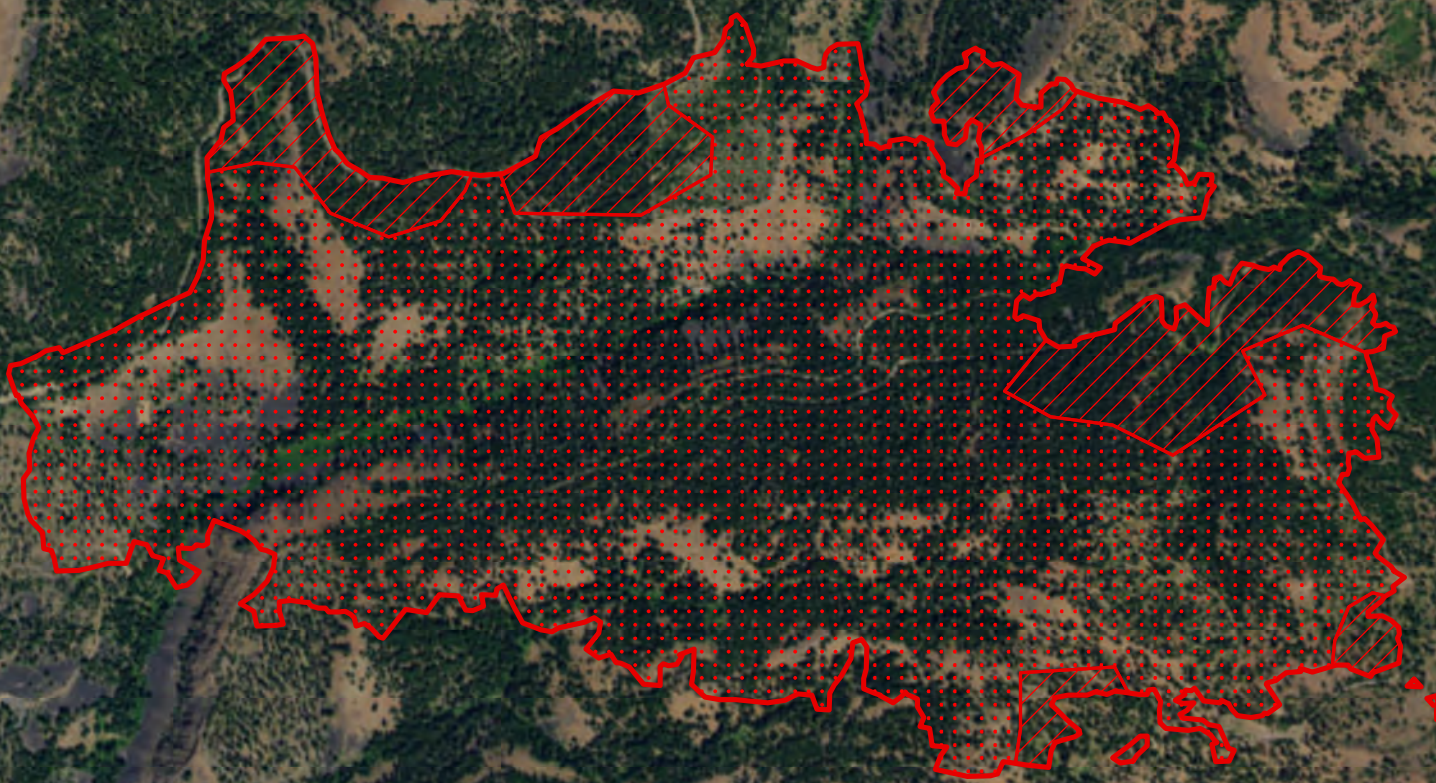
120°55'W

120°54'W

Rock Creek Fire
 WA-OWF-000495
 Heat Acres: 641
 Infrared Interpretation
 Imagery Date:
 2016/09/13 0006 Hrs



1:15,000



46°55'N

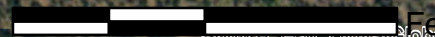
46°55'N

46°54'N




46°54'N

IRIN: Kyle Felker
 Map produced:
 9/13/2016 0054 hrs

0 625 1,250 2,500
 Feet



Community

-  Heat Perimeter
 -  Intense Heat Areas
 -  Isolated Heat Sources
- NAD 1983 UTM Zone 10N

120°58'W

120°57'W

120°56'W

120°55'W

120°54'W