

120°58'W

120°57'W

120°56'W

120°55'W

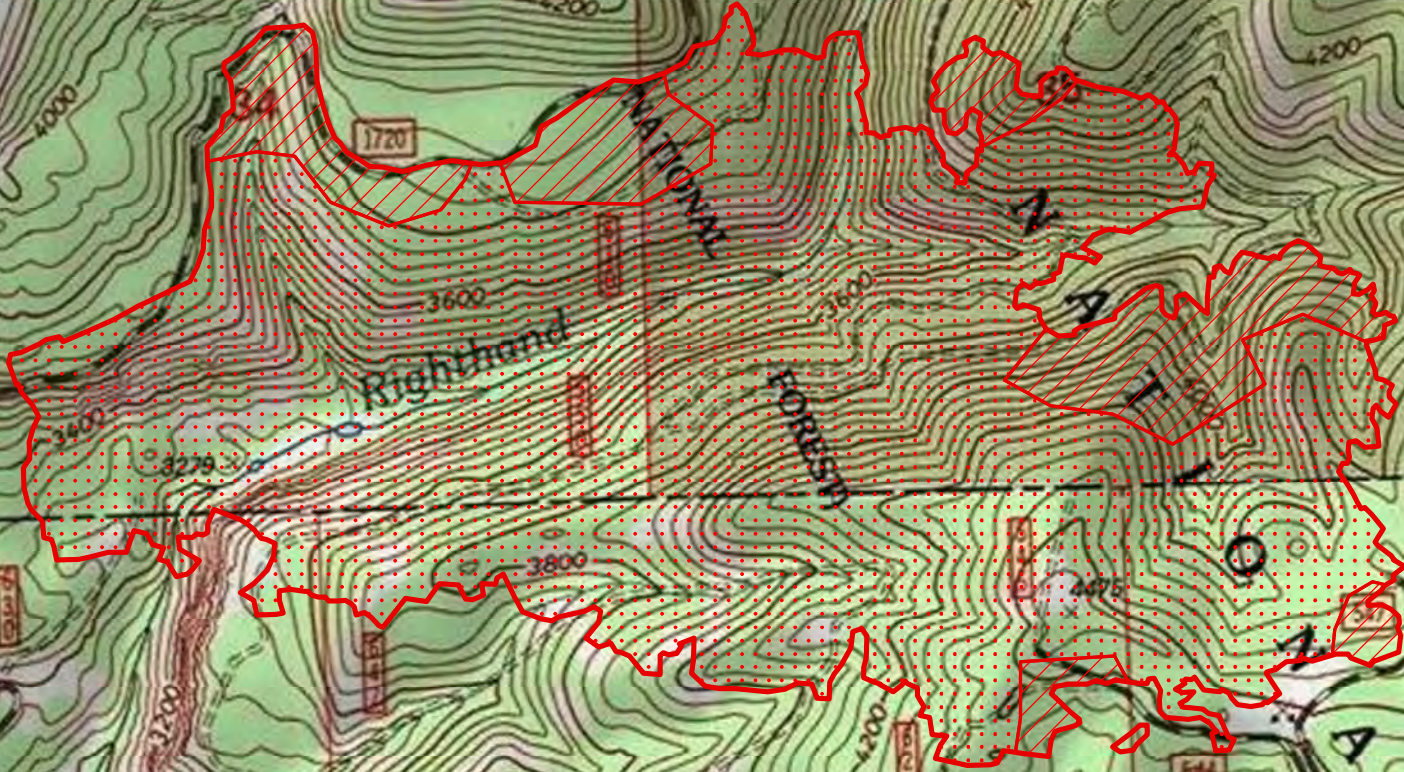
120°54'W

Rock Creek Fire
 WA-OWF-000495
 Heat Acres: 641
 Infrared Interpretation

Imagery Date:
 2016/09/13 0006 Hrs



1:15,000



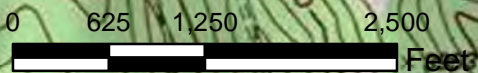
46°55'N




46°55'N

46°54'N

46°54'N

IRIN: Kyle Felker
 Map produced:
 9/13/2016 0053 hrs



-  Heat Perimeter
-  Intense Heat Areas
-  Isolated Heat Sources

NAD 1983 UTM Zone 10N

Copyright © 2013 National Geographic Society, i-cubed

120°58'W

120°57'W

120°56'W

120°55'W

120°54'W