

120°58'W 120°57'W 120°56'W 120°55'W

Rock Creek Fire
WA-OWF-000495
Heat Acres: 1,344
Infrared Interpretation
Imagery Date:
2016/09/15 2310 Hrs

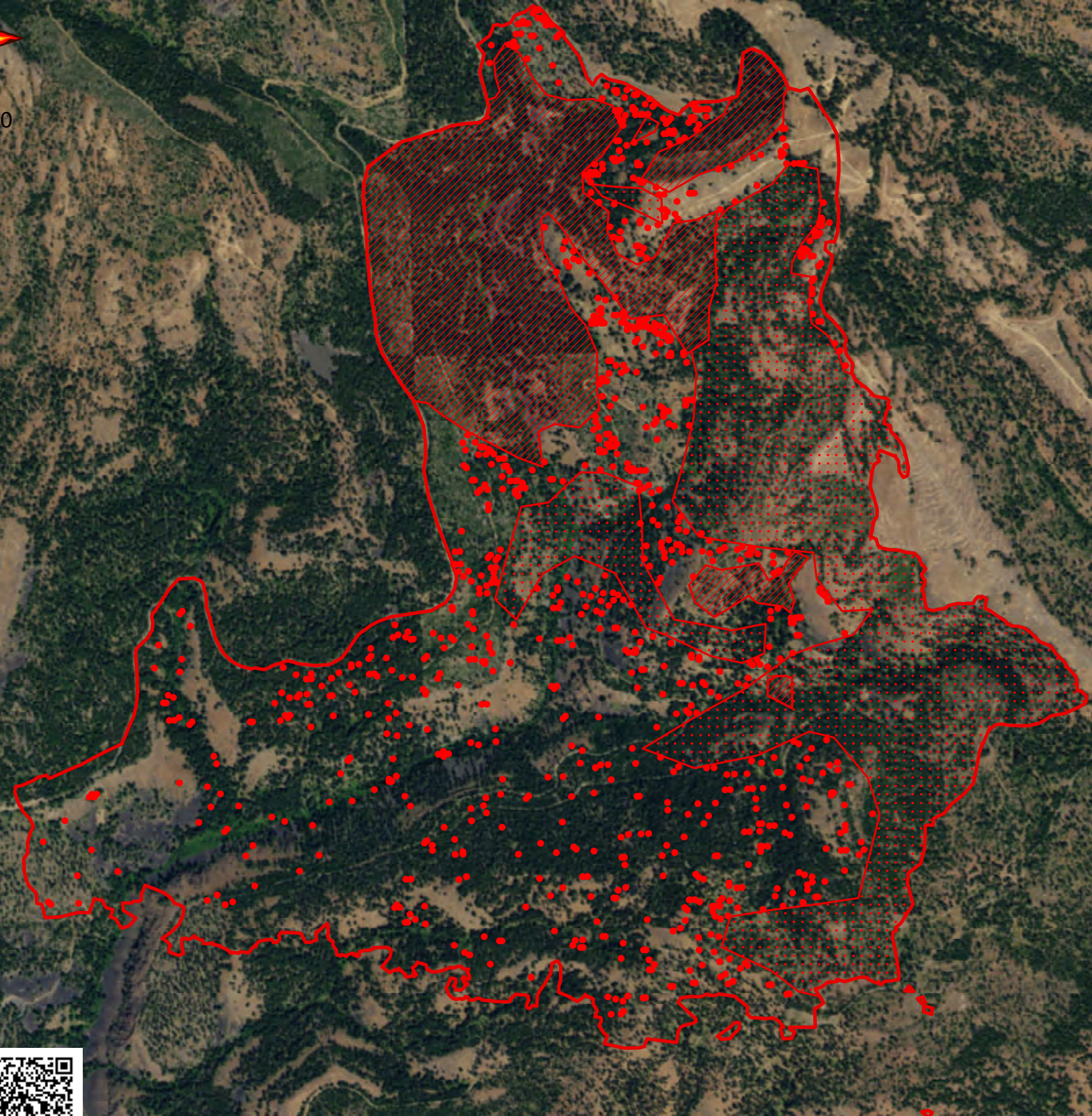






46°56'N

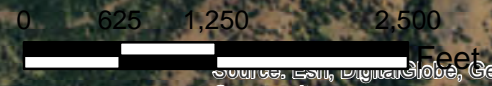
46°56'N

46°55'N

46°55'N



-  Heat Perimeter
 -  Intense Heat Areas
 -  Scattered Heat Areas
 -  Isolated Heat Sources
- NAD 1983 UTM Zone 10N



IRIN: Kyle Felker mapit400@gmail.com
Map produced:
9/16/2016 0140 hrs

120°58'W 120°57'W 120°56'W 120°55'W

Source: Esri, DigitalGlobe, GeoEye, Earthstar Geographics, CNES/Airbus DS, USDA, USGS, AEX, Getmapping, Aerogrid, IGN Community