

# Spokane Complex Fire

WA-NES-814

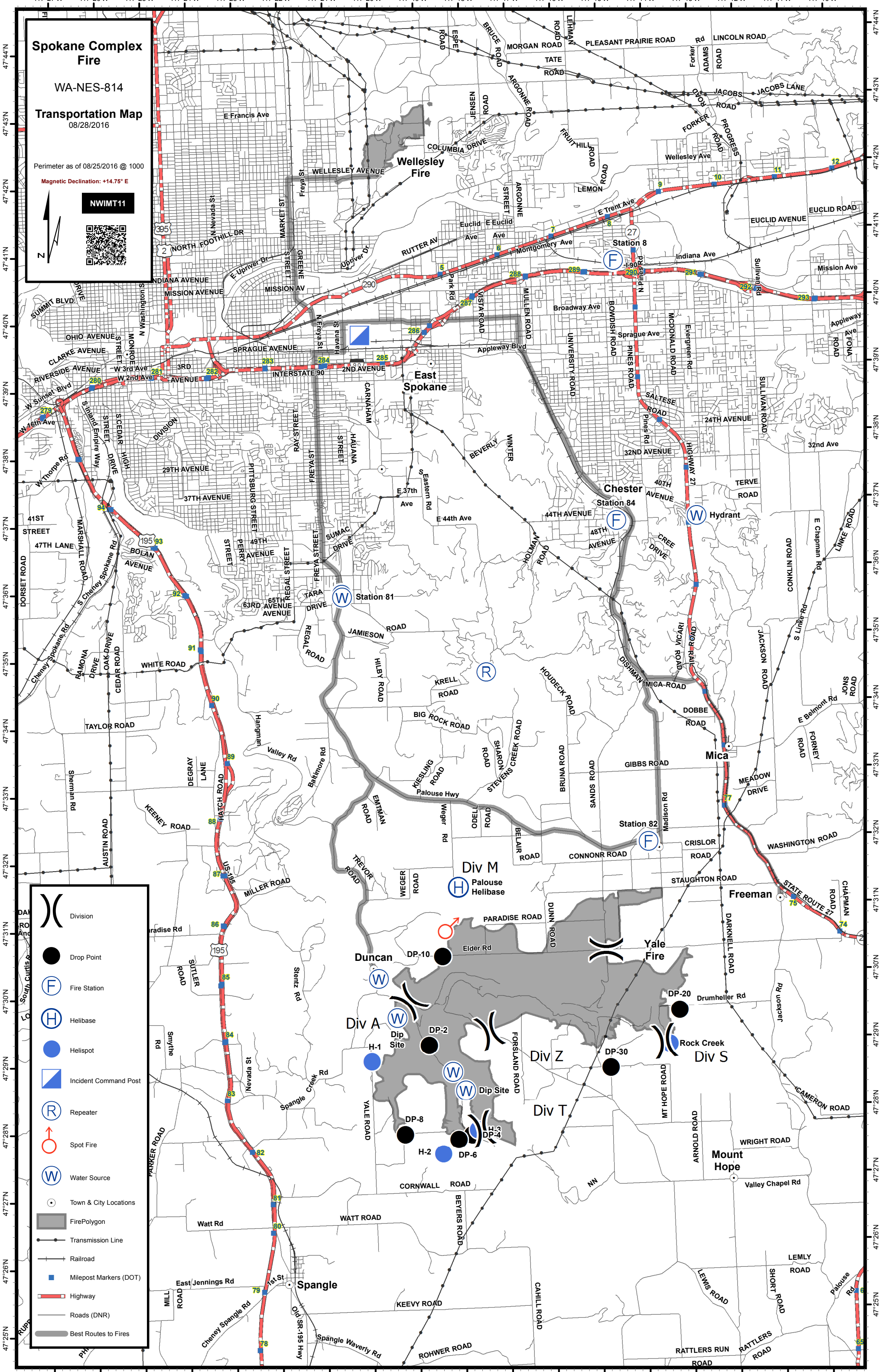
## Transportation Map

08/28/2016

Perimeter as of 08/25/2016 @ 1000

Magnetic Declination: +14.75° E

NWIMT11



- ( ) Division
- Drop Point
- (F) Fire Station
- (H) Helibase
- Helispot
- ▣ Incident Command Post
- (R) Repeater
- ♂ Spot Fire
- (W) Water Source
- Town & City Locations
- Fire Polygon
- Transmission Line
- Railroad
- Milepost Markers (DOT)
- Highway
- Roads (DNR)
- Best Routes to Fires