

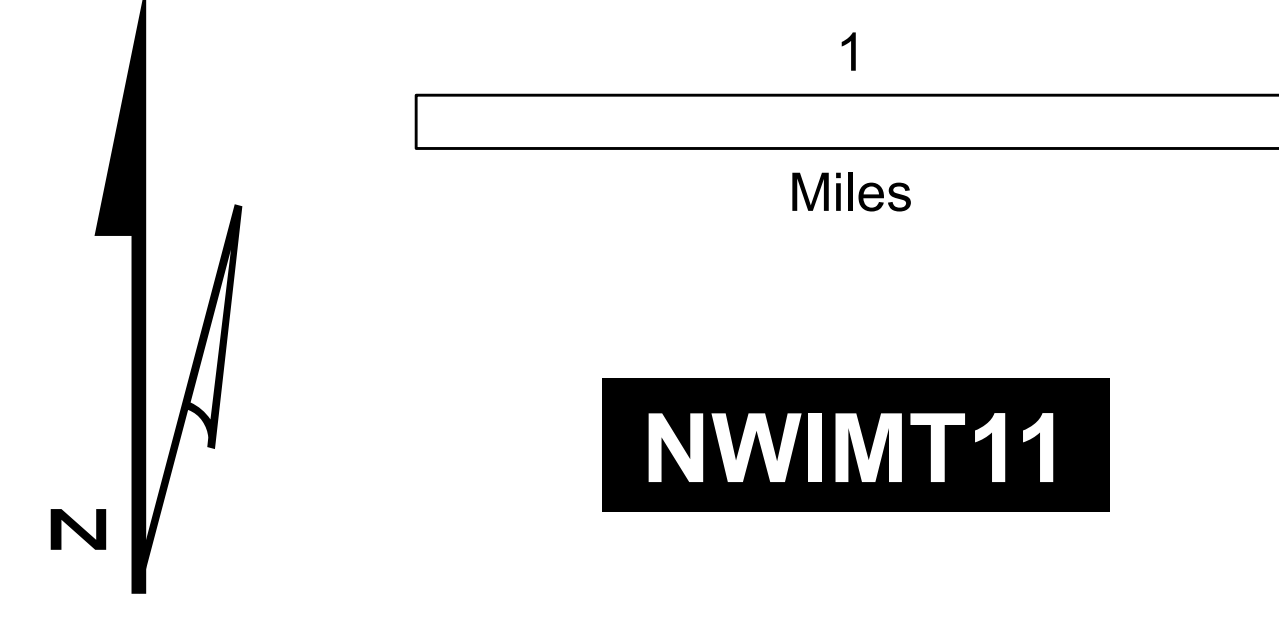
Spokane Complex Yale Fire WA-NES-814 Briefing Map

08/28/2016

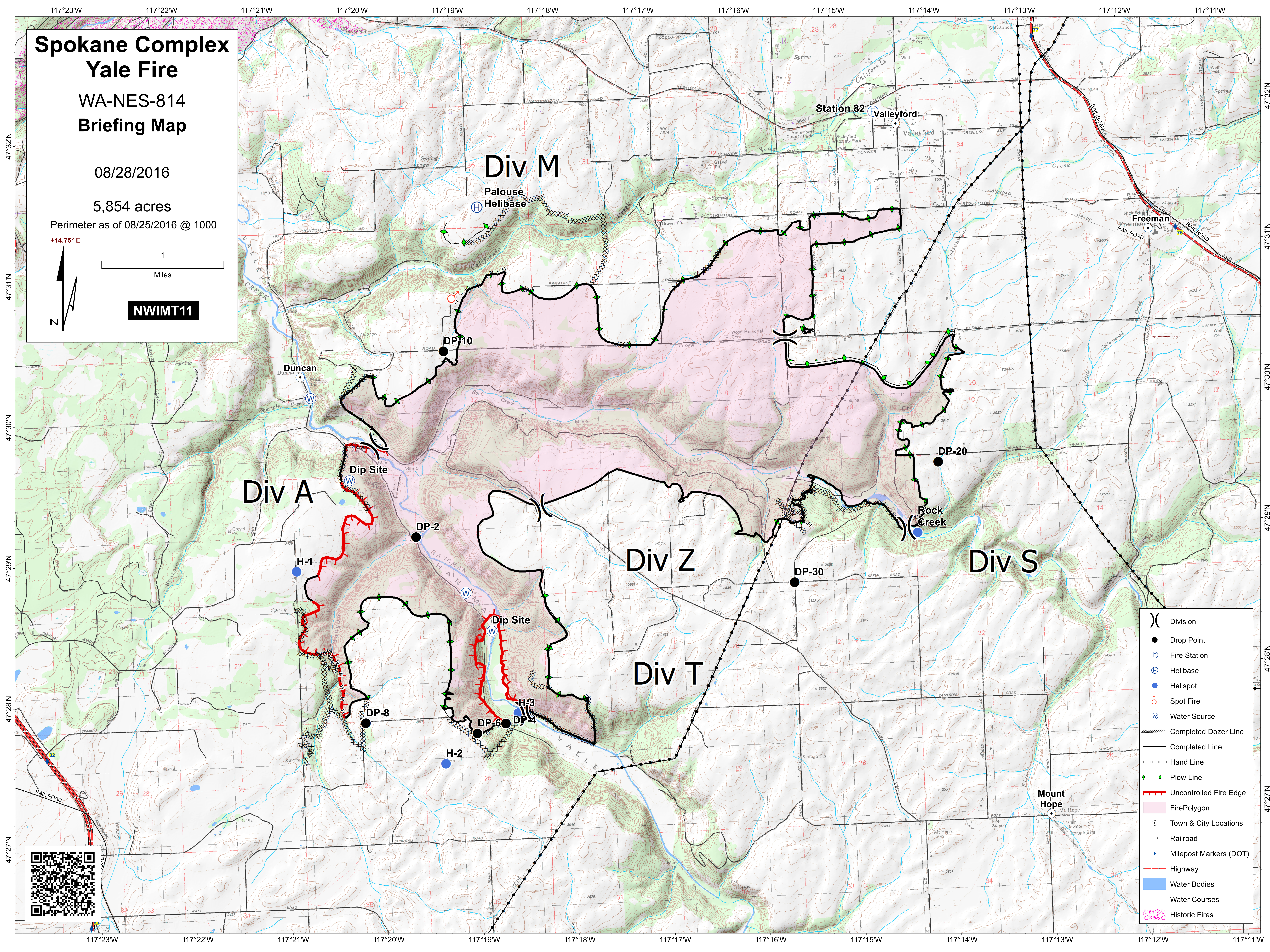
5,854 acres

Perimeter as of 08/25/2016 @ 1000

+14.75° E



NWIMT11



- () Division
- Drop Point
- Ⓜ Fire Station
- Ⓜ Helibase
- Helispot
- Ⓜ Spot Fire
- Ⓜ Water Source
- Ⓜ Completed Dozer Line
- Completed Line
- · · · · Hand Line
- Plow Line
- Uncontrolled Fire Edge
- FirePolygon
- Town & City Locations
- Railroad
- Milepost Markers (DOT)
- Highway
- Water Bodies
- Water Courses
- Historic Fires

