

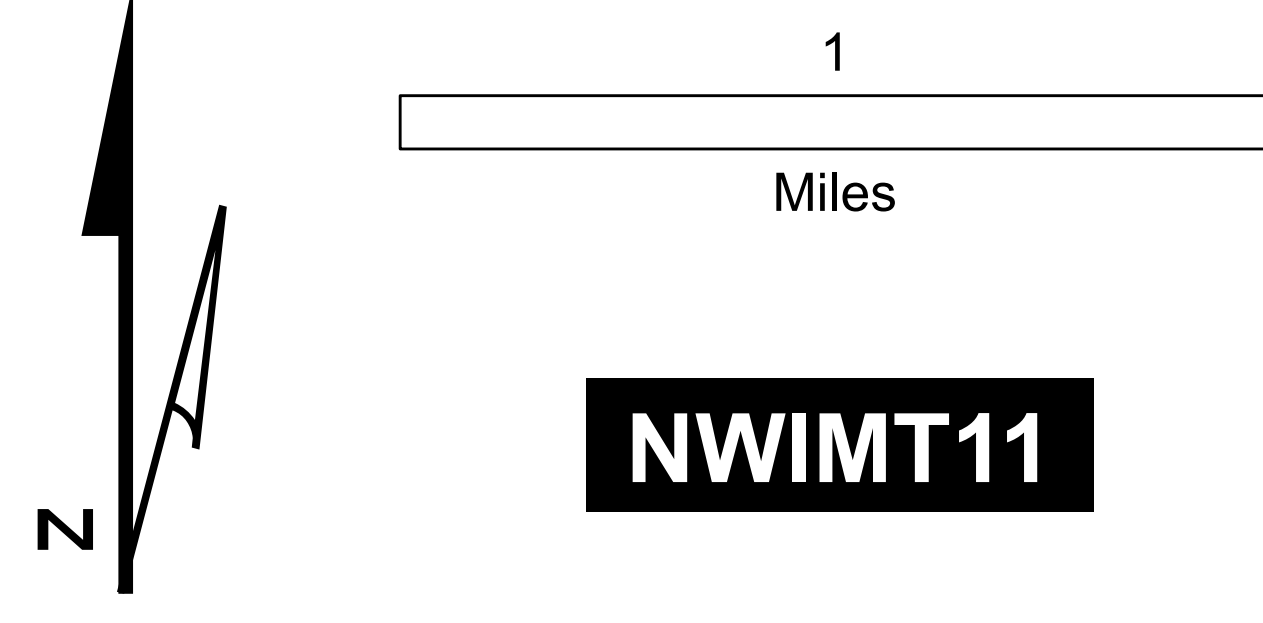
Spokane Complex Yale Fire WA-NES-814 Repair Plan Map

08/28/2016

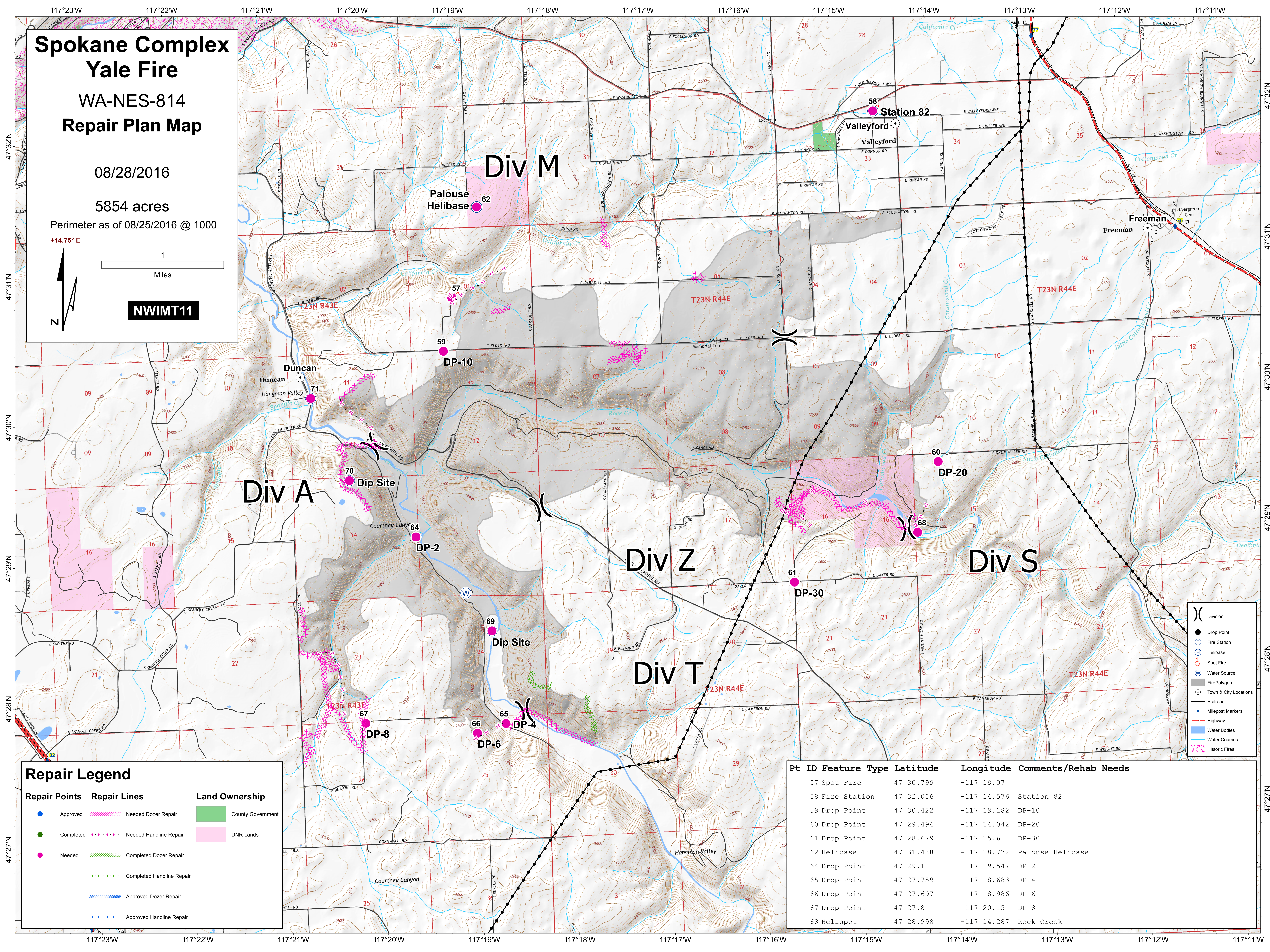
5854 acres

Perimeter as of 08/25/2016 @ 1000

+14.75° E



NWIMT11



Div A

Div M

Div Z

Div T

Div S

Repair Legend

| Repair Points | Repair Lines | Land Ownership |
|---------------|-----------------------------|---------------------|
| ● Approved | ▨ Needed Dozer Repair | ■ County Government |
| ● Completed | ▨ Needed Handline Repair | ■ DNR Lands |
| ● Needed | ▨ Completed Dozer Repair | |
| | ▨ Completed Handline Repair | |
| | ▨ Approved Dozer Repair | |
| | ▨ Approved Handline Repair | |

| | |
|-----|-----------------------|
| () | Division |
| ● | Drop Point |
| ⦿ | Fire Station |
| ⊕ | Helibase |
| ⊙ | Spot Fire |
| ⊕ | Water Source |
| ⊕ | FirePolygon |
| ⊕ | Town & City Locations |
| — | Railroad |
| — | Milepost Markers |
| — | Highway |
| — | Water Bodies |
| — | Water Courses |
| ▨ | Historic Fires |

| Pt ID | Feature | Type | Latitude | Longitude | Comments/Rehab Needs |
|-------|--------------|------|-----------|-------------|----------------------|
| 57 | Spot Fire | | 47 30.799 | -117 19.07 | |
| 58 | Fire Station | | 47 32.006 | -117 14.576 | Station 82 |
| 59 | Drop Point | | 47 30.422 | -117 19.182 | DP-10 |
| 60 | Drop Point | | 47 29.494 | -117 14.042 | DP-20 |
| 61 | Drop Point | | 47 28.679 | -117 15.6 | DP-30 |
| 62 | Helibase | | 47 31.438 | -117 18.772 | Palouse Helibase |
| 64 | Drop Point | | 47 29.11 | -117 19.547 | DP-2 |
| 65 | Drop Point | | 47 27.759 | -117 18.683 | DP-4 |
| 66 | Drop Point | | 47 27.697 | -117 18.986 | DP-6 |
| 67 | Drop Point | | 47 27.8 | -117 20.15 | DP-8 |
| 68 | Helispot | | 47 28.998 | -117 14.287 | Rock Creek |