

117°22'0"W 117°21'0"W 117°20'0"W 117°19'0"W 117°18'0"W 117°17'0"W 117°16'0"W 117°15'0"W 117°14'0"W

Yale - WA-NES-000808

Infrared Map

Flown August 25, 2016 @ 0157 hours PDT

IR Interpreted Size: 5,886 acres

- Isolated Heat Sources
- Scattered Heat
- Intense Heat
- Heat Perimeter



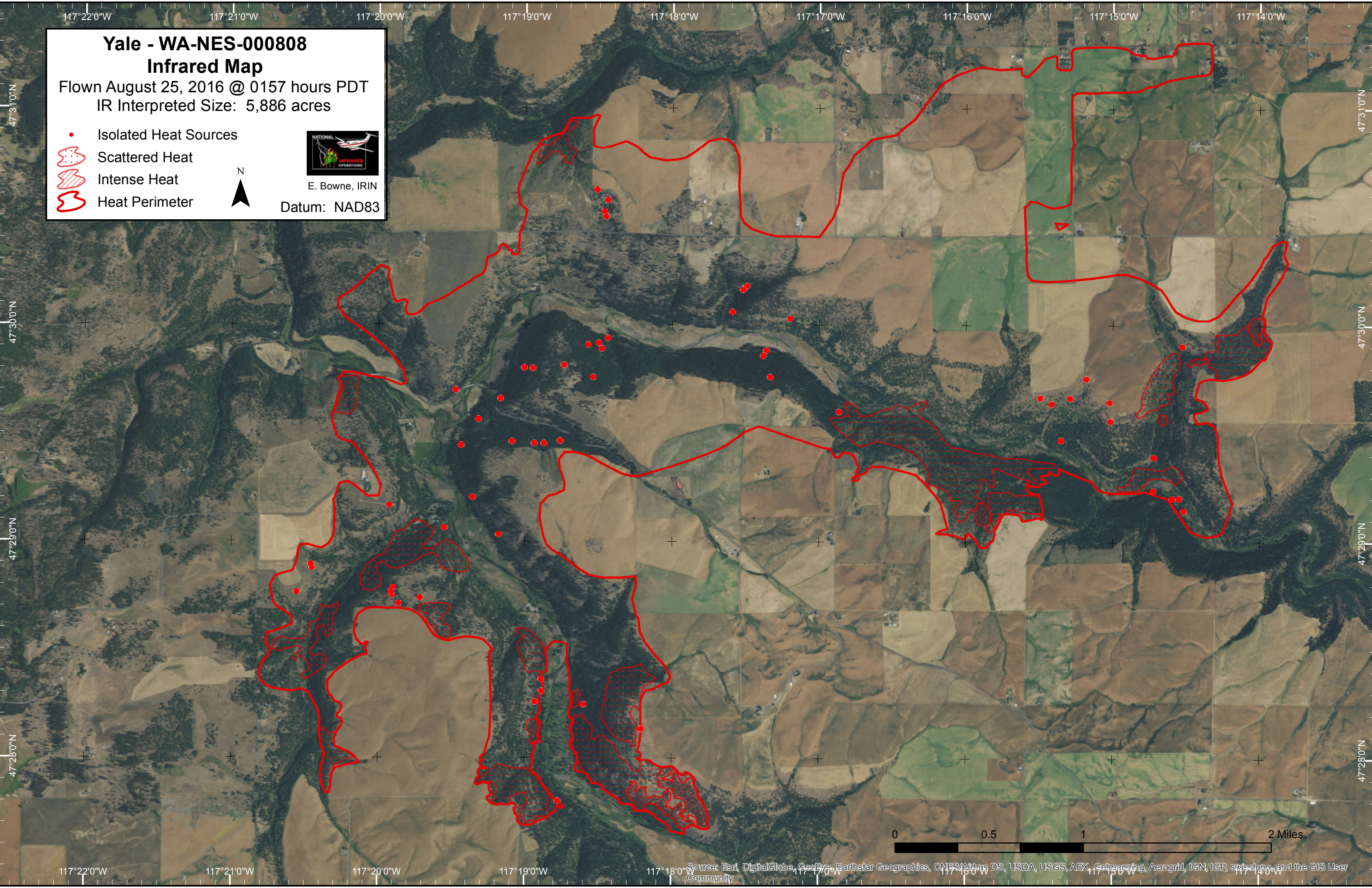
E. Bowne, IRIN

Datum: NAD83



47°31'0"N
47°30'0"N
47°29'0"N
47°28'0"N

47°31'0"N
47°30'0"N
47°29'0"N
47°28'0"N



117°22'0"W 117°21'0"W 117°20'0"W 117°19'0"W 117°18'0"W 117°17'0"W 117°16'0"W 117°15'0"W

Source: Esri, DigitalGlobe, GeoEye, Earthstar Geographics, CNES/Airbus DS, USDA, USGS, AEX, Geomatics, Aerogrid, IGN, IGP, swisstopo, and the GIS User Community