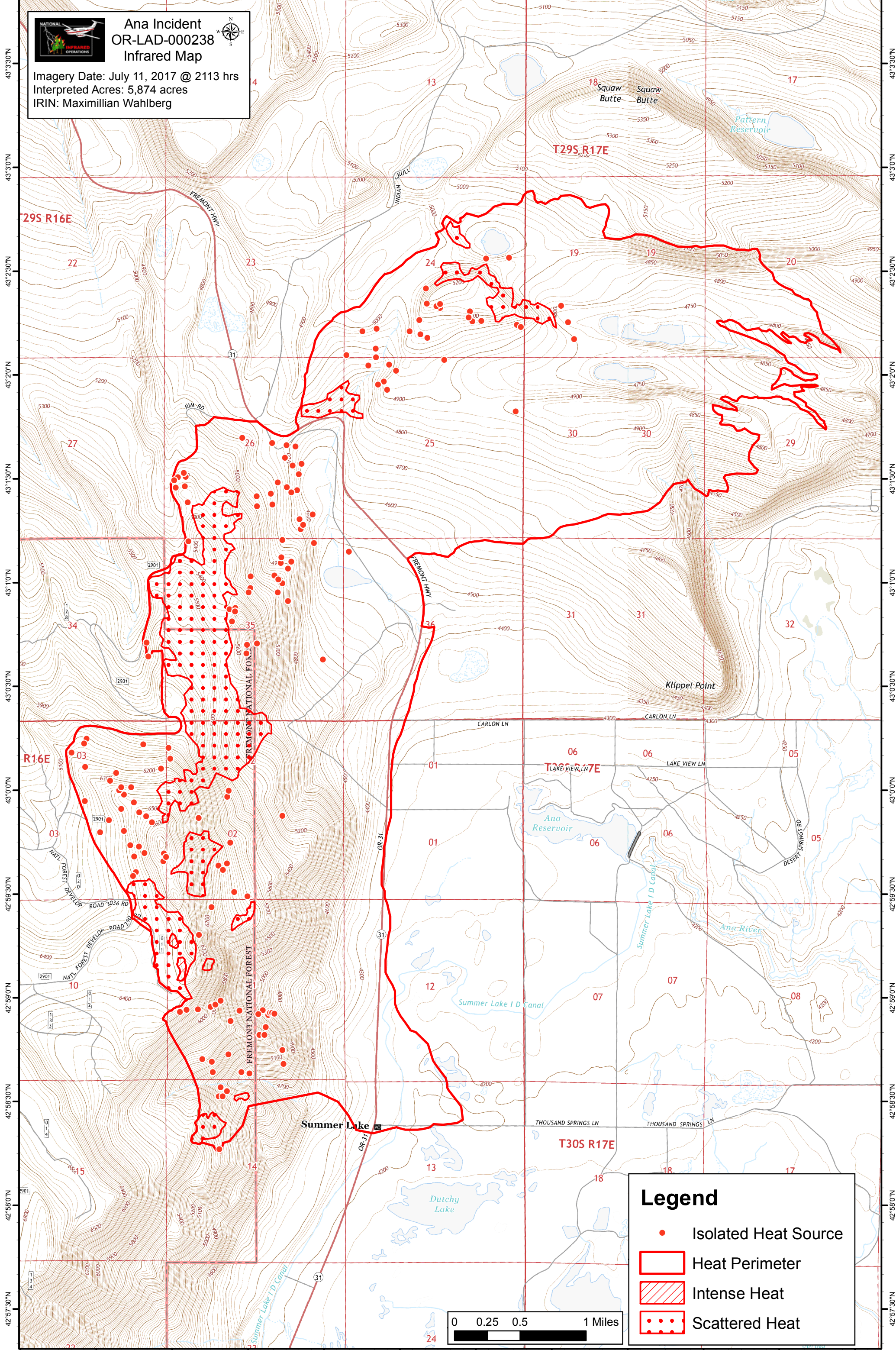


120°49'0"W 120°48'30"W 120°48'0"W 120°47'30"W 120°47'0"W 120°46'30"W 120°46'0"W 120°45'30"W 120°45'0"W 120°44'30"W 120°44'0"W 120°43'30"W



Ana Incident
OR-LAD-000238
Infrared Map
Imagery Date: July 11, 2017 @ 2113 hrs
Interpreted Acres: 5,874 acres
IRIN: Maximillian Wahlberg

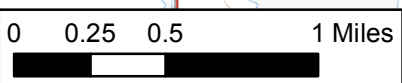


43°3'30"N
43°3'0"N
43°2'30"N
43°2'0"N
43°1'30"N
43°1'0"N
43°0'30"N
43°0'0"N
42°59'30"N
42°59'0"N
42°58'30"N
42°58'0"N
42°57'30"N

43°3'30"N
43°3'0"N
43°2'30"N
43°2'0"N
43°1'30"N
43°1'0"N
43°0'30"N
43°0'0"N
42°59'30"N
42°59'0"N
42°58'30"N
42°58'0"N
42°57'30"N

Legend

- Isolated Heat Source
- Heat Perimeter
- Intense Heat
- Scattered Heat



120°49'0"W 120°48'30"W 120°48'0"W 120°47'30"W 120°47'0"W 120°46'30"W 120°46'0"W 120°45'30"W 120°45'0"W 120°44'30"W 120°44'0"W 120°43'30"W