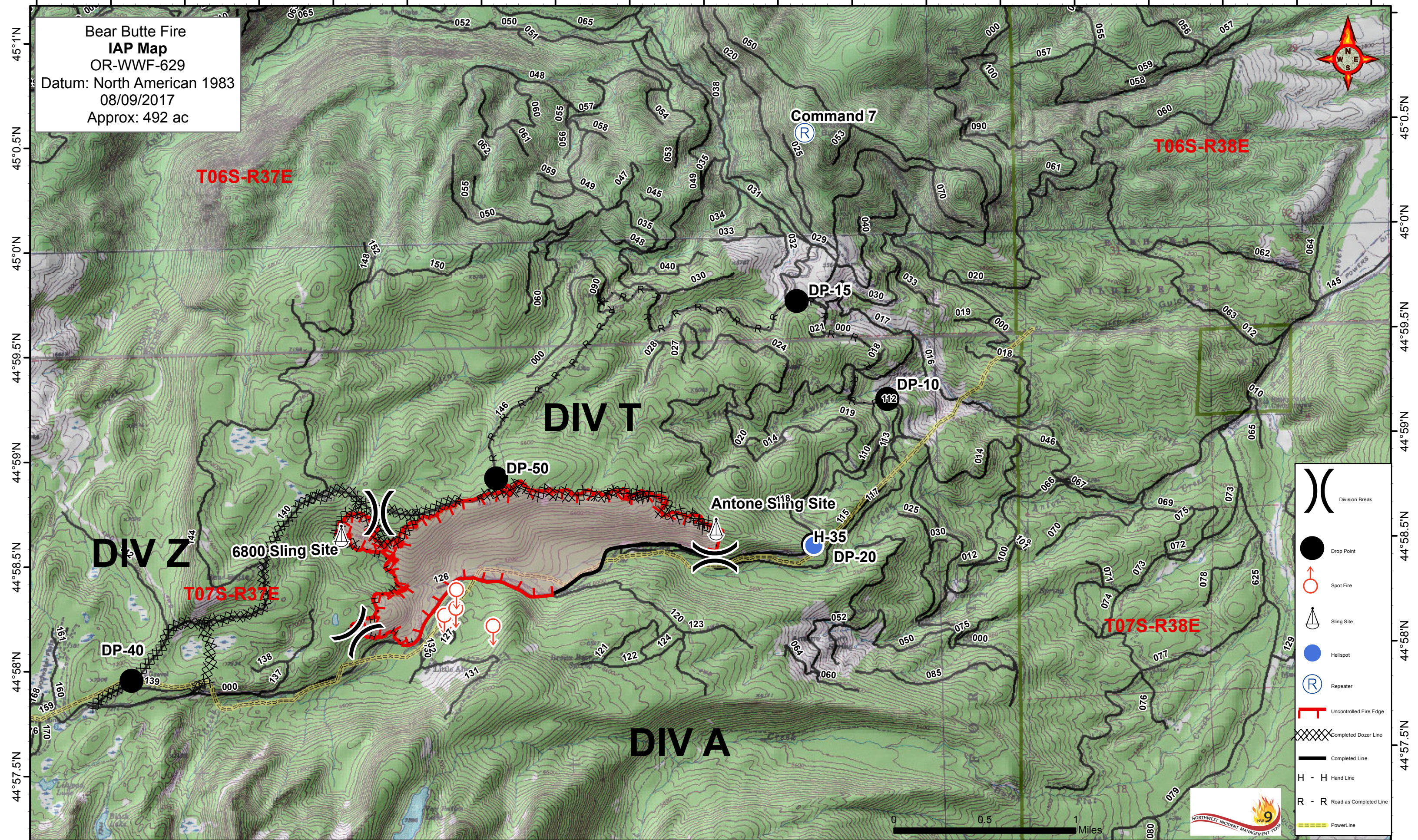


118°13.5'W 118°13'W 118°12.5'W 118°11'W 118°11.5'W 118°10.5'W 118°10'W 118°9.5'W 118°8'W 118°8.5'W 118°8'W 118°7.5'W 118°7'W 118°6.5'W 118°6'W 118°5.5'W 118°5'W 118°4.5'W

Bear Butte Fire  
IAP Map  
OR-WWF-629  
Datum: North American 1983  
08/09/2017  
Approx: 492 ac



T06S-R37E

T06S-R38E

DIV T

DIV Z

T07S-R37E

T07S-R38E

DIV A

- Division Break
- Drop Point
- Spot Fire
- Sling Site
- Helispot
- Repeater
- Uncontrolled Fire Edge
- Completed Dozer Line
- Completed Line
- H - H Hand Line
- R - R Road as Completed Line
- PowerLine

0 0.5 1 Miles



118°13.5'W 118°13'W 118°12.5'W 118°11'W 118°11.5'W 118°10.5'W 118°10'W 118°9.5'W 118°8'W 118°8.5'W 118°8'W 118°7.5'W 118°7'W 118°6.5'W 118°6'W 118°5.5'W 118°5'W 118°4.5'W