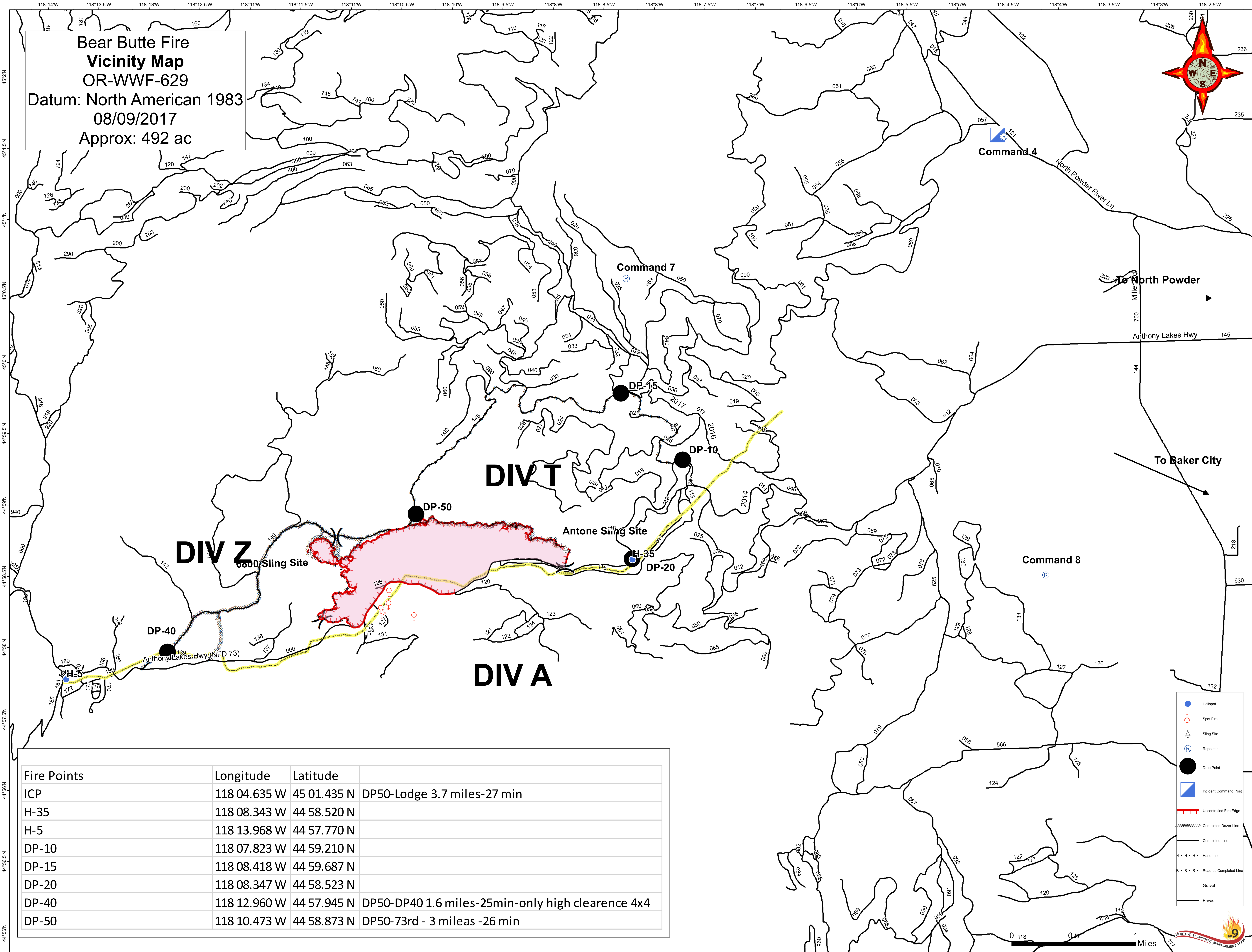
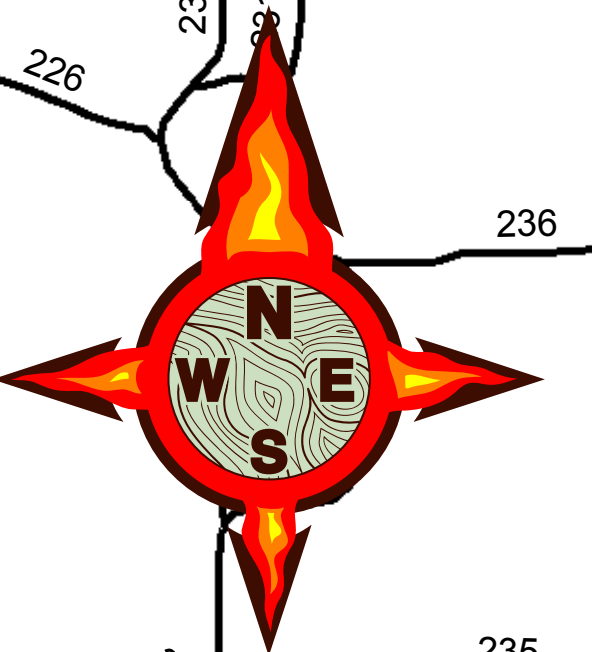


**Bear Butte Fire**  
**Vicinity Map**  
 OR-WWF-629  
 Datum: North American 1983  
 08/09/2017  
 Approx: 492 ac



Fire Points	Longitude	Latitude	
ICP	118 04.635 W	45 01.435 N	DP50-Lodge 3.7 miles-27 min
H-35	118 08.343 W	44 58.520 N	
H-5	118 13.968 W	44 57.770 N	
DP-10	118 07.823 W	44 59.210 N	
DP-15	118 08.418 W	44 59.687 N	
DP-20	118 08.347 W	44 58.523 N	
DP-40	118 12.960 W	44 57.945 N	DP50-DP40 1.6 miles-25min-only high clearance 4x4
DP-50	118 10.473 W	44 58.873 N	DP50-73rd - 3 miles -26 min

- Helispot
- Spot Fire
- Slings Site
- Repeater
- Drop Point
- Incident Command Post
- Uncontrolled Fire Edge
- Completed Dozer Line
- Completed Line
- Hand Line
- Road as Completed Line
- Gravel
- Paved

