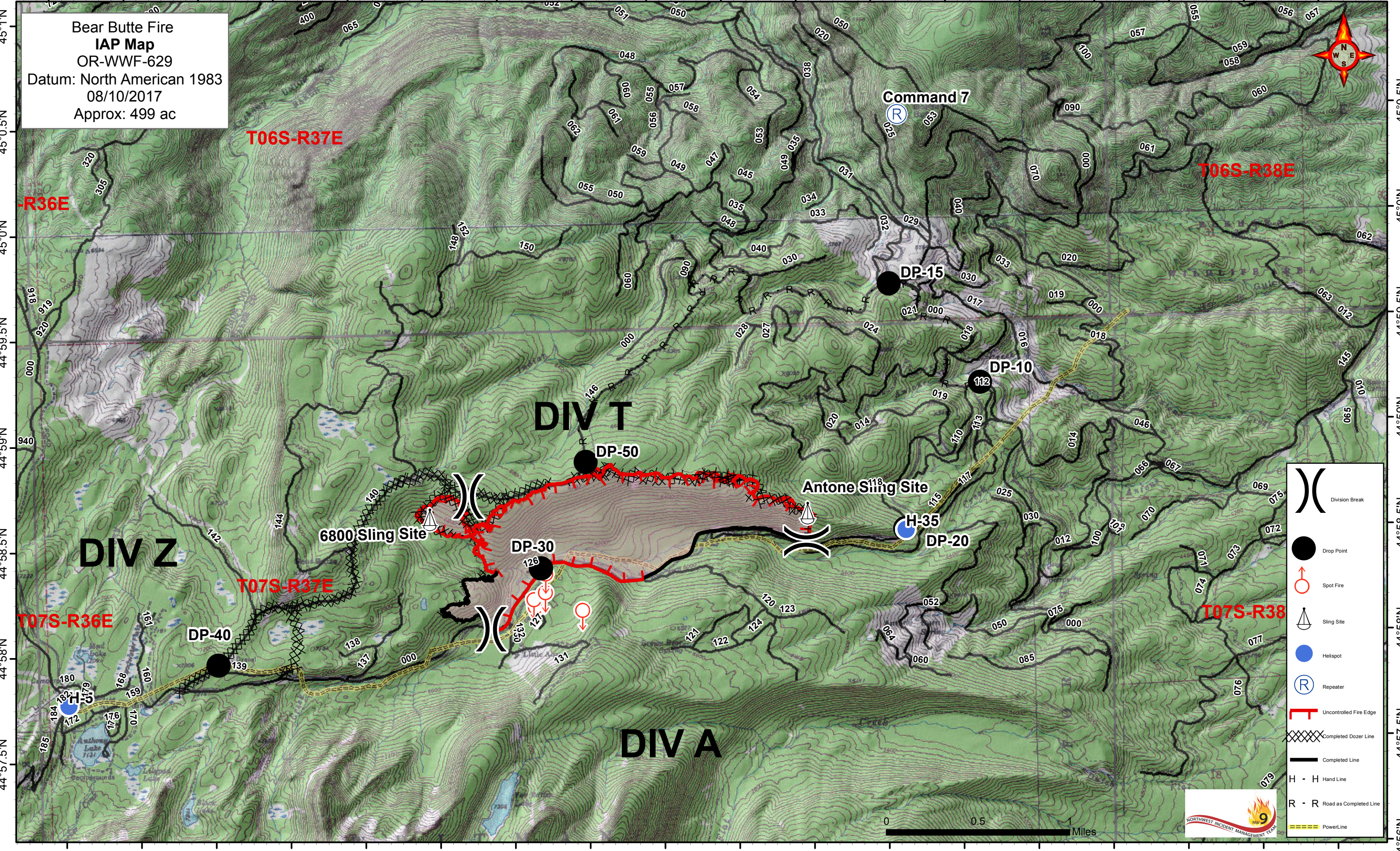


118°14'W 118°13.5'W 118°13'W 118°12.5'W 118°11'W 118°11.5'W 118°11'W 118°10.5'W 118°10'W 118°9.5'W 118°8'W 118°8.5'W 118°8'W 118°7.5'W 118°7'W 118°6.5'W 118°6'W 118°5.5'W

**Bear Butte Fire
IAP Map**
OR-WWF-629
Datum: North American 1983
08/10/2017
Approx: 499 ac



T06S-R37E

T06S-R38E

R36E

DIV T

DIV Z

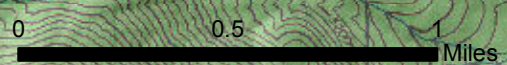
DIV A

T07S-R36E

T07S-R37E

T07S-R38

- Division Break
- Drop Point
- Spot Fire
- Sling Site
- Helispot
- Repeater
- Uncontrolled Fire Edge
- Completed Dozer Line
- Completed Line
- H - H Hand Line
- R - R Road as Completed Line
- Power Line



118°14'W 118°13.5'W 118°13'W 118°12.5'W 118°11'W 118°11.5'W 118°11'W 118°10.5'W 118°10'W 118°9.5'W 118°8'W 118°8.5'W 118°8'W 118°7.5'W 118°7'W 118°6.5'W 118°6'W 118°5.5'W

45°1'N
45°0.5'N
45°0'N
44°59.5'N
44°59'N
44°58.5'N
44°58'N
44°57.5'N
44°57'N
44°56'N

45°1'N
45°0.5'N
45°0'N
44°59.5'N
44°59'N
44°58.5'N
44°58'N
44°57.5'N
44°57'N
44°56'N