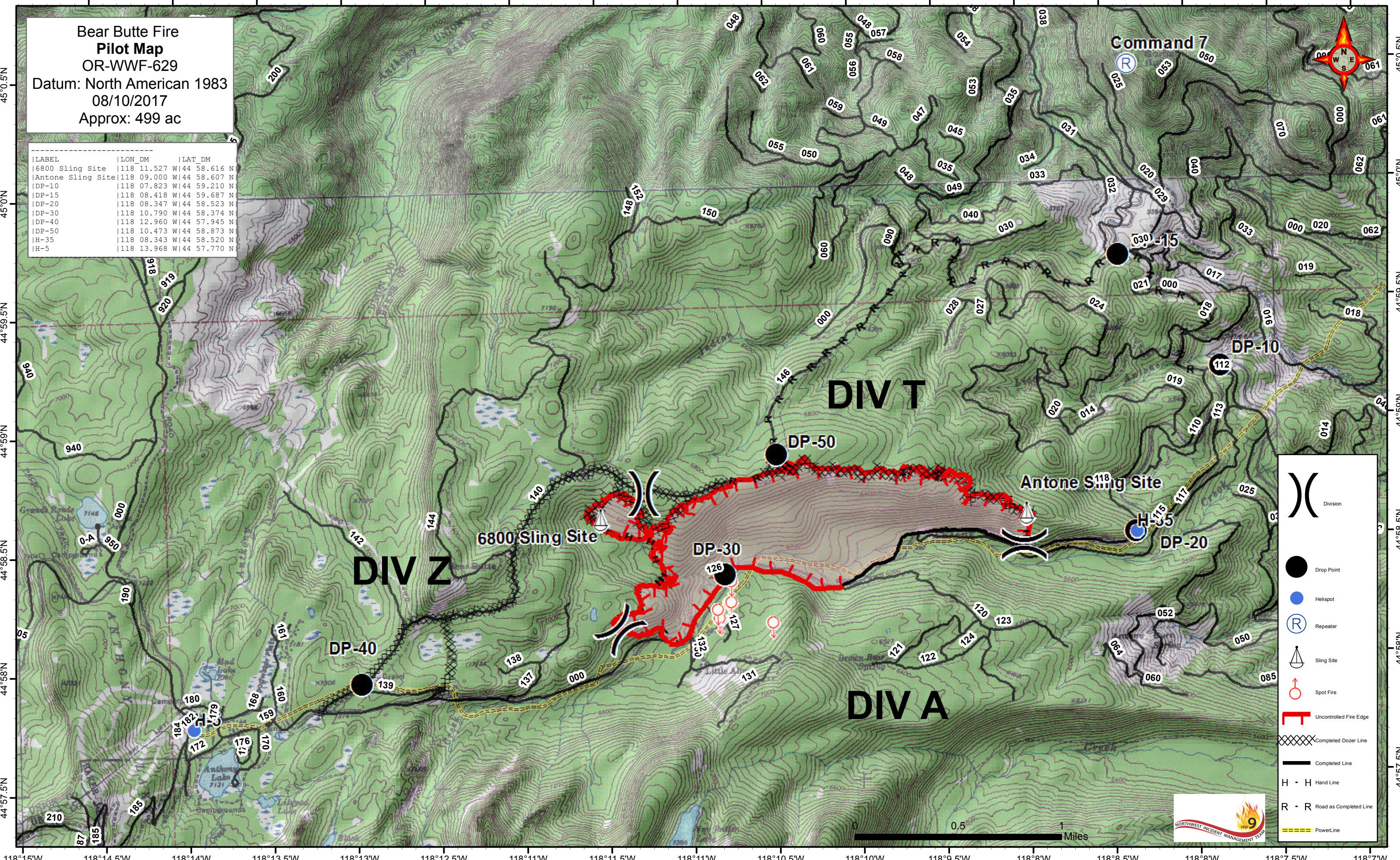


118°14.5'W 118°14'W 118°13.5'W 118°13'W 118°12.5'W 118°11'W 118°11.5'W 118°10.5'W 118°10'W 118°9.5'W 118°8'W 118°8.5'W 118°8'W 118°7.5'W 118°7'W

**Bear Butte Fire
Pilot Map**
OR-WWF-629
Datum: North American 1983
08/10/2017
Approx: 499 ac

| Label | Lon DM | Lat DM |
|-------------------|----------------------------|--------|
| 6800 Sling Site | 118 11.527 W 44 58.616 N | |
| Antone Sling Site | 118 09.000 W 44 58.607 N | |
| DP-10 | 118 07.823 W 44 59.210 N | |
| DP-15 | 118 08.418 W 44 59.687 N | |
| DP-20 | 118 08.347 W 44 58.523 N | |
| DP-30 | 118 10.790 W 44 58.374 N | |
| DP-40 | 118 12.960 W 44 57.945 N | |
| DP-50 | 118 10.473 W 44 58.873 N | |
| H-35 | 118 08.343 W 44 58.520 N | |
| H-5 | 118 13.968 W 44 57.770 N | |



- Division
- Drop Point
- Helispot
- Repeater
- Sling Site
- Spot Fire
- Uncontrolled Fire Edge
- Completed Dozer Line
- Completed Line
- H - H Hand Line
- R - R Road as Completed Line
- PowerLine



118°15'W 118°14.5'W 118°14'W 118°13.5'W 118°13'W 118°12.5'W 118°11'W 118°11.5'W 118°10.5'W 118°10'W 118°9.5'W 118°8'W 118°8.5'W 118°8'W 118°7.5'W 118°7'W