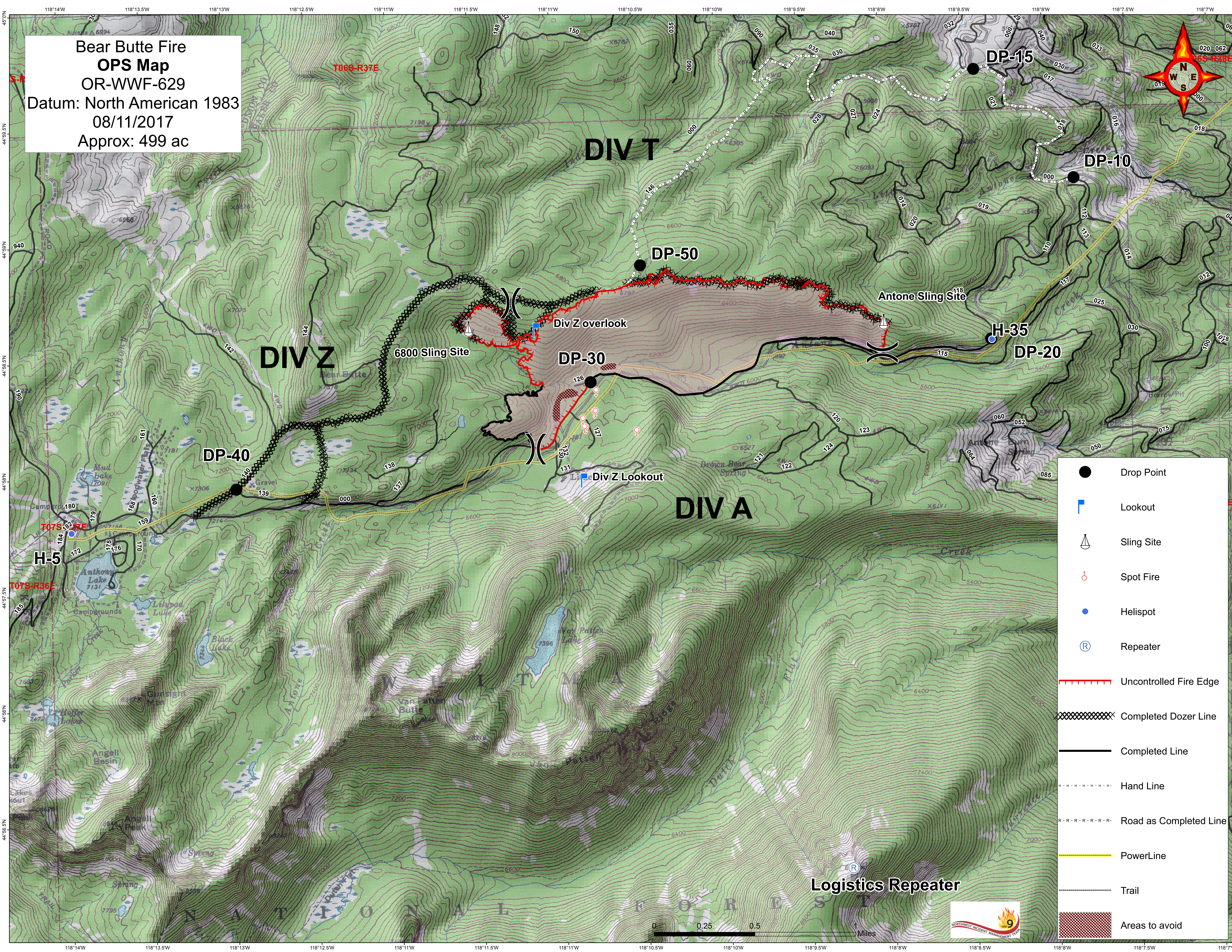
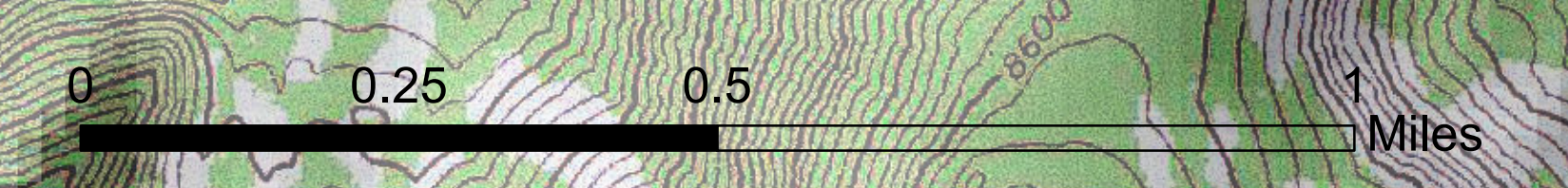


**Bear Butte Fire  
OPS Map**  
OR-WWF-629  
Datum: North American 1983  
08/11/2017  
Approx: 499 ac



- Drop Point
- Lookout
- Sling Site
- Spot Fire
- Helispot
- Repeater
- Uncontrolled Fire Edge
- Completed Dozer Line
- Completed Line
- Hand Line
- Road as Completed Line
- PowerLine
- Trail
- Areas to avoid

Logistics Repeater



Map grid coordinates: 118°14'W to 118°7'W and 44°59'N to 44°56'N.