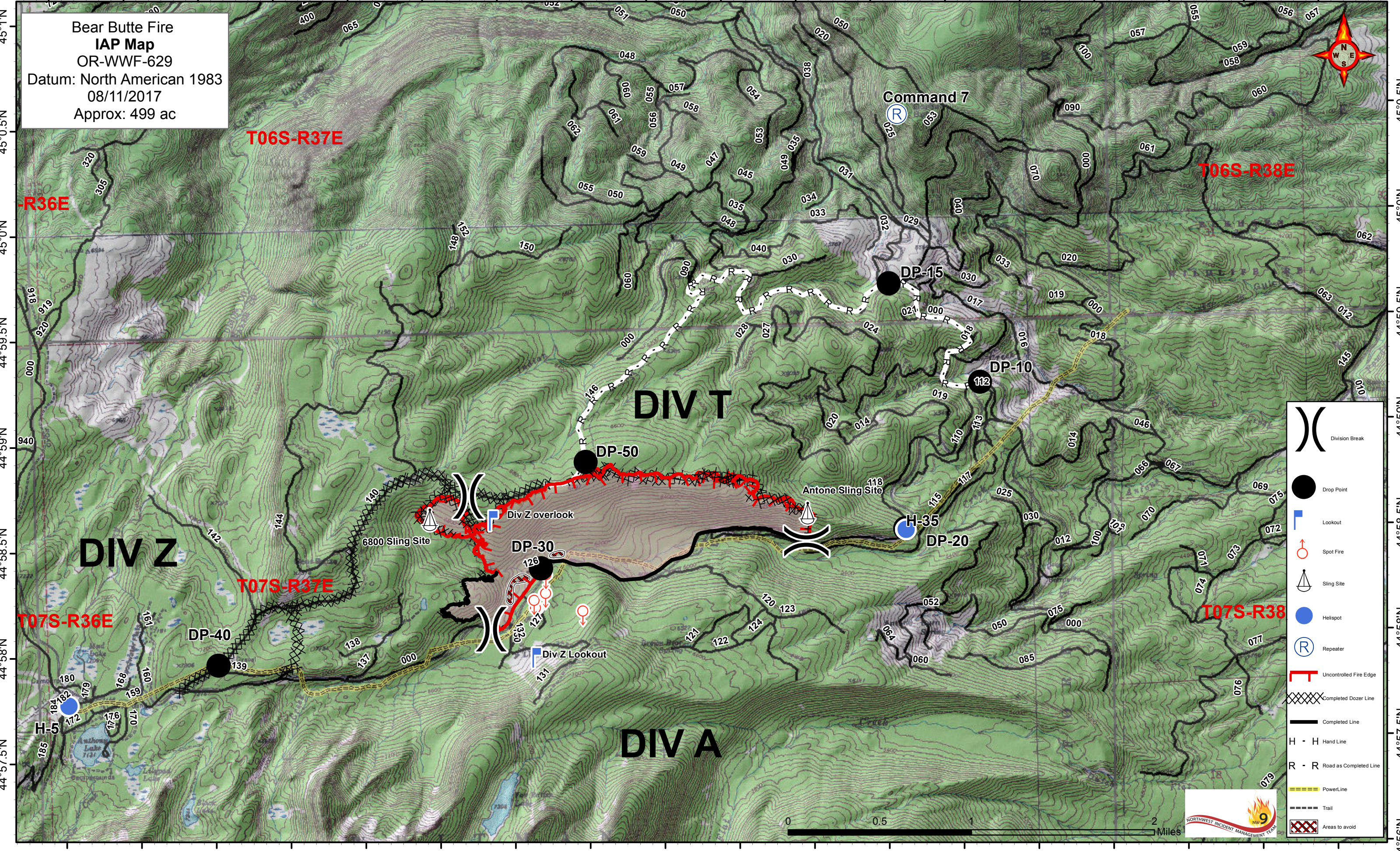


118°14'W 118°13.5'W 118°13'W 118°12.5'W 118°11'W 118°11.5'W 118°11'W 118°10.5'W 118°10'W 118°9.5'W 118°8'W 118°8.5'W 118°8'W 118°7.5'W 118°7'W 118°6.5'W 118°6'W 118°5.5'W

**Bear Butte Fire  
IAP Map**  
OR-WWF-629  
Datum: North American 1983  
08/11/2017  
Approx: 499 ac



T06S-R37E

T06S-R38E

R36E

DIV T

DIV Z

T07S-R36E

T07S-R37E

T07S-R38

DIV A

- Division Break
- Drop Point
- Lookout
- Spot Fire
- Sling Site
- Helispot
- Repeater
- Uncontrolled Fire Edge
- Completed Dozer Line
- Completed Line
- Hand Line
- Road as Completed Line
- Power Line
- Trail
- Areas to Avoid



0 0.5 1 2 Miles

118°14'W 118°13.5'W 118°13'W 118°12.5'W 118°11'W 118°11.5'W 118°11'W 118°10.5'W 118°10'W 118°9.5'W 118°8'W 118°8.5'W 118°8'W 118°7.5'W 118°7'W 118°6.5'W 118°6'W 118°5.5'W

45°1'N  
45°0.5'N  
45°0'N  
44°59.5'N  
44°59'N  
44°58.5'N  
44°58'N  
44°57.5'N  
44°57'N  
44°56'N

45°1'N  
45°0.5'N  
45°0'N  
44°59.5'N  
44°59'N  
44°58.5'N  
44°58'N  
44°57.5'N  
44°57'N  
44°56'N